



## 2 bedroom, 2 bathroom, marina apartment

Castle Quay, La Rue de L'eau, St Helier, Jersey, JE3 3ED

Guide Price £795,000.



**Second floor marina apartment • Large south west facing balcony • available with sitting tenant • great investment •**  
**• 892 sq ft**

**• 2 bedrooms • 2 bathrooms • 2 parking**

**Local Information**

Castle quay is highly regarded as one of the most exclusive addresses for coastal property in Jersey. It is the perfect location from which to enjoy the best of everything Jersey has to offer. From its close proximity to the bustling centre of St Helier, to the magnificent views across the marina to Elizabeth Castle and beyond the golden sands of St Aubin's bay, this waterfront destination offers a fusion of unrivalled lifestyle and leisure opportunities.

**About this property**

Located on the second floor of the award winning Castle Quay development. From the south facing large balcony, the living room and master bedroom you have an excellent view of the marina and Elizabeth Castle. Bright and spacious open plan living at it's best, with a fully equipped kitchen with Miele integrated appliances. There is plenty of storage throughout with both the double bedrooms having fitted wardrobes, there is a separate utility and separate large storage cupboard.

Secure parking for 2 cars.

**Tenure**

Share of transfer

**Service Charge**

£376 pm (approx.)

**Viewing**

All viewings will be accompanied and are strictly by prior arrangement through Savills Jersey Office.  
Telephone: 01534 722 227.







Apartment Type 37

Dimensions

kitchen/dining/lounge

19' 8" (6m) x 29' 2" (8.9m)

bedroom 1

18' 8" (5.7m) x 11' 2" (3.4m)

bedroom 2

11' 6" (3.5m) x 11' 10" (3.6m)

bathroom 1

7' 3" (2.2m) x 5' 7" (1.7m)

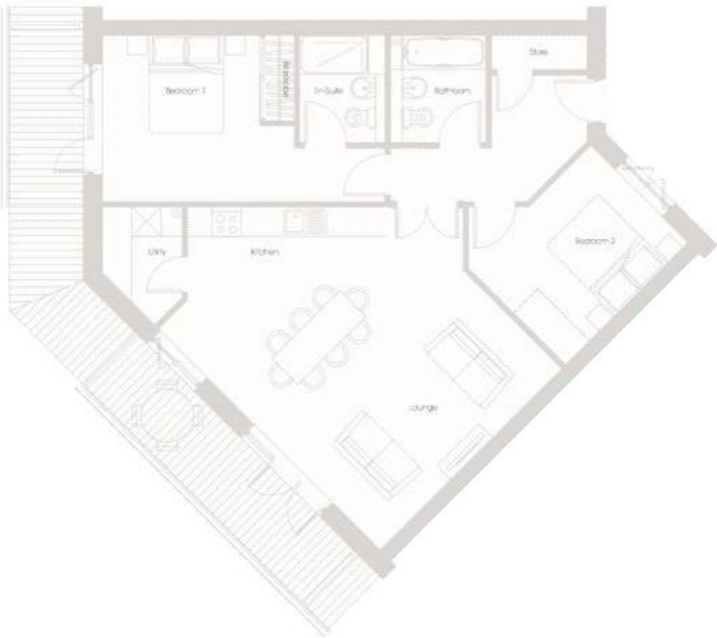
bathroom 2

7' 3" (2.2m) x 6' 3" (1.9m)



Apartment location

second floor	237
third floor	337
fourth floor	435
fifth floor	535



2 Bedroom Apartment

apartment area: 892ft<sup>2</sup> 82.9m<sup>2</sup>



**Important notice** Savills, its clients and any joint agents give notice that 1: They are not authorised to make or give any representations or warranties in relation to the property either here or elsewhere, either on their own behalf or on behalf of their client or otherwise. They assume no responsibility for any statement that may be made in these particulars. These particulars do not form part of any offer or contract and must not be relied upon as statements or representations of fact. 2: Any areas, measurements or distances are approximate. The text, photographs and plans are for guidance only and are not necessarily comprehensive. It should not be assumed that the property has all necessary planning, building regulation or other consents and Savills have not tested any services, equipment or facilities. Purchasers must satisfy themselves by inspection or otherwise.

