



METICULOUSLY MAINTAINED, GRACIOUS LIVING IN THIS BEAUTIFUL ESTATE

LES SILLERIES

LA RUE AU BLANCQ, GROUVILLE, JERSEY, JE3 9QS

Guide Price £13,000,000

savills

SCULPTURED SHRUBBERY & MANICURED LAWNS

Ref No: JES110008 • Elegant residence with privacy and sea views • Built to a very high standard by the current owners • 4 Reception rooms • 8 bedroom suites • Leisure Complex • Approx 15,251 sq ft • 11 acres of land • Qualified

Situation

Located in the parish of Grouville, Les Silleries is ideal for families looking for security and privacy and there are several excellent schools nearby, such as St Michael's Preparatory School, Victoria College Preparatory School, Jersey College for Girls, Beaulieu Convent School for Girls and Victoria College for Boys. The property benefits from easy access to all main forms of communication and activities island wide: Golf - At The Royal Jersey Golf Club, and La Moye Golf club.

Travel - Corporate and General Aviation at Aviation Beauport, Jersey Aero Club and Proair.

Jersey Airport provides extensive coverage of most UK destinations, and also offers direct flights to some of Europe's major cities and holiday resorts.

Condor Ferries for travel to the UK, Channel Islands or France.

Sailing - Jersey offers 1,000 berths across five gold anchor marinas, all of which are close to a vibrant waterfront and the town centre of St Helier. The St. Helier Yacht Club has over 3,500 current members - which makes it one of the largest yacht clubs in British waters - the Jersey clubhouse is always a hive of activity.

Horse Racing at Les Landes-Jersey Race Club.

Fine Dining - Jersey has a plethora of fantastic award winning restaurants catering for all tastes and palates.







Description

A Jersey 'eco' estate, sitting perfectly within its own land. Constructed in the early 1990's the magnificent Les Silleries is one of Jersey's finest houses providing luxurious family accommodation with 11 acres of mature parkland gardens and woodland.

Completely private, Les Silleries is approached through electric gates and along an impressive drive flanked by an avenue of beech hedges, cutting through formal lawns. The property is graced with extensive gardens, several large sun terraces and striking balconies from which to enjoy the views towards the Royal Bay of Grouville.

On entering the house there is an exceptional reception hall with access to the principal reception rooms, which occupy the majority of the southern and main elevation of the house. Sitting centrally within its own land the principal house exudes classical architecture and includes 4 reception rooms, 7 superb bedroom suites, an exceptionally large family kitchen, catering kitchen, conservatory, a magnificent indoor swimming pool complex, executive office suite with board room, billiards room and integral large guest apartment. The house combines a beautiful and timeless setting, classical architecture and state of the art technology making it an eco-friendly and sustainable place to live.

Services

Internal swimming pool with manual disinfection system and sand filtration. Heat recovery ventilation system with reverse cycle heat pump.

Traditional radiators zoned into three circuits to suit occupancy utilising LTHW generated in oil fired boilers. DHWS generated in indirect water cylinder.

Distribution pipework run under the screed in purpose formed accessible ducts.

Remote access Building Management System.

External Building floodlighting. Intelligent security lockdown system on 18 external doors.

Driveway/gate CCTV.

Garden Irrigation system.

Viewing

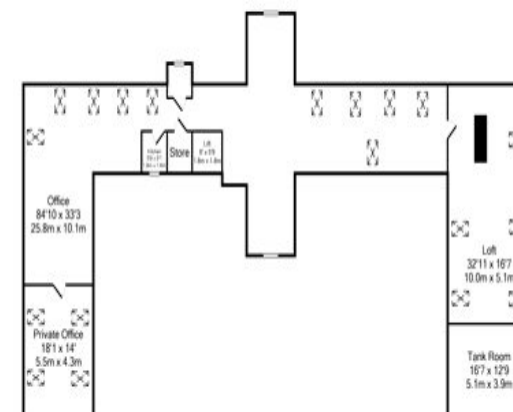
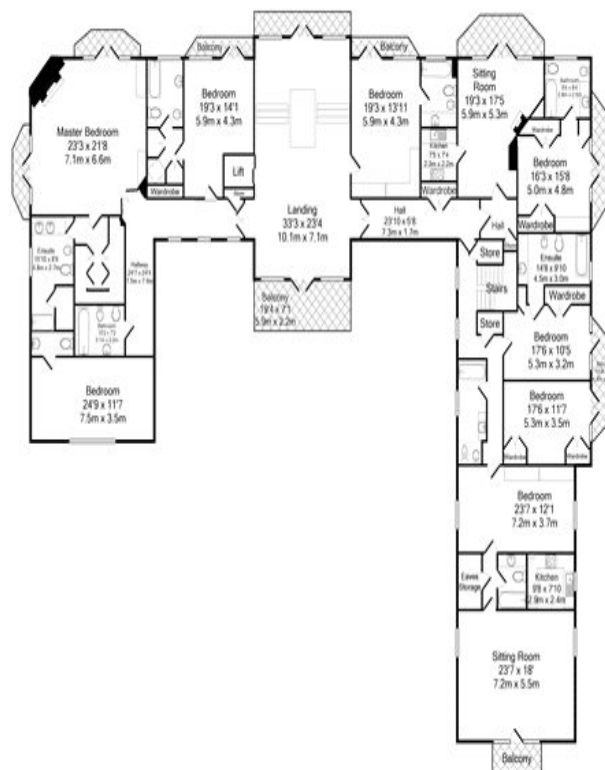
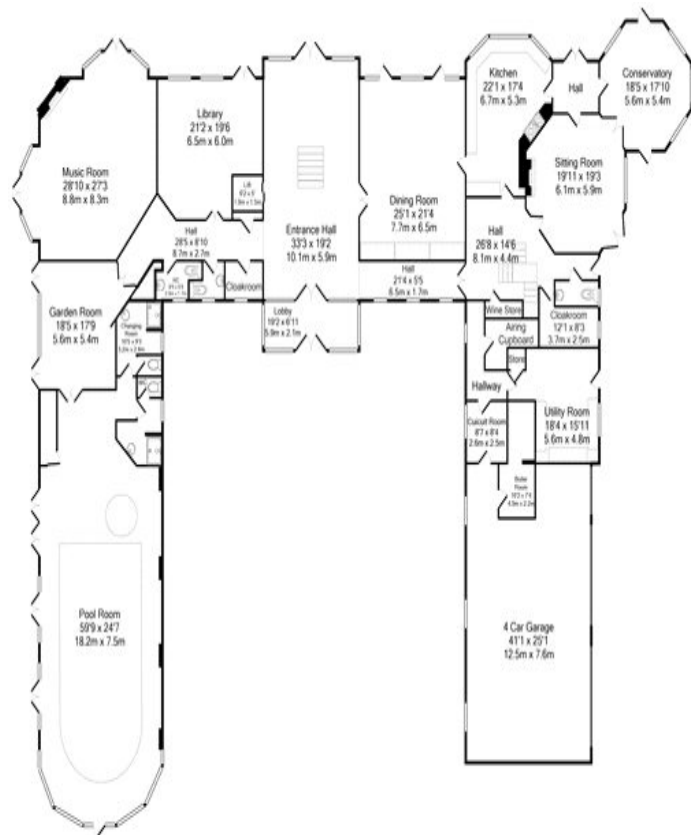
Strictly by appointment with Savills.

Savills Jersey

+44 (0) 1534 722 227

savills.je

Important notice: Savills, their clients and any joint agents give notice that: 1: They are not authorised to make or give any representations or warranties in relation to the property either here or elsewhere, either on their own behalf or on behalf of their client or otherwise. They assume no responsibility for any statement that may be made in these particulars. These particulars do not form part of any offer or contract and must not be relied upon as statements or representations of fact. 2: Any areas, measurements or distances are approximate. The text, photographs and plans are for guidance only and are not necessarily comprehensive. It should not be assumed that the property has all necessary planning, building regulation or other consents and Savills have not tested any services, equipment or facilities. Purchasers must satisfy themselves by inspection or otherwise.



Total Approx. Floor Area 15251 Sq.Ft. (1416.8 Sq.M.)
Made with Meridian 02015