



**AN OUTSTANDING VICTORIAN HOME SYMPATHETICALLY RESTORED TO A
HIGH STANDARD**

FAIRLAWN

BAGATELLE ROAD, ST. SAVIOUR, JERSEY, CHANNEL ISLES, JE2 7TA

Guide Price £1,750,000 - Freehold



BEAUTIFUL PERIOD PROPERTY WITH LOTS OF CHARACTER AND SOUTH FACING GARDENS

Magnificent Victorian home • Many original features • Safe enclosed garden with pool and pool house • Excellent secondary accommodation • Perfect for principle schools

Local Information

This elegant home is situated north of the town in St Saviour, with agricultural land to the south and east. St Helier and its centre are within walking distance and the property is ideally situated for all of the island's principle schools. There are local shops just 1/4 mile away at Five Oaks.

Description

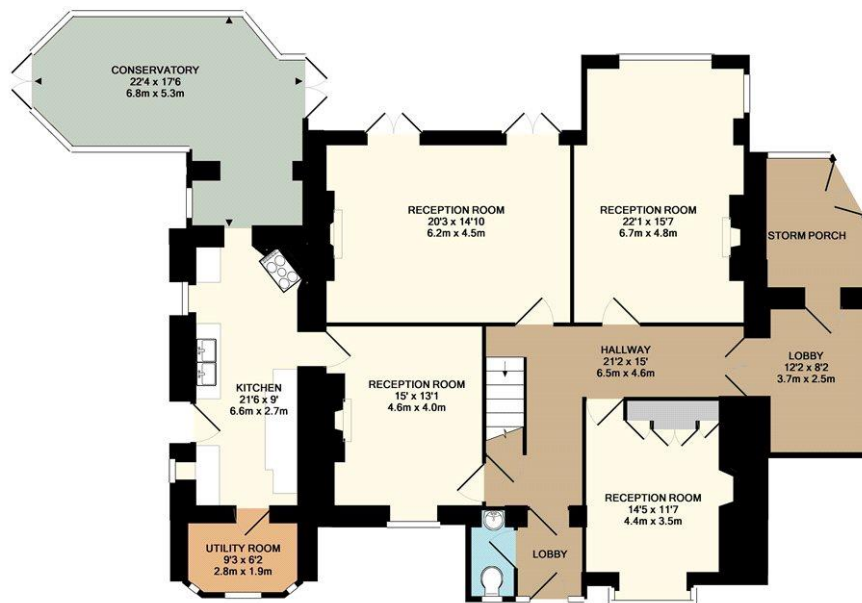
An impressive Victorian residence dating back to circa 1880 set in its own south facing grounds with driveway approach.

The property has been the subject of much renovation in sympathy with the original character and design of the property and provides a 'grand' home of substantial proportions for the growing family and entertaining.

There are wonderful high ceilings, large windows (some original leaded), mahogany banister, mosaic tiled entrance porches, dado and picture rails and a charming Victorian veranda overlooking the south lawns, perfect for croquet.

In addition to the 5 reception rooms, 4 bedrooms and 2 bathrooms, there is a separate outdoor pool complex, recently built, in keeping and providing a luxury entertainment space with lounge, kitchen, real fire, flat screen TV and gym/study area. There is a separate coach house apartment, double garage and ample parking. Located on high ground within easy driving distance to main schools and St Helier.





FAIRLAWN
TOTAL APPROX. FLOOR AREA 3400 SQ.FT. (315.9 SQ.M.)

Whilst every attempt has been made to ensure the accuracy of the floor plan contained here, all measurements are approximate and no responsibility is taken for any errors. You may not make a permanent copy of or reproduce this floor plan in any form as the intellectual rights belong to Jersey Floor Plans.
Made with Metropix ©2011





Viewing

Strictly by appointment with Savills.

Savills Jersey

+44 (0) 1534 722 227

savills.je

Important notice: Savills, their clients and any joint agents give notice that: 1: They are not authorised to make or give any representations or warranties in relation to the property either here or elsewhere, either on their own behalf or on behalf of their client or otherwise. They assume no responsibility for any statement that may be made in these particulars. These particulars do not form part of any offer or contract and must not be relied upon as statements or representations of fact. 2: Any areas, measurements or distances are approximate. The text, photographs and plans are for guidance only and are not necessarily comprehensive. It should not be assumed that the property has all necessary planning, building regulation or other consents and Savills have not tested any services, equipment or facilities. Purchasers must satisfy themselves by inspection or otherwise.