



Spacious and modern one bedroom apartment in excellent condition

Matthias Apartments, 158 Northchurch Road, London, N1

£475,000 Leasehold



One reception room • One bedroom • One bathroom •
Generous proportions • Good condition • Secure gated
development • Excellent transport links • Private balcony

Local Information

Matthias apartment is well located for local food shopping with both Tesco and Sainsburys local shops opposite. Upper Street and the Angel centre are nearby offering a wonderful selection of shops, restaurants and bars. Transport facilities are excellent - there are numerous bus routes on Essex Road giving access to the City and the West End. The overground at Essex Road plus the Victoria line at Highbury & Islington are both nearby.

About this property

A large one bedroom apartment with a private balcony set within a small secure modern development of only twelve apartments in a sought after Islington location. The property is in excellent condition throughout and offers a spacious open plan kitchen with fully integrated appliances, reception room with wooden flooring leading to the balcony, an excellent sized double bedroom and modern bathroom. There is a very attractive courtyard garden as you enter the development and an excellent bike and storage area on the ground floor.

These images were taken in June 2019

Tenure
Leasehold

Local Authority
Islington

Energy Performance
EPC Rating = D

Viewing
All viewings will be accompanied and are strictly by prior arrangement through Savills Islington Office.
Telephone: +44 (0) 207 226 1313.



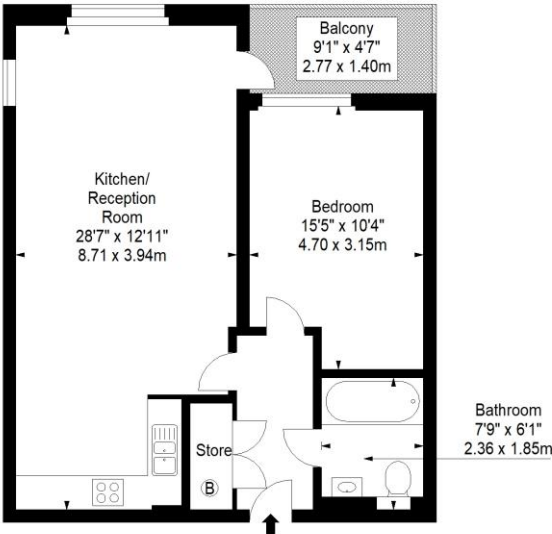


Matthias Apartments, 158 Northchurch Road, London, N1
Gross Internal Area 630 sq ft, 58.5 m²

James Davidson
Islington
+44 (0) 207 226 1313
james.davidson@savills.com

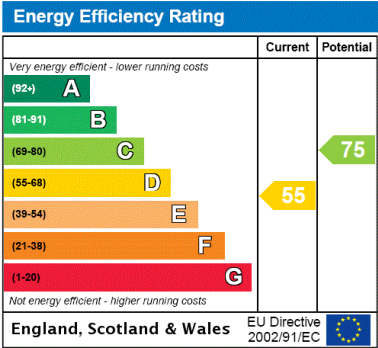
 OnTheMarket.com |  savills | savills.co.uk

Matthias Apartments,
Northchurch Road, N1
Approx. Gross Internal Area *
630 Ft² - 58.53 M²



First Floor

Every attempt has been made to ensure the accuracy of this floor plan
however, measurements are approximate and for illustration purposes only.
Measured in accordance with the RICS code of measuring practice. Not to scale
© Inside Photography Ltd.
Tel 07850 620 122 , 0207 263 2188
www.ipinteriors.co.uk



Important Notice Savills, its clients and any joint agents give notice that 1: They are not authorised to make or give any representations or warranties in relation to the property either here or elsewhere, either on their own behalf or on behalf of their client or otherwise. They assume no responsibility for any statement that may be made in these particulars. These particulars do not form part of any offer or contract and must not be relied upon as statements or representations of fact. 2: Any areas, measurements or distances are approximate. The text, photographs and plans are for guidance only and are not necessarily comprehensive. It should not be assumed that the property has all necessary planning, building regulation or other consents and Savills have not tested any services, equipment or facilities. Purchasers must satisfy themselves by inspection or otherwise. 20200825EMNO

