



Fantastic opportunity to purchase an off-plan two bedroom flat which is well positioned within a brand new development completing in 2020

City North East Tower, 3 City North Place, London, N4

£650,000 Leasehold



Reception/Kitchen/Dining • 2 double bedrooms • En suite shower room • Bathroom • Two balconies • Completion estimated for March – July 2020 • Dual aspect over Finsbury Park and Alexandra Palace • High quality fixtures and fittings • Excellent transport links

Local Information

City North has been purposefully designed and built around one of London's most central transport hubs – Finsbury Park Tube Station. Finsbury Park underground and mainland station entrance and exit in the heart of development. There are also many extensive bus connections nearby.

About this property

We are delighted to offer a great opportunity to purchase a contract re-assignment in The City North East Tower of the hotly anticipated City North Islington development at Finsbury Park. City North is set across four sleek and stylish buildings including two awe-inspiring towers situated above Finsbury Park Underground Station.

We offer a contract re-assignment for a two bedroom flat set on the 5th floor of The City North East Tower. The apartment will be dual aspect with one aspect looking towards Finsbury Park and towards Stratford. The other aspect will be looking towards Alexandra Palace and Hampstead. There are two separate balconies, one on each aspect.

It will be 883 sq ft and will have two bedrooms, one with an en suite shower room.

The kitchen and reception will be open plan and will be well-appointed with high quality fixtures and fittings. There will also be a sleek and modern bathroom also with high quality fittings.

Residents will have access to communal roof terraces and a wifi lounge providing free wifi. There will also be a new Cineworld cinema, Marks and Spencer supermarket and a Gymbox fitness centre built on site.

This is a fantastic opportunity to purchase the contract for this apartment with completion anticipated for March – July 2020. Therefore, this apartment should appeal to those looking for a property to move into as well as investors.

Indicative images only.

Tenure

999 year leasehold

Viewing

All viewings will be accompanied and are strictly by prior arrangement through Savills Islington Office. Telephone: +44 (0) 207 226 1313.





City North East Tower, 3 City North Place, London, N4
Gross Internal Area 883 sq ft, 82 m²

James Davidson
Islington
+44 (0) 207 226 1313
james.davidson@savills.com

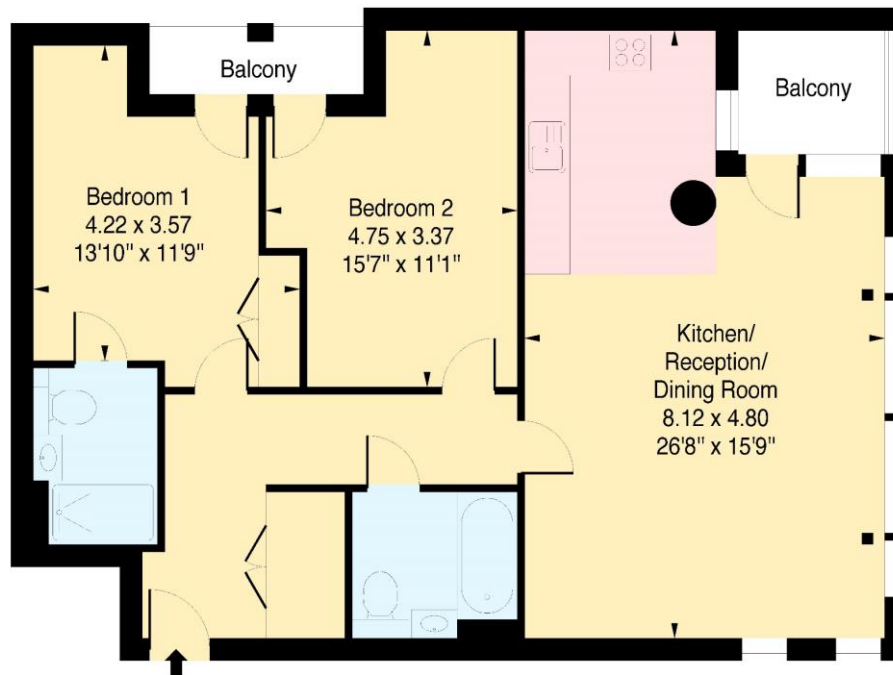


savills

savills.co.uk

City North, East Tower N4

Approximate Gross Internal Area = 883 sq ft / 82.03 sqm



Fifth Floor

Measured in accordance with RICS guidelines.
This floor plan is for illustrative purposes only
and must not be relied upon as a statement of fact.

© ollyhewitt.co.uk

Important notice Savills, its clients and any joint agents give notice that 1: They are not authorised to make or give any representations or warranties in relation to the property either here or elsewhere, either on their own behalf or on behalf of their client or otherwise. They assume no responsibility for any statement that may be made in these particulars. These particulars do not form part of any offer or contract and must not be relied upon as statements or representations of fact. 2: Any areas, measurements or distances are approximate. The text, photographs and plans are for guidance only and are not necessarily comprehensive. It should not be assumed that the property has all necessary planning, building regulation or other consents and Savills have not tested any services, equipment or facilities. Purchasers must satisfy themselves by inspection or otherwise. 20191219EMNO

