



A substantial three double bedroom upper maisonette with stunning roof terrace

**Gloucester Drive, London, N4**

£800,000 Leasehold



Three bedrooms • Reception with open plan kitchen • Two bathrooms (one en-suite) • Roof terrace • Over two levels • Good natural light • Renowned local parks and open spaces • Eaves storage • Excellent transport links

### Local Information

Finsbury Park is the closest Underground station providing excellent transport links to the City, Kings Cross and West End with the Victoria and Piccadilly lines and the Overground, which goes directly to Moorgate and Old Street. There are also great bus links Angel and Upper Street. The renowned open spaces of Clissold Park are only a walk away and the renowned Woodberry Wetlands Nature Reserve is only 0.54 miles away.

### About this property

A fantastic three double bedroom maisonette with a large private roof terrace set over the top two floors of this handsome Victorian house set in a residential street of similar properties.

The property is presented in good condition with two bathrooms (one en suite) and has a spacious open plan reception room with room for a large dining table making it ideal for entertaining.

### Tenure

Leasehold

### Viewing

All viewings will be accompanied and are strictly by prior arrangement through Savills Islington Office.

Telephone: +44 (0) 207 226 1313.







Gloucester Drive, London, N4  
Gross Internal Area 1323 sq ft, 122.91m<sup>2</sup>

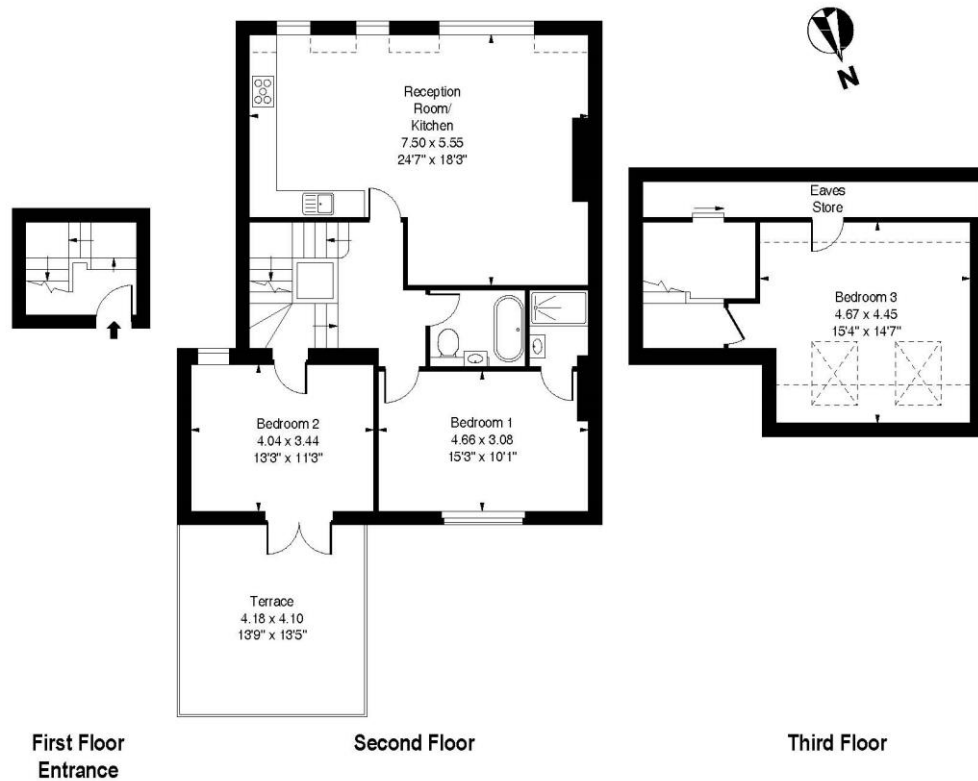
David Gwinnutt  
Islington  
+44 (0) 207 226 1313  
david.gwinnutt@savills.com



savills

savills.co.uk

Gloucester Drive, N4  
Approximate Gross Internal Area = 1323 sq ft / 122.91 sqm  
(Including Eaves Store)



Measured in accordance with RICS guidelines.  
This floor plan is for illustrative purposes only  
and must not be relied upon as a statement of fact.  
© ollyhewitt.co.uk

**Important notice** Savills, its clients and any joint agents give notice that 1: They are not authorised to make or give any representations or warranties in relation to the property either here or elsewhere, either on their own behalf or on behalf of their client or otherwise. They assume no responsibility for any statement that may be made in these particulars. These particulars do not form part of any offer or contract and must not be relied upon as statements or representations of fact. 2: Any areas, measurements or distances are approximate. The text, photographs and plans are for guidance only and are not necessarily comprehensive. It should not be assumed that the property has all necessary planning, building regulation or other consents and Savills have not tested any services, equipment or facilities. Purchasers must satisfy themselves by inspection or otherwise. 20200106EMNO

