



WONDERFULLY BRIGHT TWO BEDROOM APARTMENT IN Highbury

DRAYTON PARK, Highbury, London, N5 1NF

Guide Price £550,000 - Leasehold



THIS PROPERTY HAS TWO BATHROOMS, HIGH CEILINGS AND EXCELLENT TRANSPORT LINKS.

DRAYTON PARK, Highbury, London,

Guide Price £550,000 - Leasehold

Kitchen/reception room • 2 double bedrooms • en suite shower room • bathroom • off street parking • large communal roof terrace • long leasehold (979 years remaining) • high ceilings • good natural light • concierge

Location

Overlooking Aubert Park the apartment benefits from short walking distances of both Arsenal Underground Station and Drayton Park Station while being conveniently located to local amenities and restaurants of Highbury Barn and Upper Street.

Description

Set on the first floor in a secure modern development this spacious apartment has been finished to a good standard throughout. Accommodation includes two large double bedrooms, one with accompanying master en suite bathroom, a separate family bathroom and spacious open-plan kitchen/reception room. With wood floors throughout and having been neutrally decorated the apartment feels bright and airy throughout.

Energy Performance

A copy of the full Energy Performance Certificate is available on request.

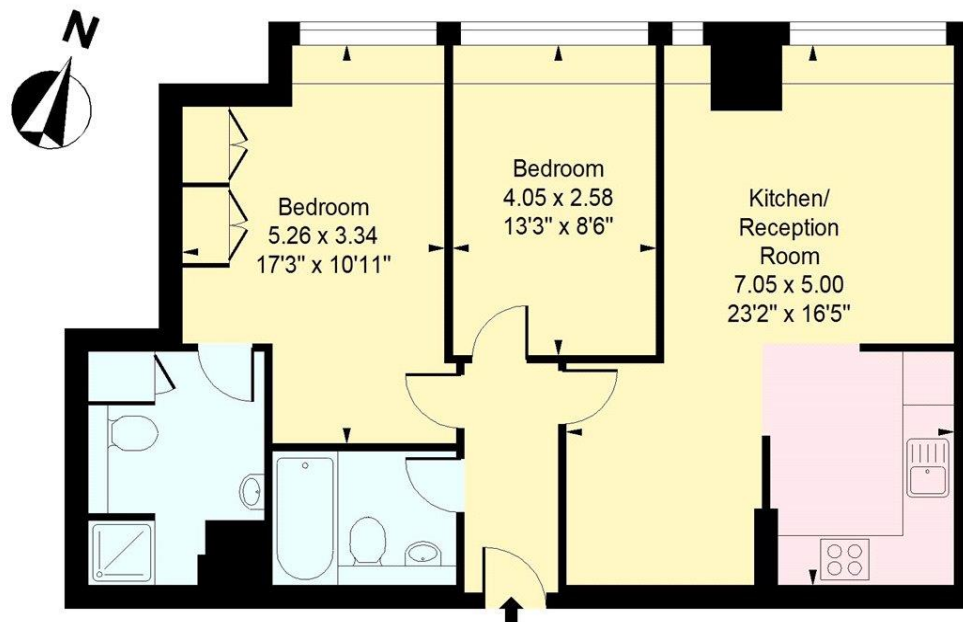
Viewing

Strictly by appointment with Savills.



Drayton Park, N5

Approximate Gross Internal Area = 776 sq ft / 72.09 sqm



First Floor

Measured in accordance with RICS guidelines.
This floor plan is for illustrative purposes only
and must not be relied upon as a statement of fact.
© ollyhewitt.co.uk





Islington
James Davidson
james.davidson@savills.com
+44 (0) 207 226 1313

savills.co.uk

Important notice: Savills, their clients and any joint agents give notice that:
1: They are not authorised to make or give any representations or warranties in relation to the property either here or elsewhere, either on their own behalf or on behalf of their client or otherwise. They assume no responsibility for any statement that may be made in these particulars. These particulars do not form part of any offer or contract and must not be relied upon as statements or representations of fact. 2: Any areas, measurements or distances are approximate. The text, photographs and plans are for guidance only and are not necessarily comprehensive. It should not be assumed that the property has all necessary planning, building regulation or other consents and Savills have not tested any services, equipment or facilities. Purchasers must satisfy themselves by inspection or otherwise. 20190613EMNO