



Elegant family home in the heart of Islington.

Theberton Street, London, N1

£2,500,000 Freehold



Double reception room • Kitchen/dining room • 3 double bedrooms • Bathroom • Downstairs cloakroom • Tiered garden • Grade II listed • Central Islington location • Fabulously proportioned rooms • Barnsbury Conservation Area • No onward chain

Local Information

Theberton Street makes up part of the Barnsbury Conservation Area and is a most central Islington location. Well placed for the excellent transport links at both Angel (buses and Northern Line) and Highbury Corner (Victoria Line, National Rail, London Overground and buses) collectively providing easy access to the City, West End and beyond.

About this property

This handsome Grade II listed home sits in one of Islington's most popular streets.

The house is arranged over four floors, has fabulously proportioned rooms and was completely refurbished by the current owners, retaining many period features including fireplaces and pretty corning.

Across the garden level is a large open plan kitchen and dining room, South facing at the front with plenty of light coming in, with double doors to the rear leading to a 46' landscaped and decked garden. To the front are two storage vaults, one of which has been cleverly converted and excavated to incorporate a bathroom.

Over the ground floor is a large double reception, again this an elegant and bright room. There are three double bedrooms and two bathrooms over the top two floors, of note is the master bedroom on the first floor with floor to ceiling windows and Juliet balconies.

Importantly, the property is offered chain free and is ready for immediate occupation.

Tenure

Freehold

Viewing

All viewings will be accompanied and are strictly by prior arrangement through Savills Islington Office.
Telephone: +44 (0) 207 226 1313.





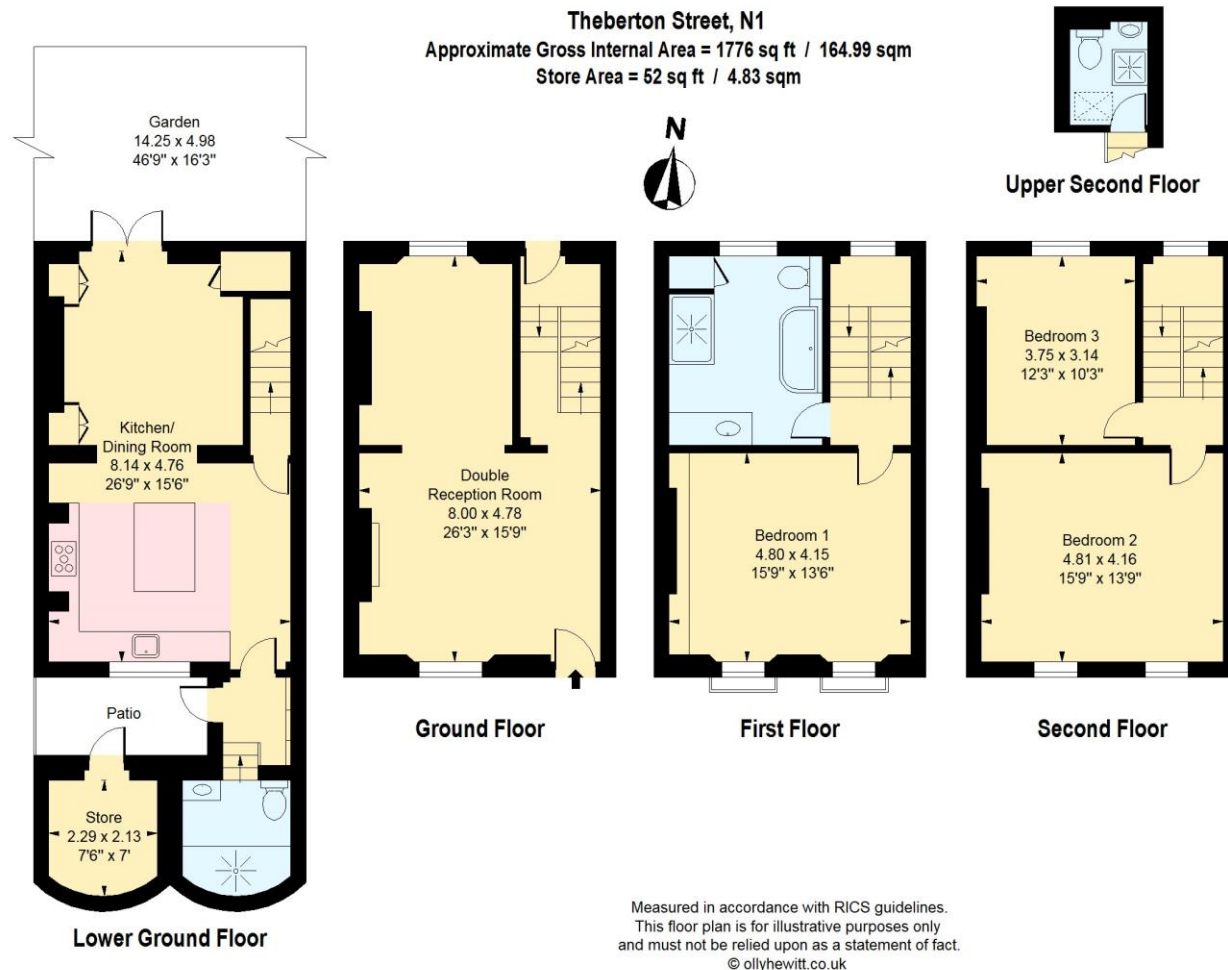
Theberton Street, London, N1
Gross Internal Area 1776 sq ft, 165 m²

Adam Smith
Islington
+44 (0) 207 226 1313
arsmith@savills.com



savills

savills.co.uk



Important notice Savills, its clients and any joint agents give notice that 1: They are not authorised to make or give any representations or warranties in relation to the property either here or elsewhere, either on their own behalf or on behalf of their client or otherwise. They assume no responsibility for any statement that may be made in these particulars. These particulars do not form part of any offer or contract and must not be relied upon as statements or representations of fact. 2: Any areas, measurements or distances are approximate. The text, photographs and plans are for guidance only and are not necessarily comprehensive. It should not be assumed that the property has all necessary planning, building regulation or other consents and Savills have not tested any services, equipment or facilities. Purchasers must satisfy themselves by inspection or otherwise. 20200313EMNO

