



FANTASTIC OPPORTUNITY TO PURCHASE AN OFF-PLAN ONE BEDROOM FLAT WHICH IS WELL POSITIONED WITHIN A BRAND NEW DEVELOPMENT CLOSE TO COMPLETION.

CARRIAGE HOUSE
10 CITY NORTH PLACE, N4

Offers in Excess of £425,000, Leasehold

savills

EXTREMELY COMPETITELY PRICED UNIT.

**IN CLOSE PROXIMITY TO FINSBURY PARK STATION
OPPORTUNITY BUT OVERLOOKING A QUIET
RESIDENTIAL STREET, THIS PROPERTY OFFERS
MODERN AND TRANQUIL LIVING WITH FANTASTIC
PROPERTY LINKS.**

Kitchen/living/dining room • bedroom • bathroom
• balcony • concierge • residents lounge •
communal roof gardens • Completion predicted
for September 2019 • Brand new lease •
Fantastic local amenities • High quality fixtures
and fittings • Excellent transport links

Location

- Finsbury Park underground and mainland station entrance and exit in the heart of development
- Piccadilly and Victoria Line, Zone 2
- Express train to Kings Cross and Moorgate via First Capital Connect
- Extensive bus connections
- Walking distance to major landmarks
- Just over 2 hours to Paris via Eurostar™
- Ultimate commuter convenience

Description

We are delighted to offer a great opportunity to purchase a contract re-assignment in The Linear Building of the hotly anticipated City North Islington development at Finsbury Park. City North is set across four sleek and stylish buildings including two awe-inspiring towers just moments from Finsbury Park Station.



We offer a contract re-assignment for a one bedroom flat set on the 5th floor of The Linear Building overlooking the delightful tree-lined piazza. It will be over 500 sq ft and will have a generously sized bedroom with built-in storage. The kitchen and reception will be open plan and will be well-appointed with high quality fixtures and fittings. There will also be a sleek and modern bathroom also with high quality fittings. The apartment will benefit from a west facing balcony spanning the full width of the apartment.

Residents will have access to communal roof terraces and a wifi lounge providing free wifi. There will also be a new Cineworld cinema, Marks and Spencer supermarket and a Gymbox fitness centre built on site.

This is a fantastic opportunity to purchase the contract for this apartment with completion anticipated for September 2019. Therefore, this apartment should appeal to those looking for a property to move into as well as investors.

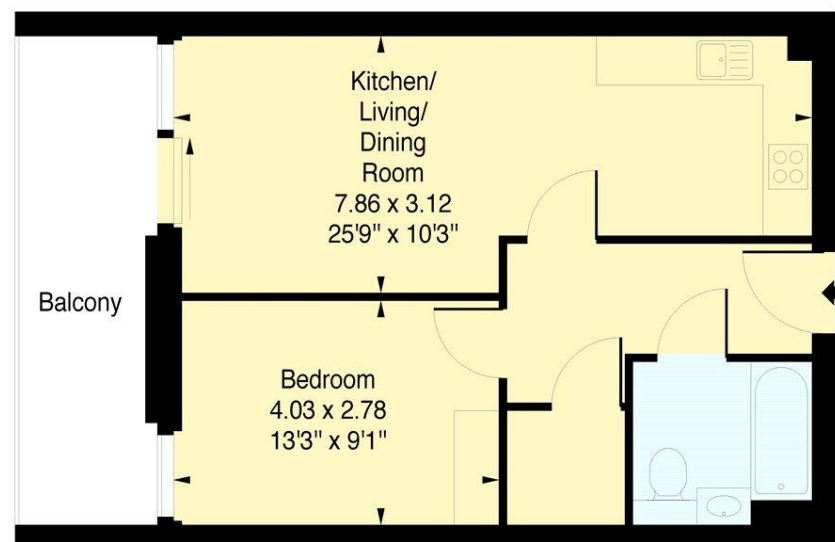
Viewing

Strictly by appointment with Savills.



Carriage House City North Place , N4

Approximate Gross Internal Area = 506 sq ft / 47.01 sqm



Fifth Floor

Measured in accordance with RICS guidelines.
This floor plan is for illustrative purposes only
and must not be relied upon as a statement of fact.
© ollyhewitt.co.uk

Islington
James Davidson
james.davidson@savills.com
+44 (0) 207 226 1313

savills.co.uk

Savills, their clients and any joint agents give notice that: 1. They are not authorised to make or give any representations or warranties in relation to the property either here or elsewhere, either on their own behalf or on behalf of their client or otherwise. They assume no responsibility for any statement that may be made in these particulars. These particulars do not form part of any offer or contract and must not be relied upon as statements or representations of fact. 2. Any areas, measurements or distances are approximate. The text, images and plans are for guidance only and are not necessarily comprehensive. It should not be assumed that the property has all necessary planning, building regulation or other consents and Savills have not tested any services, equipment or facilities. Purchasers must satisfy themselves by inspection or otherwise. 20190417EMNO