



Three bed house wonderfully located in a very quiet but central Islington location.

Clock Tower Mews, Islington, London, N1

Guide Price £1,299,000 Share of Freehold

savills



- Share of freehold modern house • Bright kitchen/dining room • Very private townhouse garden • First floor reception room • Three bedrooms • Two bathrooms, one en-suite • Integrated garage • Guest cloakroom • Very peaceful location • Excellent transport links • Wonderful amenities nearby

Local Information

Clock Tower Mews is set within the Arlington Square conservation area and very close to the Regent's Canal. It is a wonderfully peaceful part of Islington whist still being a short walk away from Upper Street and Essex Road which offer a great selection of restaurants, cafes and bars. The Angel and Old Street tubes are close by and there are numerous bus routes giving access across London.

About this property

This modern house is wonderfully located in a very quiet mews in the Arlington Square conservation area.

The house has an integral garage which the current owners are using as gym. The very bright kitchen/dining room has double doors leading out to a very private and easy to maintain townhouse garden. There is a guest cloakroom to the rear of the kitchen.

The reception on the first floor has lovely views over the mews. To the rear is the first bedroom which is currently used as an office.

On the top floor are two further bedrooms and two bathrooms, one en-suite.



Tenure

Share of Freehold
(Lease Expiry January 2981)

Local Authority

Islington

Council Tax

Band = F

Service Charge

£400 per annum

Energy Performance

EPC Rating = C

Viewing

All viewings will be
accompanied and are strictly
by prior arrangement through
Savills Islington Office.
Telephone:
+44 (0) 207 226 1313.



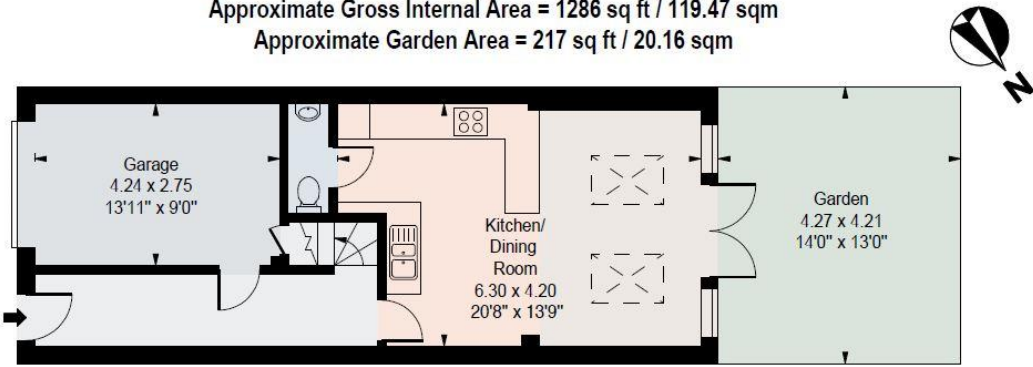


Clock Tower Mews, Islington, London, N1
Gross Internal Area 1286 sq ft, 119.5 m²

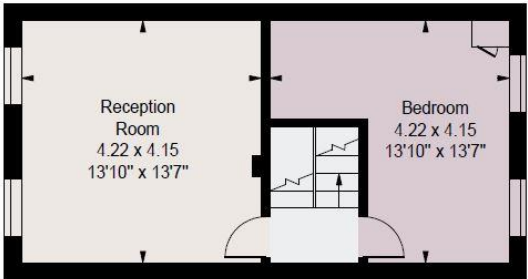
 savills | savills.co.uk

Sarah Curtis
Islington
+44 (0) 207 226 1313
sarah.curtis@savills.com

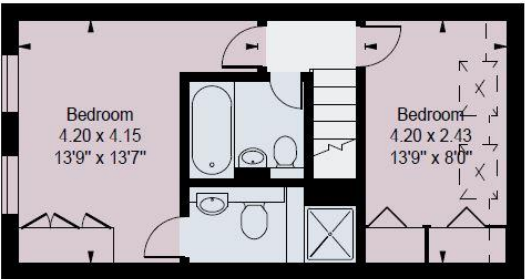
Clock Tower Mews, N1
Approximate Gross Internal Area = 1286 sq ft / 119.47 sqm
Approximate Garden Area = 217 sq ft / 20.16 sqm



Ground Floor

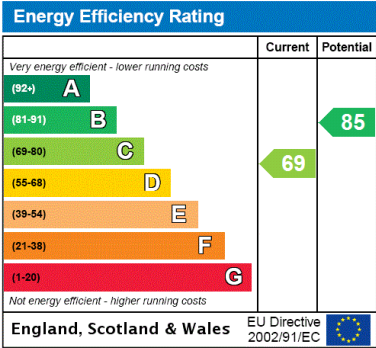


First Floor



Second Floor

Measured in accordance with RICS guidelines.
This floor plan is for illustrative purposes only
and must not be relied upon as a statement of fact.
© ollyhewitt.co.uk



Important Notice Savills, its clients and any joint agents give notice that 1: They are not authorised to make or give any representations or warranties in relation to the property either here or elsewhere, either on their own behalf or on behalf of their client or otherwise. They assume no responsibility for any statement that may be made in these particulars. These particulars do not form part of any offer or contract and must not be relied upon as statements or representations of fact. 2: Any areas, measurements or distances are approximate. The text, photographs and plans are for guidance only and are not necessarily comprehensive. It should not be assumed that the property has all necessary planning, building regulation or other consents and Savills have not tested any services, equipment or facilities. Purchasers must satisfy themselves by inspection or otherwise. 20230119HAKT

