



## Double fronted house – First time on the market in 100 years

**Malvern Terrace, London, N1**

£2,000,000 Freehold

savills



Reception Room • Dining Room  
• Kitchen • 4 double bedrooms •  
Shower room • Separate w.c. •  
Rear garden • Off street parking •  
Double fronted • Prime position •  
Perfect for putting your own mark  
on • Over two floors • No onward  
chain

### Local Information

Malvern Terrace is one of the most sought after locations in the heart of the Barnsbury conservation area. As you enter the terrace, the gardens of all the houses are on the right and the small and pretty park at the top of Richmond Avenue is on the left. It is extremely convenient for the amenities on Upper Street including many bars, restaurants and shops and the excellent transport links at The Angel (Northern Line) and Highbury Corner (Victoria Line/Overland Services).

### Description

Amazingly, this house, in a Prime Islington terrace, has been owned by the same family for over 100 years and offers a fantastic opportunity to reconfigure and renovate. It sits at the top of a pretty cobbled street and is double fronted, offering lateral space over two floors. Currently arranged with four bedrooms, reception room, dining room and kitchen leading out to a bathroom and paved garden. Importantly, it benefits from off street parking and is offered chain free.

### Tenure

Freehold

### Viewing

All viewings will be accompanied and are strictly by prior arrangement through Savills Islington Office.  
Telephone: +44 (0) 207 226 1313.

### Malvern Terrace, London, N1

Gross Internal Area 1450 sq ft, 134.7 m<sup>2</sup>



savills

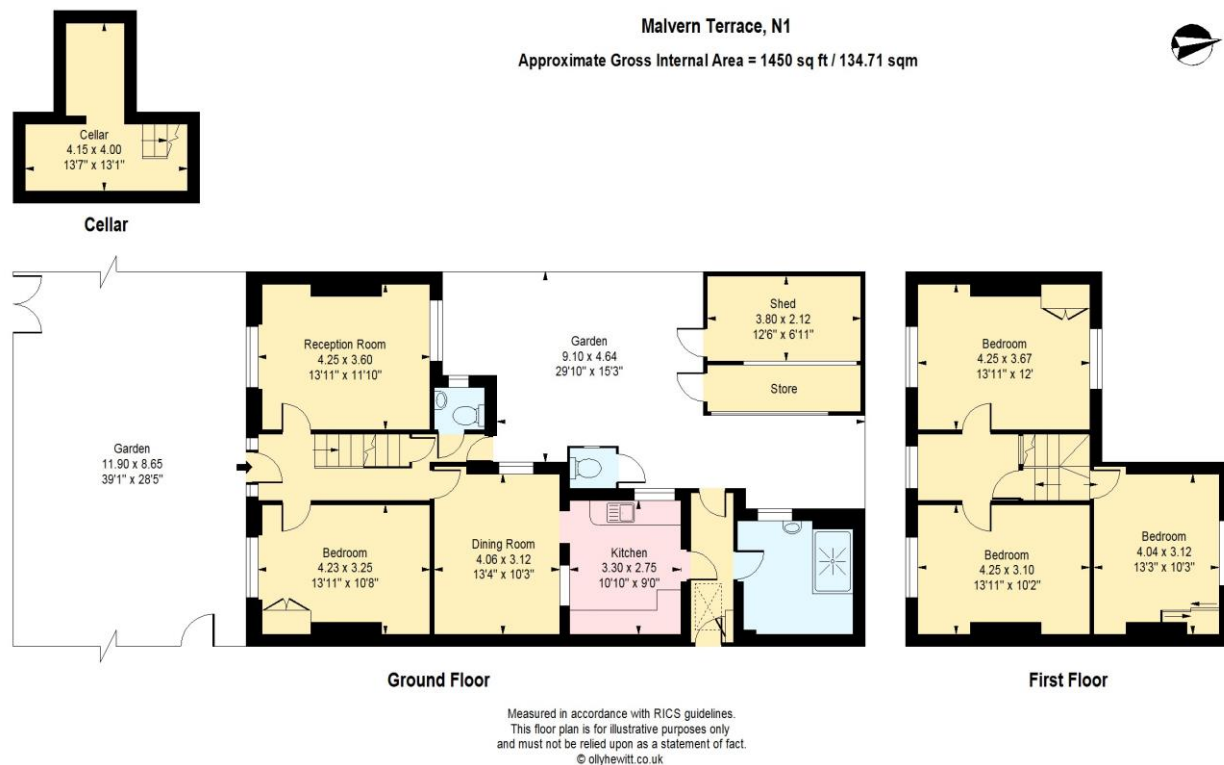
savills.co.uk

Adam Smith

Islington

+44 (0) 207 226 1313

arsmith@savills.com



**Important notice** Savills, its clients and any joint agents give notice that 1: They are not authorised to make or give any representations or warranties in relation to the property either here or elsewhere, either on their own behalf or on behalf of their client or otherwise. They assume no responsibility for any statement that may be made in these particulars. These particulars do not form part of any offer or contract and must not be relied upon as statements or representations of fact. 2: Any areas, measurements or distances are approximate. The text, photographs and plans are for guidance only and are not necessarily comprehensive. It should not be assumed that the property has all necessary planning, building regulation or other consents and Savills have not tested any services, equipment or facilities. Purchasers must satisfy themselves by inspection or otherwise. 20191014EMNO

