



A beautiful two bedroom upper maisonette on Aberdeen Road.

Aberdeen Road, London, N5

£785,000 Share of Freehold



Reception • Kitchen • 2 bedrooms • Separate w.c. • Bathroom •
Set in a Victorian conversion • Bright and airy rooms • Close
to Highbury Barn • Nearby Highbury Fields • Located near to
excellent transport links

Local Information

Aberdeen Road is an attractive residential street moments from Highbury Fields. The well renowned Highbury barn offers a selection of independent local shops including Bournes fishmonger, Godfreys butcher, Di Marios Deli alongside various restaurants and tea rooms. Upper Street is only a short distance away and a selection of transport links are on hand for easy access to the City and West End.

About this property

A beautiful period two bedroom maisonette set on Aberdeen Road. The property offers over 900 sq ft of living space over two floors. The entrance to the apartment is on the first floor. Stairs then lead up to a large reception room with high ceilings and large sash windows, an eat-in kitchen and cloakroom. On the next floor, there are two double bedrooms and a bathroom with built-in storage.

Tenure

Share of Freehold

Local Authority

Islington

Energy Performance

EPC Rating = D

Viewing

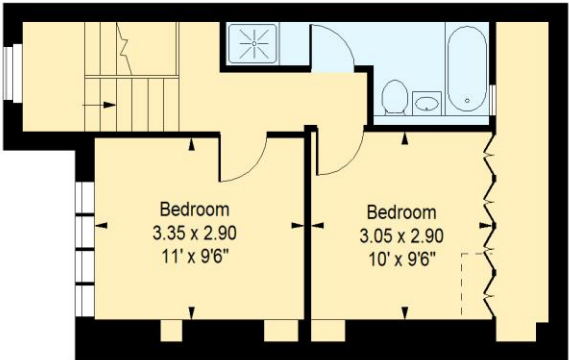
All viewings will be accompanied and are strictly by prior arrangement through Savills Islington Office.
Telephone: +44 (0) 207 226 1313.



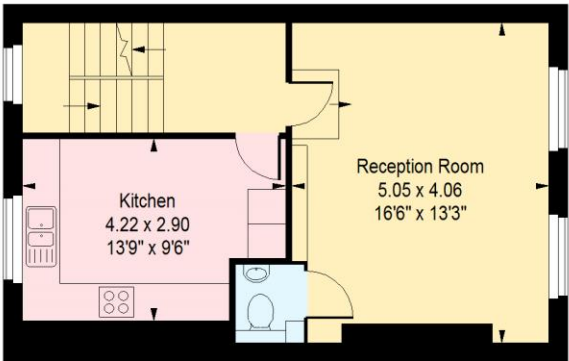


Aberdeen Road, London, N5
Gross Internal Area 936 sq ft, 87 m²

Dan Fox
Islington
+44 (0) 207 226 1313
dan.fox@savills.com

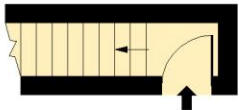


Third Floor



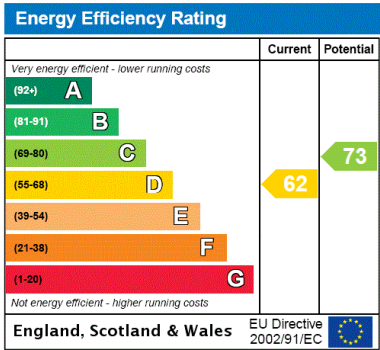
Second Floor

Aberdeen Road, N5
Approximate Gross Internal Area = 936 sq ft / 87.95 sqm



First Floor
Entrance

Measured in accordance with RICS guidelines.
This floor plan is for illustrative purposes only
and must not be relied upon as a statement of fact.
© ollyhewitt.co.uk



Important Notice Savills, its clients and any joint agents give notice that 1: They are not authorised to make or give any representations or warranties in relation to the property either here or elsewhere, either on their own behalf or on behalf of their client or otherwise. They assume no responsibility for any statement that may be made in these particulars. These particulars do not form part of any offer or contract and must not be relied upon as statements or representations of fact. 2: Any areas, measurements or distances are approximate. The text, photographs and plans are for guidance only and are not necessarily comprehensive. It should not be assumed that the property has all necessary planning, building regulation or other consents and Savills have not tested any services, equipment or facilities. Purchasers must satisfy themselves by inspection or otherwise. 20210909EMNO

