



**ON THE WEST SIDE OF THE PREFERRED AND CENTRAL GARDEN SQUARE A MOST ATTRACTIVE 4 STOREY EARLY VICTORIAN TERRACE HOUSE WITH GARAGE**

GIBSON SQUARE, ISLINGTON, N1

**Guide Price £2,375,000, Freehold**

**savills**



first floor drawing room • study • living room • kitchen • dining room • utility • bathroom • 2 shower rooms • separate flat in the basement (that can easily be opened to main house) • West facing garden • 19' x 10' garage • beautiful views over the garden square • Grade II listed

### Location

A most convenient location close to Upper Street shops and restaurants are close by with all transport links at Highbury Corner and The Angel including buses, underground and London Overground and National Rail.

### Description

A light and airy house on the west side of this favoured Islington garden square. The house is in excellent order with many period features such as fireplaces, ceiling mouldings etc. retained. The accommodation is arranged over four floors and includes a separate flat in the basement (that could be opened to the main house if required). The first floor drawing room overlooking the garden square is particularly attractive. The garage has access from the street as well as the west facing garden. A most attractive house that is ready for immediate occupation.

### Viewing

Strictly by appointment with Savills.



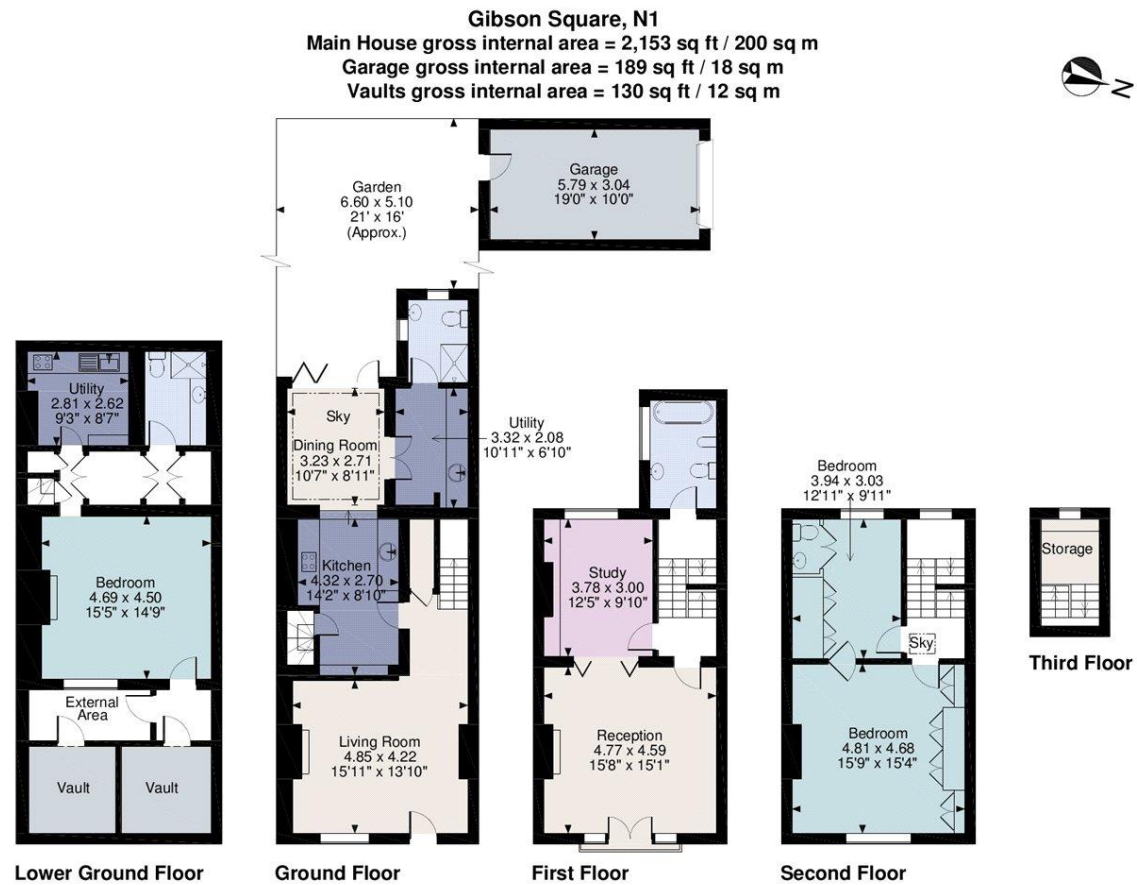












**FOR ILLUSTRATIVE PURPOSES ONLY - NOT TO SCALE**

The position & size of doors, windows, appliances and other features are approximate only.

□ □ □ □ Denotes restricted head height

© ehous. Unauthorised reproduction prohibited. Drawing ref. dig/8393326/TML

**Islington**  
**Paul Williams**  
**pwilliams@savills.com**  
**+44 (0) 207 226 1313**

**savills.co.uk**

Savills, their clients and any joint agents give notice that: 1. They are not authorised to make or give any representations or warranties in relation to the property either here or elsewhere, either on their own behalf or on behalf of their client or otherwise. They assume no responsibility for any statement that may be made in these particulars. These particulars do not form part of any offer or contract and must not be relied upon as statements or representations of fact. 2. Any areas, measurements or distances are approximate. The text, images and plans are for guidance only and are not necessarily comprehensive. It should not be assumed that the property has all necessary planning, building regulation or other consents and Savills have not tested any services, equipment or facilities. Purchasers must satisfy themselves by inspection or otherwise. 20190801EMNO