



Brand new two bed apartment situated on the fifth floor with a private balcony.

City North East Tower, 3 City North Place, London, N4

£475 pw (£2,058.33 pcm) plus fees apply, Furnished
Available from 21.12.2020



- Two Bedrooms
- Brand New
- Balcony
- Concierge
- Excellent Location

About this property

The property is set on the 5th floor of the prestigious City North development in Finsbury Park and offers two double bedrooms, a large open plan kitchen reception room leading to a balcony.

The property is brand new and features high quality fixtures and fittings throughout.

The development is situated next door to Finsbury Park station which offers excellent transport links to Central London, The City and beyond.

Furnishing

Furnished

Local Authority

Council Tax Band = Council Tax

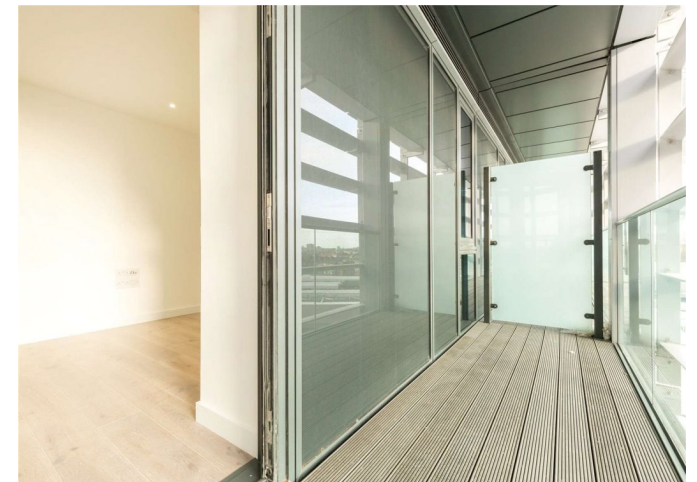
Energy Performance

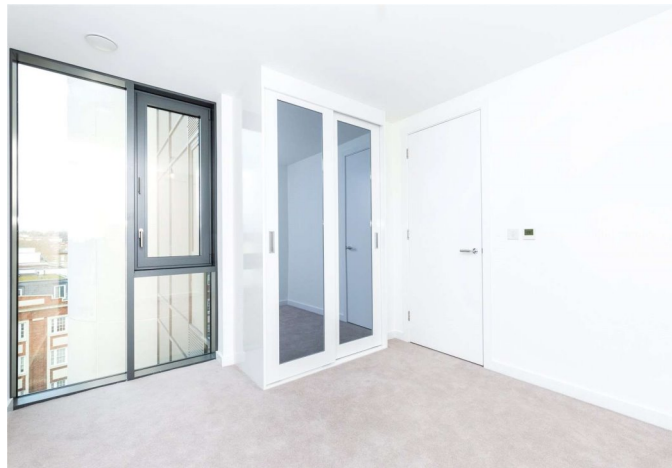
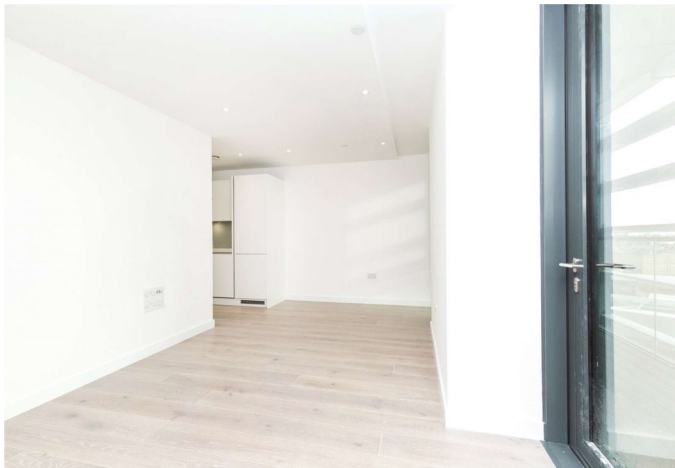
EPC Rating = To be confirmed

Viewing

All viewings will be accompanied and are strictly by prior arrangement through Savills Islington Lettings Office.

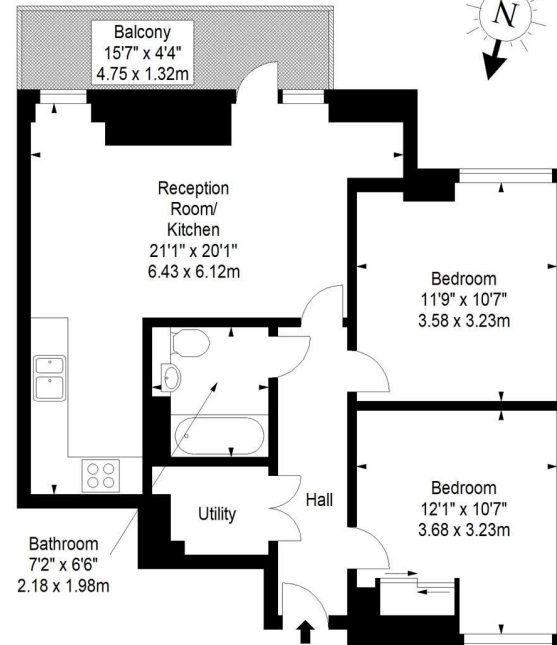
Telephone: +44 (0) 20 7354 6701.





City North East Tower, N4

Approx. Gross Internal Area *
670 Ft² - 62.24 M²



Fifth Floor

Every attempt has been made to ensure the accuracy of this floor plan however, measurements are approximate and for illustration purposes only. Measured in accordance with the RICS code of measuring practice. Not to scale

© Inside Photography Ltd.
Tel 07850 620 122 , 0207 263 2188
www.ipinteriors.co.uk

Important notice Savills, their clients and any joint agents give notice that: 1. They are not authorised to make or give any representations or warranties in relation to the property either here or elsewhere, either on their own behalf or on behalf of their client or otherwise. They assume no responsibility for any statement that may be made in these particulars. These particulars do not form part of any offer or contract and must not be relied upon as statements or representations of fact. 2. Any areas, measurements or distances are approximate. The text, images and plans are for guidance only and are not necessarily comprehensive. It should not be assumed that the property has all necessary planning, building regulation or other consents and Savills have not tested any services, equipment or facilities. Prospective tenants must satisfy themselves by inspection or otherwise. Please note that the local area may be affected by aircraft noise, you should make your own enquiries regarding any noise within the area before you make any offer.

*There are different rules and fees for different tenancy types. For details of our fees and charges please go to [Savills.co.uk/tenant-fees](https://www.savills.co.uk/tenant-fees). For more detailed information read our applicant guide at [savills.co.uk/applicant-guide](https://www.savills.co.uk/applicant-guide). Hard copy available on request. . 20201222MDSP

