



An extremely spacious duplex apartment offering excellent canal views just a short walk from Old Street and Angel.

Wharf Road, Islington, London, N1

£895 pw (£3,878.33 pcm) plus fees apply, Furnished, Part Furnished
Available from 12.09.2020



Three Double Bedrooms • Two Terraces • Over 1600 sq. ft •
Excellent Condition • Lovely Views

Local Information

Location

About this property

The property offers over 1600 sq. ft of space and comprises three double bedrooms, three luxury bathrooms, modern and fully integrated eat-in kitchen with high end Miele appliances and a bright reception room. The property also boasts west facing terraces from both the kitchen and reception room offering stunning views.

Moments from the liveliness of Old Street, world-renowned art galleries and theatres as well as a selection of charming bakeries and antique shops, Islington truly offers the best of all the worlds.

Furnishing

Furnished, Part Furnished

Local Authority

Islington

Council Tax Band = G

Energy Performance

EPC Rating = B

Viewing

All viewings will be accompanied and are strictly by prior arrangement through Savills Islington Lettings Office.
Telephone: +44 (0) 20 7354 6701.





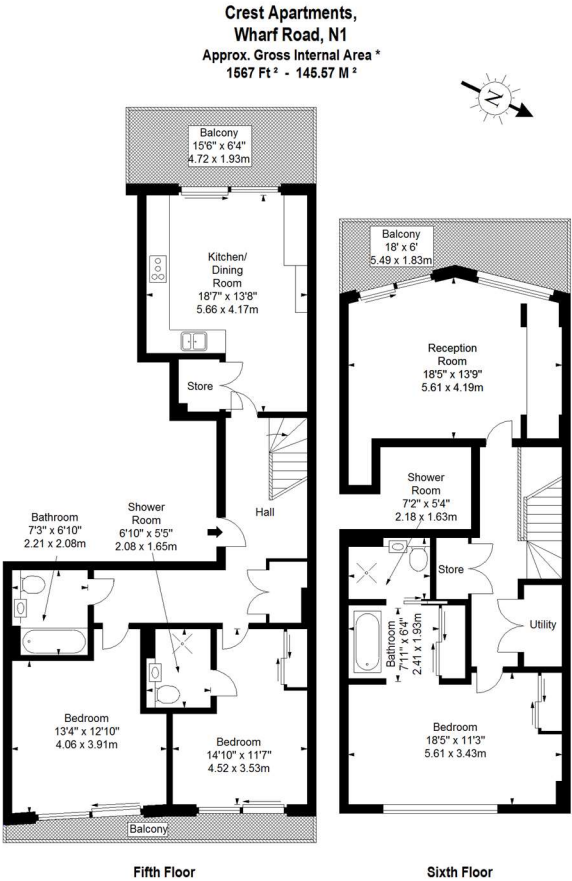
Wharf Road, Islington, London, N1
Gross Internal Area 1635 sq ft, 151.9 m²



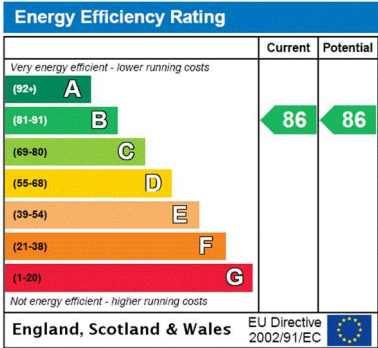
savills

savills.co.uk

Georgina Catton
Islington Lettings
+44 (0) 20 7354 6701
georgina.catton@savills.com



Every attempt has been made to ensure the accuracy of this floor plan however, measurements are approximate and for illustration purposes only. Measured in accordance with the RICS code of measuring practice. Not to scale.
© Inside Photography Ltd.
Tel 07850 620 122, 0207 263 2188
www.jointinteriors.co.uk



Important notice Savills, their clients and any joint agents give notice that: 1. They are not authorised to make or give any representations or warranties in relation to the property either here or elsewhere, either on their own behalf or on behalf of their client or otherwise. They assume no responsibility for any statement that may be made in these particulars. These particulars do not form part of any offer or contract and must not be relied upon as statements or representations of fact. 2. Any areas, measurements or distances are approximate. The text, images and plans are for guidance only and are not necessarily comprehensive. It should not be assumed that the property has all necessary planning, building regulation or other consents and Savills have not tested any services, equipment or facilities. Prospective tenants must satisfy themselves by inspection or otherwise. Please note that the local area may be affected by aircraft noise, you should make your own enquiries regarding any noise within the area before you make any offer.

*There are different rules and fees for different tenancy types. For details of our fees and charges please go to Savills.co.uk/tenant-fees. For more detailed information read our applicant guide at savills.co.uk/applicant-guide.
Hard copy available on request. . 20200914MDSP

