



A modern apartment in this prestigious Highbury Square Development, with great travel links to Upper Street and the City.

Northstand Apartments, Highbury, Islington, London, N5

£350 pw (£1,516.67 pcm) plus fees apply, Part Furnished, Unfurnished
Available from 09.01.2021



- Lovely apartment
- Easy access to Upper Street
- Modern Development
- 24 hour concierge
- Balcony
- Communal Garden

Local Information

Highbury Square is the redevelopment of Arsenal's world renowned Highbury Stadium, and features high specification portered apartments set around a central garden laid out on the site of the football pitch.

Transport links are via the regular bus services along Highbury Park, towards Upper Street and on to St Pauls or Holborn.

Arsenal station is close by and is on the Piccadilly Line which is three stops from Kings Cross, and within seven stops of Leicester Square and Holborn.

About this property

Highbury Stadium, the former home of Arsenal Football Club, is now a development of luxury flats on the exact site of the old stands, with a large formal garden where the football pitch once sat.

Set in the prestigious Highbury Stadium Square Development this outstanding 540 sqft , ground floor apartment in the prestigious Highbury Square development, furnished to an exceptional standard and featuring wood floors, stylish contemporary fittings, ample storage and balcony overlooking the internal gated courtyard.

Furnishing

Part Furnished, Unfurnished

Local Authority

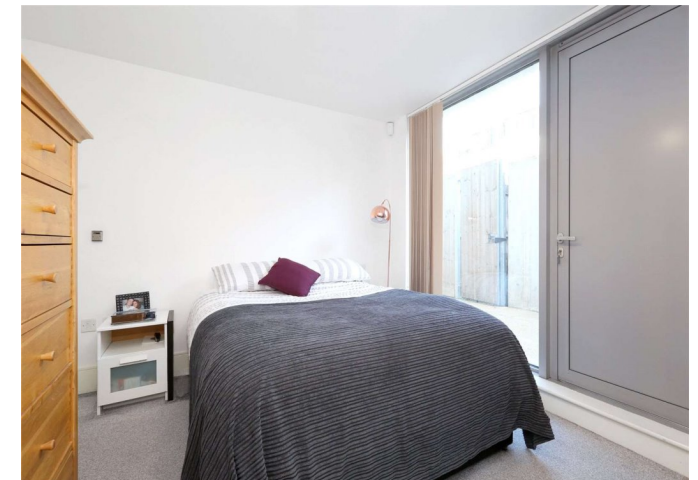
Islington
Council Tax Band = D

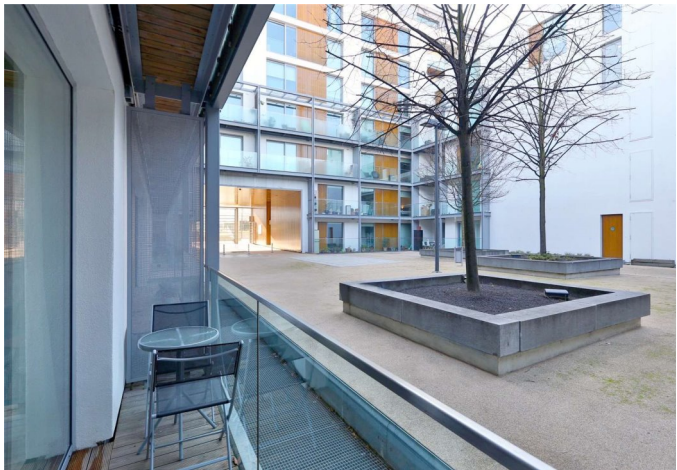
Energy Performance

EPC Rating = B

Viewing

All viewings will be accompanied and are strictly by prior arrangement through Savills Islington Lettings Office.
Telephone: +44 (0) 20 7354 6701.





Northstand Apartments, Highbury, Islington, London, N5

Gross Internal Area 540 sq ft, 50.2 m²

Fitore Vula

Islington Lettings

+44 (0) 20 7354 6701

fvula@savills.com



savills

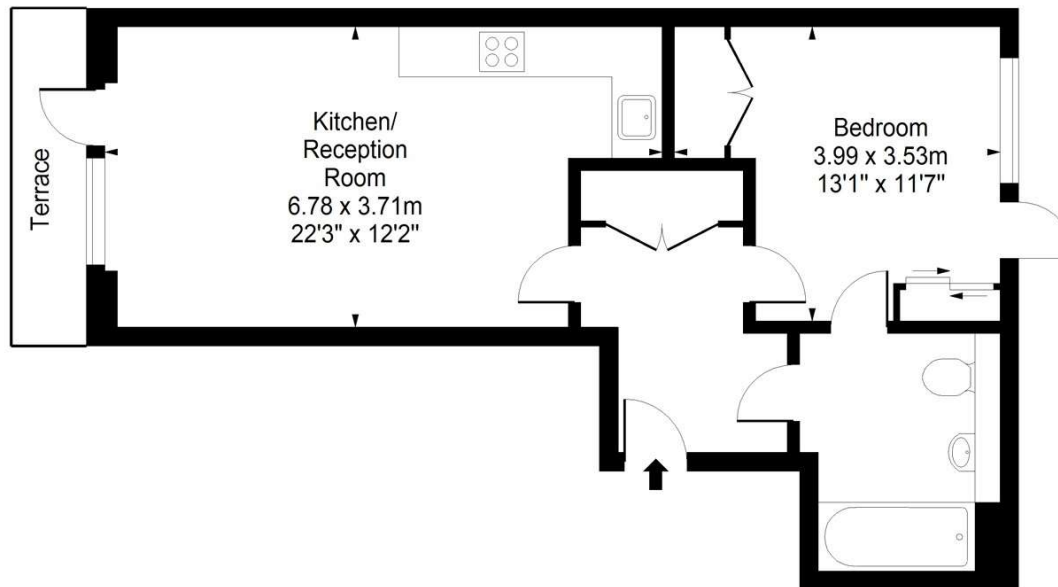
[savills.co.uk](https://www.savills.co.uk)



Northstand

Gross internal area (Excluding Balcony) = 540 sq ft / 50 sq m

Gross internal area (Including Balcony) = 581 sq ft / 54 sq m



Ground Floor

FOR ILLUSTRATIVE PURPOSES ONLY - NOT TO SCALE

The position & size of doors, windows, appliances and other features are approximate only.

Important notice Savills, their clients and any joint agents give notice that: 1. They are not authorised to make or give any representations or warranties in relation to the property either here or elsewhere, either on their own behalf or on behalf of their client or otherwise. They assume no responsibility for any statement that may be made in these particulars. These particulars do not form part of any offer or contract and must not be relied upon as statements or representations of fact. 2. Any areas, measurements or distances are approximate. The text, images and plans are for guidance only and are not necessarily comprehensive. It should not be assumed that the property has all necessary planning, building regulation or other consents and Savills have not tested any services, equipment or facilities. Prospective tenants must satisfy themselves by inspection or otherwise. Please note that the local area may be affected by aircraft noise, you should make your own enquiries regarding any noise within the area before you make any offer.

*There are different rules and fees for different tenancy types. For details of our fees and charges please go to [Savills.co.uk/tenant-fees](https://www.savills.co.uk/tenant-fees). For more detailed information read our applicant guide at [savills.co.uk/applicant-guide](https://www.savills.co.uk/applicant-guide). Hard copy available on request. . 20201119MDSP



arla | **propertymark**

PROTECTED