



Stylish one bedroom apartment in the heart of Highbury.

Morea Mews, Highbury, Islington, London, N5

£425 pw (£1,841.67 pcm) plus fees apply, Furnished
Available from 15.12.2020

savills

- 1 bedroom, 1 bathroom
- Private balcony
- Modern kitchen
- Dark wood floors
- Contemporary bathroom
- 24 hour concierge
- Heart of Highbury

Local Information

Highbury is a residential suburb in the London Borough of Islington. The area has traditionally had a very friendly, mixed demographic, from music producers to bankers, comedians and journalists to lawyers and politicians. Within a short walk of Highbury & Islington Station is the open space of Highbury Fields surrounded by impressive Georgian and Victorian architecture, popular in the summer months with outdoor public tennis and netball courts and a small indoor fitness centre and pool. Highbury Barn is a small parade of independent award winning local shops and amenities, including Godfrey's butchers and Highbury Vintners.

Housing stock in the area is largely Victorian and Georgian, ranging from the grand villas of Highbury Hill and the huge flat fronted town houses of Highbury Place to the pretty, tree lined streets east of Petherton Road and north of Highbury Fields.

Check www.tfl.gov.uk/journeyplanner to plan your commute.

About this property

This one bedroom apartment features an open plan reception room with modern kitchen and direct access to a private balcony.

This beautiful apartment further benefits from a double bedroom with floor to ceiling windows, a large fitted wardrobe and a contemporary bathroom. Additional features include a 24 hour concierge, high quality fixtures and fittings and dark wood floors throughout.

Transport links are via the regular bus services along Highbury Park, towards Upper Street and on to St Pauls or Holborn or along Green Lanes which has two bus routes towards London Bridge or Holborn.

Furnishing

Furnished

Local Authority

ISLINGTON, London
Council Tax Band = D

Energy Performance

EPC Rating = B

Viewing

All viewings will be accompanied and are strictly by prior arrangement through Savills Islington Lettings Office.
Telephone: +44 (0) 20 7354 6701.





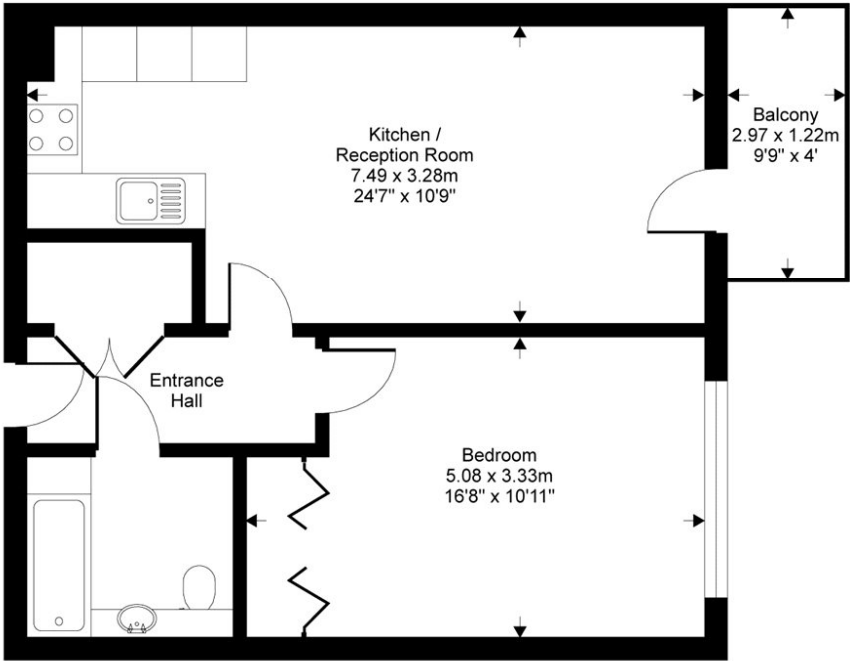
Morea Mews, Highbury, Islington, London, N5
Gross Internal Area 546 sq ft, 50.7 m²

Oktaj Nebija
Islington Lettings
+44 (0) 20 7354 6701
oktaj.nebija@savills.com

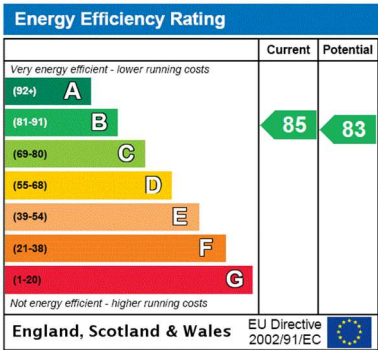
 onTheMarket.com |  savills | savills.co.uk

Morea Mews, London, N5

Gross internal floor area (approx):
51 sq m / 546 sq ft
For Identification only - Not to scale
Niche Communications



Third floor



Important notice Savills, their clients and any joint agents give notice that: 1. They are not authorised to make or give any representations or warranties in relation to the property either here or elsewhere, either on their own behalf or on behalf of their client or otherwise. They assume no responsibility for any statement that may be made in these particulars. These particulars do not form part of any offer or contract and must not be relied upon as statements or representations of fact. 2. Any areas, measurements or distances are approximate. The text, images and plans are for guidance only and are not necessarily comprehensive. It should not be assumed that the property has all necessary planning, building regulation or other consents and Savills have not tested any services, equipment or facilities. Prospective tenants must satisfy themselves by inspection or otherwise. Please note that the local area may be affected by aircraft noise, you should make your own enquiries regarding any noise within the area before you make any offer.

*There are different rules and fees for different tenancy types. For details of our fees and charges please go to Savills.co.uk/tenant-fees. For more detailed information read our applicant guide at savills.co.uk/applicant-guide.
Hard copy available on request. . 20201023MDSP

