



A top floor modern apartment with balcony in great Islington location.

Sheringham Road, Highbury, Islington, London, N7

£475 pw (£2,058.33 pcm) plus fees apply
Available from 09.12.2019



- 1 double bedroom
- 1 single/study room
- Balcony
- Lift
- Excellent transport links

Local Information

Highbury is a residential suburb in the London Borough of Islington. The area has traditionally had a very friendly, mixed demographic, from music producers to bankers, comedians and journalists to lawyers and politicians. Within a short walk of Highbury & Islington Station is the open space of Highbury Fields surrounded by impressive Georgian and Victorian architecture, popular in the summer months with outdoor public tennis and netball courts and a small indoor fitness centre and pool. Highbury Barn is a small parade of independent award winning local shops and amenities, including Godfrey's butchers and Highbury Vintners.

Housing stock in the area is largely Victorian and Georgian, ranging from the grand villas of Highbury Hill and the huge flat fronted town houses of Highbury Place to the pretty, tree lined streets east of Petherton Road and north of Highbury Fields.

Liverpool Road runs the length of Barnsbury from Holloway Road in the north to the Angel end of Upper Street in the south.

About this property

A modern and bright apartment located on the top floor of this part modernized period building with lift, overlooking the beautiful St' Mary Magdalene Church Gardens, and within easy walking distance to Highbury & Islington Station and Upper Street.

The property comprises an open plan living space with modern fitted kitchen with breakfast bar and under floor heating, a double bedroom with storage and patio doors leading onto a Balcony, a further single bedroom/study, bathroom and shower.

Furnishing

Part Furnished

Local Authority

Islington

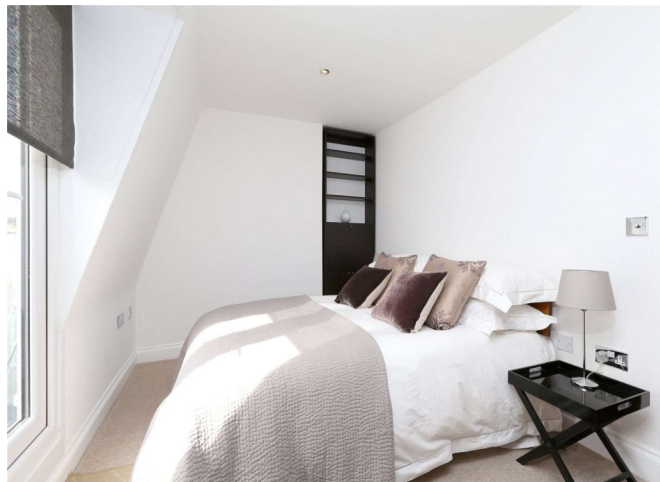
Energy Performance

EPC Rating = D

Viewing

All viewings will be accompanied and are strictly by prior arrangement through Savills Islington Lettings Office.

Telephone: +44 (0) 20 7354 6701.






Sheringham Road, Highbury, Islington, London, N7
Gross Internal Area 572 sq ft, 53.1 m²

Lucy Whistler
Islington Lettings
+44 (0) 20 7354 6701
lucy.whistler@savills.com

 |  savills | savills.co.uk



Energy Efficiency Rating		
	Current	Potential
Very energy efficient - lower running costs		
(92+) A		
(81-91) B		
(69-80) C		
(55-68) D	63	63
(39-54) E		
(21-38) F		
(1-20) G		
Not energy efficient - higher running costs		
England, Scotland & Wales EU Directive 2002/91/EC 		

Important notice Savills, their clients and any joint agents give notice that: 1. They are not authorised to make or give any representations or warranties in relation to the property either here or elsewhere, either on their own behalf or on behalf of their client or otherwise. They assume no responsibility for any statement that may be made in these particulars. These particulars do not form part of any offer or contract and must not be relied upon as statements or representations of fact. 2. Any areas, measurements or distances are approximate. The text, images and plans are for guidance only and are not necessarily comprehensive. It should not be assumed that the property has all necessary planning, building regulation or other consents and Savills have not tested any services, equipment or facilities. Prospective tenants must satisfy themselves by inspection or otherwise. Please note that the local area may be affected by aircraft noise, you should make your own enquiries regarding any noise within the area before you make any offer.

*There are different rules and fees for different tenancy types. For details of our fees and charges to go to Savills.co.uk/tenant-fees. For more detailed information read our applicant guide at savills.co.uk/applicant-guide. Hard copy available on request. . 20191111ELTO

