



A RECENTLY REFURBISHED TWO BEDROOM SPLIT LEVEL MAISONETTE IN THE HEART OF ISLINGTON.

ISLINGTON PARK STREET
BARNSBURY, LONDON, N1 1QB

Part Furnished, £525 pw (£2,275 pcm) + fees and other charges apply.*

Available from 06/10/2019



- 2 Bedrooms • 1 Bathrooms • 1 Reception
- Excellent Location • Immaculate Condition •
- Unfurnished • Wooden Flooring • Modern décor
- throughout • EPC Rating = To be confirmed •
- Council Tax = E

Description

The property has been refurbished to a very high standard throughout and offers a large open plan kitchen reception room with breakfast bar and fully integrated appliances, master bedroom with built in storage, further bedroom ideal for occasional use/ study and a modern and stylish bathroom suite.

Islington Park Street is just moments from the shops, cafes and restaurants of Upper Street whilst Highbury & Islington and Angel Stations are also a short walk.

EPC Rating: C

Energy Performance

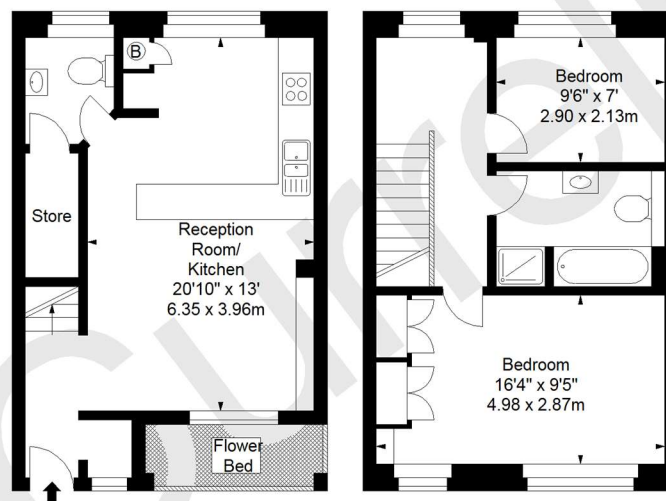
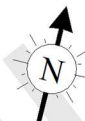
A copy of the full Energy Performance Certificate is available on request.

Viewing

Strictly by appointment with Savills.



Islington Park Street, N1
Approx. Gross Internal Area *
754 Ft² - 70.05 M²



Ground Floor

First Floor

Every attempt has been made to ensure the accuracy of this floor plan however, measurements are approximate and for illustration purposes only. Measured in accordance with the RICS code of measuring practice. Not to scale
 © Inside Photography Ltd.
 Tel 07860 620 122 , 0207 263 2188
www.ipinteriors.co.uk

FLOORPLANS

Gross internal area: 754 sq ft, 69.7 m²



Islington Lettings

Peter Crossan
peter.crossan@savills.com

Please note that the local area may be affected by aircraft noise, you should make your own enquiries regarding any noise within the area before you make any offer.

*There are different rules and fees for different tenancy types. For details of our fees and charges go to [savills.co.uk/tenant-fees](https://www.savills.co.uk/tenant-fees). For more detailed information read our [Applicant Guide](#), hard copy available on request. 20190809CRIC

Important notice: Savills, their clients and any joint agents give notice that: 1: They are not authorised to make or give any representations or warranties in relation to the property either here or elsewhere, either on their own behalf or on behalf of their client or otherwise. They assume no responsibility for any statement that may be made in these particulars. These particulars do not form part of any offer or contract and must not be relied upon as statements or representations of fact. 2: Any areas, measurements or distances are approximate. The text, photographs and plans are for guidance only and are not necessarily comprehensive. It should not be assumed that the property has all necessary planning, building regulation or other consents and Savills have not tested any services, equipment or facilities. Tenants must satisfy themselves by inspection or otherwise.