



A modern two bedroom, two bathroom mansion flat benefiting from direct access to residents communal gardens.

Carlton Mansions, 215 Randolph Avenue, London, W9

Guide Price £875,000 Leasehold (Lease Expiry June 2993)

savills

- Modern
- Long lease
- Direct access to communal gardens
- Fully integrated kitchen & modern appliances
- Stylish bathroom

Local Information

Maida Vale is a stunning location in west London, offering period conversions and red-brick mansion flats some of which include well-manicured communal gardens. Paddington Recreational Ground offers open green space for the avid jogger and dog walker, as well as an athletics track, gym and 3D artificial pitch.

In addition, there are a number of tennis clubs in the immediate area.

BBC Maida Vale Studios is conveniently located on a quiet residential street and hosts a number of live performances.

The local area has excellent transport links from Maida Vale Station (Bakerloo Line) and great bus links into central London.

Maida Vale benefits from a wide selection of local amenities such as cafes, bars, restaurants and florists accessible via Elgin Avenue and Lauderdale Parade.

Please note all distances are approximate.

About this property

An impressive two bedroom lateral apartment within a sought after mansion block in Maida Vale.

The property is modern and has direct access to communal gardens.

The accommodation comprises a principal bedroom with built-in wardrobes and en-suite shower room, a further double bedroom with built-in wardrobes, utility cupboard, open plan fitted kitchen and bright reception room.

The property is conveniently located a short distance to local amenities of Elgin Avenue, Maida Station (Bakerloo line) and Paddington Recreation Ground.

NB: Photos taken September 2018

Tenure

Leasehold (Lease Expiry June 2993)

Local Authority

Westminster

Council Tax

Band = E

Ground Rent

TBC

Service Charge

TBC

Energy Performance

EPC Rating = To be confirmed

Viewing

All viewings will be accompanied and are strictly by prior arrangement through Savills Maida Vale & Little Venice Office.

Telephone: +44 (0) 20 3425 5600.





Carlton Mansions, 215 Randolph Avenue, London, W9
Gross Internal Area 853 sq ft, 79.2 m²

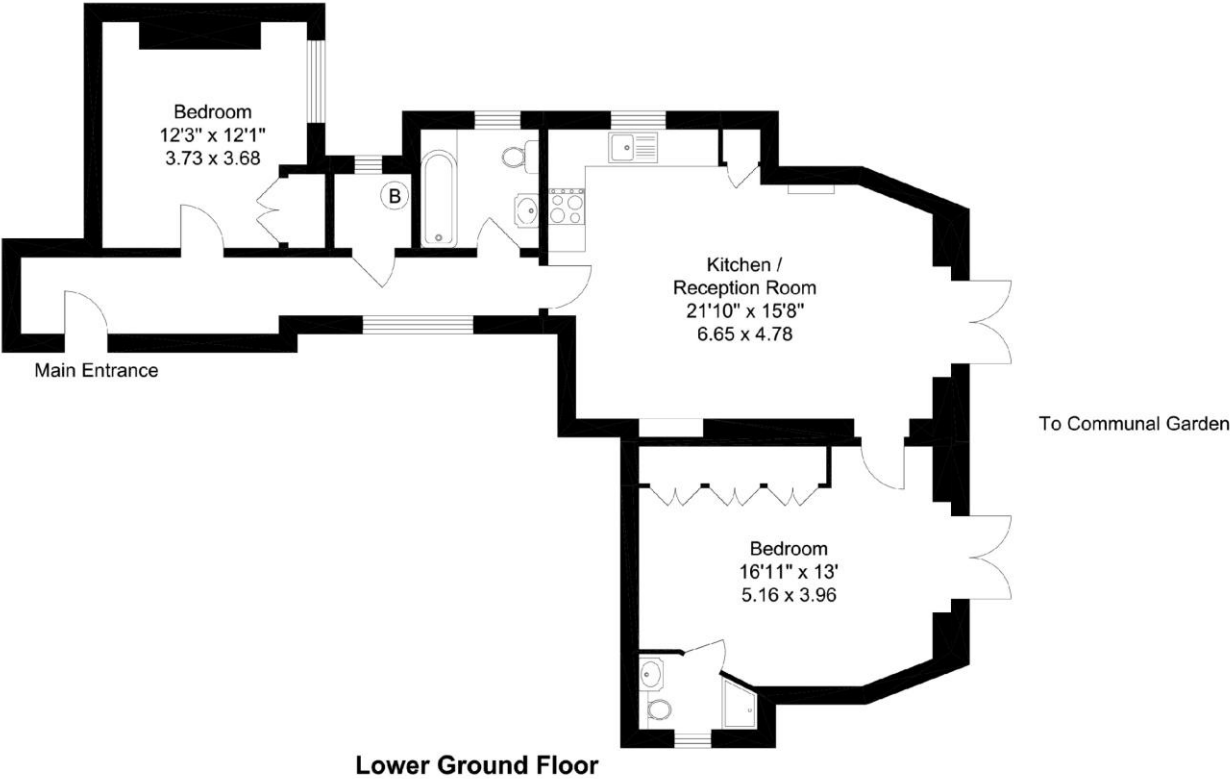
 savills | savills.co.uk

George Baskerville
Maida Vale & Little Venice
+44 (0) 20 3425 5600
george.baskerville@savills.com


Carlton Mansions, 215 Randolph Avenue, W9

79 sq m (853 sq ft)

For identification purposes only. Not to scale
© Redinventory 2018.



Lower Ground Floor

Energy Efficiency Rating		
	Current	Potential
Very energy efficient - lower running costs		
(92+) A	<div>64</div>	<div>77</div>
(81-91) B		
(69-80) C		
(55-68) D		
(39-54) E		
(21-38) F		
(1-20) G		
Not energy efficient - higher running costs		
England, Scotland & Wales		EU Directive 2002/91/EC 

Important Notice Savills, its clients and any joint agents give notice that 1: They are not authorised to make or give any representations or warranties in relation to the property either here or elsewhere, either on their own behalf or on behalf of their client or otherwise. They assume no responsibility for any statement that may be made in these particulars. These particulars do not form part of any offer or contract and must not be relied upon as statements or representations of fact. 2: Any areas, measurements or distances are approximate. The text, photographs and plans are for guidance only and are not necessarily comprehensive. It should not be assumed that the property has all necessary planning, building regulation or other consents and Savills have not tested any services, equipment or facilities. Purchasers must satisfy themselves by inspection or otherwise. 20220726IVCH

