



A second floor bright apartment with recently fitted kitchen and bathroom, generous living space and two double bedrooms.

Malvern Road, London, NW6

£475,000 Share of Freehold



- Two double bedrooms • Share of freehold • Bright and airy
- Generous living room • New kitchen and bathroom • Chain free

Local Information

Maida Vale is a stunning location in west London, offering period conversions and red-brick mansion flats some of which include well-manicured communal gardens.

Paddington Recreational Ground offers open green space for the avid jogger and dog walker, as well as an athletics track, gym and 3D artificial pitch. In addition, there are a number of tennis clubs in the immediate area.

BBC Maida Vale Studios is conveniently located on a quiet residential street and hosts a number of live performances.

The local area has excellent transport links from Warwick Avenue Station (Bakerloo line), Westbourne Park (Circle, Hammersmith & City lines) and great bus links into central London.

Maida Vale benefits from a wide selection of local amenities such as cafes, bars, restaurants and florists accessible via Elgin Avenue and Lauderdale Parade.

About this property

This lovely and bright second floor apartment comes with a newly fitted kitchen and bathroom which is finished in marble. Both bedrooms are double with large windows overlooking the street with an open aspect. The lounge has space for a dining table and is quietly nestled at the back of the property. The apartment is sold with a share of the freehold and no onward chain.

Tenure

Share of Freehold

Local Authority

Brent Council

Energy Performance

EPC Rating = C

Viewing

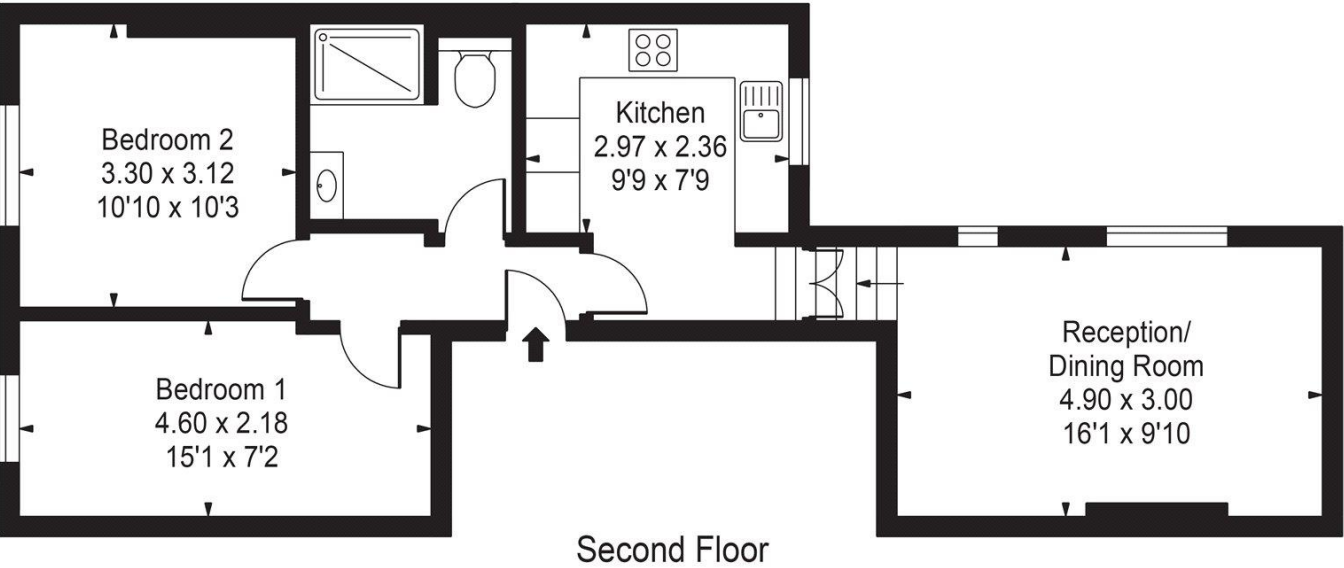
All viewings will be accompanied and are strictly by prior arrangement through Savills Maida Vale & Little Venice Office. Telephone: +44 (0) 20 3425 5600.






Malvern Road, London, NW6
Gross Internal Area 593 sq ft, 55.1 m²

Malvern Road
Gross Internal Area(Approx)
Total = 55.09 Sq m / 593 Sq ft
For Illustration Purposes Only - Not To Scale
Floorplan by Humble Spy Photography Ltd.



| Energy Efficiency Rating | | |
|---|---|-----------|
| | Current | Potential |
| Very energy efficient - lower running costs | | |
| (92+) A | | |
| (81-91) B | | |
| (69-80) C | 74 | 81 |
| (55-68) D | | |
| (39-54) E | | |
| (21-38) F | | |
| (1-20) G | | |
| Not energy efficient - higher running costs | | |
| England, Scotland & Wales | EU Directive 2002/91/EC  | |

Important Notice Savills, its clients and any joint agents give notice that 1: They are not authorised to make or give any representations or warranties in relation to the property either here or elsewhere, either on their own behalf or on behalf of their client or otherwise. They assume no responsibility for any statement that may be made in these particulars. These particulars do not form part of any offer or contract and must not be relied upon as statements or representations of fact. 2: Any areas, measurements or distances are approximate. The text, photographs and plans are for guidance only and are not necessarily comprehensive. It should not be assumed that the property has all necessary planning, building regulation or other consents and Savills have not tested any services, equipment or facilities. Purchasers must satisfy themselves by inspection or otherwise. 20210326IVCH

