



Bright and well-presented three bedroom mews house
on a quiet cobbled residential street.

Andover Place, Maida Vale, London, NW6

£1,175,000 Freehold



- Three double bedrooms • Three bathrooms • Ample storage
- Private patio garden • Chain free

Local Information

Andover Place is situated in the heart of Maida Vale, moments from the open spaces of Paddington Recreation Ground and a short walk from the fantastic local amenities of Lauderdale Parade, Clifton Road and Formosa Street.

The property is conveniently located for the superb range of transport links including Maida Vale tube station (Bakerloo line) and Paddington train station with its national connections.

About this property

Savills is pleased to offer for sale this three bedroom mews house in the heart of Maida Vale moments from the open green spaces of Paddington Recreation Ground, local amenities and Maida Vale station (Bakerloo line).

The property benefits from a private patio garden and wood flooring. The accommodation is arranged over three floors comprising three double bedrooms, three bathrooms (second en-suite), bright and airy reception room benefiting from a Juliet balcony, guest WC, study, fully integrated kitchen/diner leading onto a private patio garden, with converted garage with ample storage.

Tenure

Freehold

Local Authority

City Of Westminster

Energy Performance

EPC Rating - B

Viewing

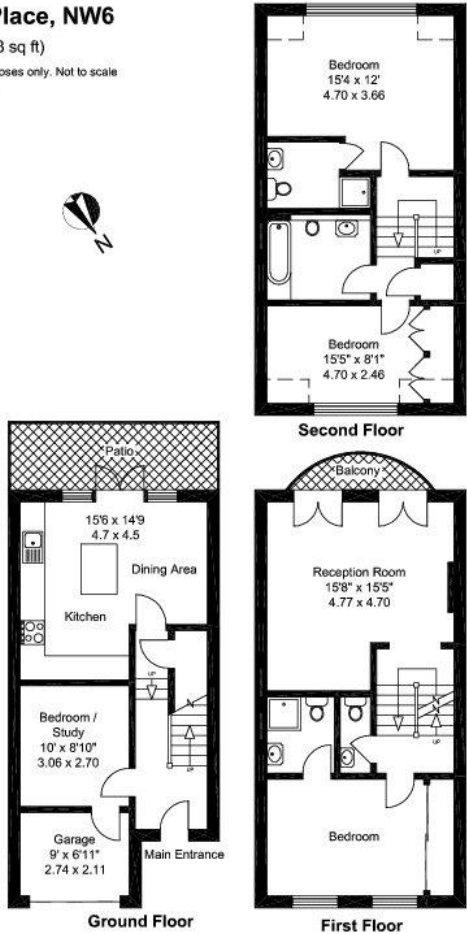
All viewings will be accompanied and are strictly by prior arrangement through Savills Maida Vale & Little Venice Office. Telephone: +44 (0) 20 3425 5600.






Andover Place, Maida Vale, London, NW6
Gross Internal Area 1473 sq ft, 137 m²

Andover Place, NW6
137 sq m (1,473 sq ft)
For identification purposes only. Not to scale.
© RedInventory 2017.



Energy Efficiency Rating		
	Current	Potential
Very energy efficient - lower running costs		
(92+) A		
(81-91) B		
(69-80) C		
(55-68) D		
(39-54) E		
(21-38) F		
(1-20) G		
Not energy efficient - higher running costs		
	76	84
England, Scotland & Wales	EU Directive 2002/91/EC 	

Important Notice Savills, its clients and any joint agents give notice that 1: They are not authorised to make or give any representations or warranties in relation to the property either here or elsewhere, either on their own behalf or on behalf of their client or otherwise. They assume no responsibility for any statement that may be made in these particulars. These particulars do not form part of any offer or contract and must not be relied upon as statements or representations of fact. 2: Any areas, measurements or distances are approximate. The text, photographs and plans are for guidance only and are not necessarily comprehensive. It should not be assumed that the property has all necessary planning, building regulation or other consents and Savills have not tested any services, equipment or facilities. Purchasers must satisfy themselves by inspection or otherwise. 20201116IVCH

