



A rare and fantastic opportunity to purchase an unmodernised apartment with amazing views over Paddington Recreational ground.

**Ashworth Mansions, Grantully Road, London, W9**

£900,000 Share of Freehold





- Unmodernised • Amazing outlook • Communal gardens
- Large rooms • Balcony • Must be viewed

### Local Information

Ashworth Mansions is situated in the heart of Maida Vale, moments away from the open spaces of Paddington Recreation ground, Maida Vale tube station and a short walk from the fantastic local amenities on Lauderdale Parade, Clifton Road and Formosa Street.

The property is also conveniently located for the superb range of transport links including Paddington station with its national connections.

### About this property

This third floor lateral apartment offers a fantastic opportunity for any purchaser to make their own.

The vendors of this amazing apartment lived here happily for many years because of its splendid views over the park and convenient location. The property offers over 1000 sq. ft. of accommodation with three bedrooms, bathroom, separate WC, kitchen, lounge and balcony. There is access to the communal gardens and a share of freehold.

### Tenure

Share of Freehold (88 underlying leasehold years remaining)

### Local Authority

City Of Westminster

### Energy Performance

EPC Rating = To be confirmed

### Viewing

All viewings will be accompanied and are strictly by prior arrangement through Savills Maida Vale & Little Venice Office. Telephone: +44 (0) 20 3425 5600.





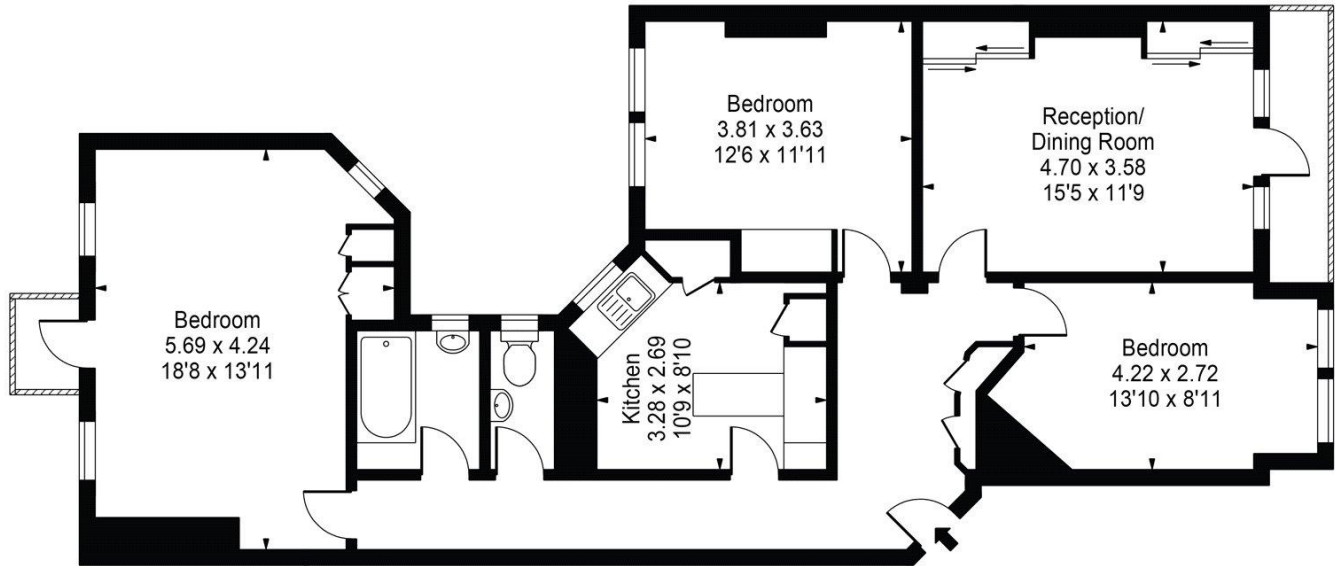




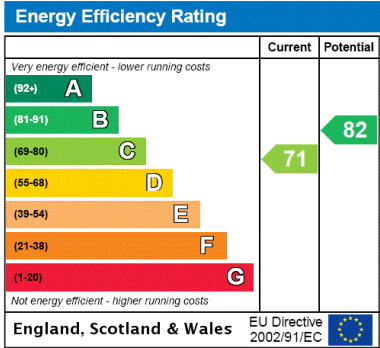
Ashworth Mansions, Grantully Road, London, W9  
Gross Internal Area 1055 sq ft, 98 m<sup>2</sup>

**Emma Clowes**  
Maida Vale & Little Venice  
**+44 (0) 20 3425 5600**  
emma.clowes@savills.com

Ashworth Mansions  
Gross Internal Area(Approx)  
Total = 98.01 Sq m / 1055 Sq ft  
For Illustration Purposes Only - Not To Scale  
Floorplan by Humble Spy Photography Ltd.



Second Floor



**Important Notice** Savills, its clients and any joint agents give notice that 1: They are not authorised to make or give any representations or warranties in relation to the property either here or elsewhere, either on their own behalf or on behalf of their client or otherwise. They assume no responsibility for any statement that may be made in these particulars. These particulars do not form part of any offer or contract and must not be relied upon as statements or representations of fact. 2: Any areas, measurements or distances are approximate. The text, photographs and plans are for guidance only and are not necessarily comprehensive. It should not be assumed that the property has all necessary planning, building regulation or other consents and Savills have not tested any services, equipment or facilities. Purchasers must satisfy themselves by inspection or otherwise. 20210105IVCH

