



A detached house in a private gated mews within a lovely community and a wealth of history. Must be viewed.

St. Luke's Yard, Queen's Park, London, W9

£1,475,000 Freehold

savills

**Private gated mews • Private patio •
Off-street parking • Immaculate condition •
Chain free**

Local Information

Known for family-friendly living, Queen's Park is a vibrant residential village bordering London Borough of Brent.

Salisbury Road is a sought-after location for independent cafes, bars, restaurants such as 'Gail's' and 'The Alice House' together with antique shops. 'Salisbury Primary School' is a very well regarded local primary school, which opens its gates every weekend to host a local farmer's market in the playground.

There is fantastic open green space in Queen's Park which offers tennis courts, a pitch & putt course, café and children's playground.

Queen's Park offers both underground (Bakerloo) and Overground train lines, making it easy to commute to major stations such as Euston and Baker Street.

About this property

St. Luke's Yard is a private gated development close to the heart of Queen's Park. The property was originally coach house and houses in the mews were workshops. No. 8 stands at the head of the paved drive and has amazing views down this bespoke development. The property has a patio to the front with mature planting for privacy and off road parking.

Internally the house is presented to the highest standard with central hallway with stairs to the 1st floor and double doors leading into the impressive open-plan living space with contemporary kitchen and utility room, dining area which in flows into the great entertaining space onto the patio. At ground floor level there is also a bedroom and modern guest shower room. On the first floor there is a spacious landing with pleasant seating area with skylight and built in wardrobes. There is an beautiful principal bedroom with en suite and large dressing room which can be converted back to a bedroom. There is a further double bedroom with separate family bathroom.

Tenure

Freehold

Local Authority

City Of Westminster

Energy Performance

EPC Rating = C

Viewing

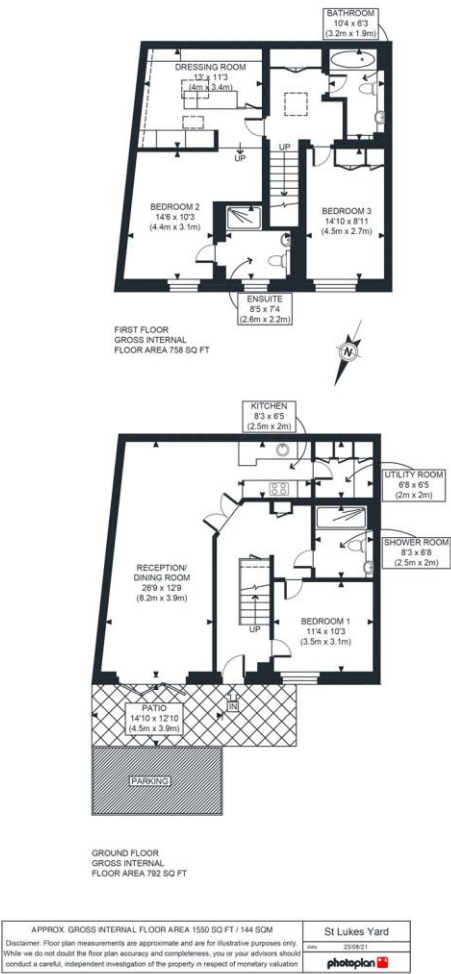
All viewings will be accompanied and are strictly by prior arrangement through Savills Maida Vale & Little Venice Office. Telephone: +44 (0) 20 3425 5600.








St. Luke's Yard, Queen's Park, London, W9
Gross Internal Area 1550 sq ft, 144 m²

Marius Nazare
Maida Vale & Little Venice
+44 (0) 20 3425 5600
emma.clowes@savills.com



Energy Efficiency Rating		
	Current	Potential
Very energy efficient - lower running costs		
(92+)		
A		
(81-91)		
B		
(69-80)		
C		
(55-68)		
D		
(39-54)		
E		
(21-38)		
F		
(1-20)		
G		
Not energy efficient - higher running costs		
England, Scotland & Wales		EU Directive 2002/91/EC 

Important Notice Savills, its clients and any joint agents give notice that 1: They are not authorised to make or give any representations or warranties in relation to the property either here or elsewhere, either on their own behalf or on behalf of their client or otherwise. They assume no responsibility for any statement that may be made in these particulars. These particulars do not form part of any offer or contract and must not be relied upon as statements or representations of fact. 2: Any areas, measurements or distances are approximate. The text, photographs and plans are for guidance only and are not necessarily comprehensive. It should not be assumed that the property has all necessary planning, building regulation or other consents and Savills have not tested any services, equipment or facilities. Purchasers must satisfy themselves by inspection or otherwise. 20200917JESS

