



Spacious two bedroom maisonette in a period property with high ceilings and private courtyard garden.

Chippenhams Road, London, W9

£650,000 Share of Freehold



- Private courtyard • Close to Notting Hill • Period features
- Good size living space • Chain free

Local Information

Maida Vale is a stunning location in west London, offering period conversions and red-brick mansion flats some of which include well-manicured communal gardens.

Paddington Recreational Ground offers open green space for the avid jogger and dog walker, as well as an athletics track, gym and 3D artificial pitch. In addition, there are a number of tennis clubs in the immediate area.

BBC Maida Vale Studios is conveniently located on a quiet residential street and hosts a number of live performances. The local area has excellent transport links from Warwick Avenue Station (Bakerloo line), Westbourne Park (Circle, Hammersmith & City lines) and great bus links into central London.

Maida Vale benefits from a wide selection of local amenities such as cafes, bars, restaurants and florists accessible via Elgin Avenue and Lauderdale Parade.

About this property

A well-presented two bedroom maisonette in a period conversion in Maida Vale. The property is arranged over two floors and offers space in excess of 750 sq. ft. of living and entertainment space. The accommodation comprises two well-proportioned bedrooms, modern bathroom, spacious reception room, guest WC and separate integrated kitchen which leads onto a private patio garden.

Tenure

Share of Freehold

Local Authority

City Of Westminster

Energy Performance

EPC Rating = D

Viewing

All viewings will be accompanied and are strictly by prior arrangement through Savills Maida Vale & Little Venice Office. Telephone: +44 (0) 20 3425 5600.

NB: Photos taken in November 2018





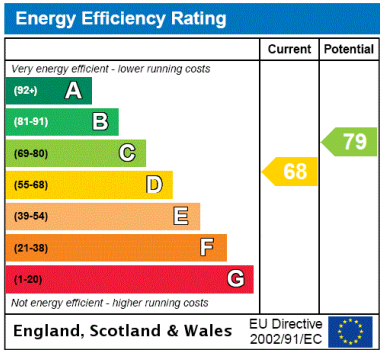
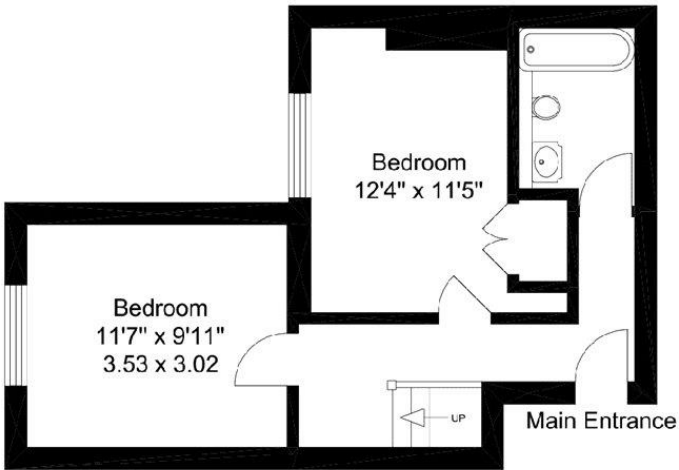
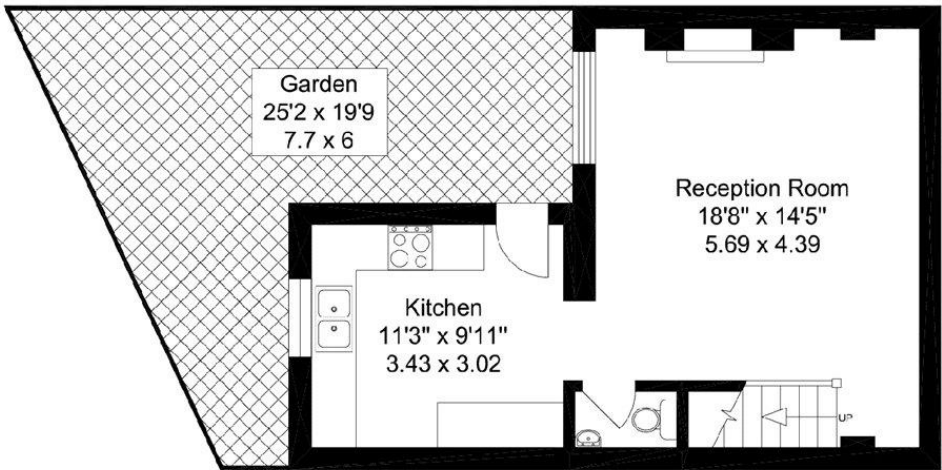
Chippenham Road, London, W9
Gross Internal Area 758 sq. ft., 70 m²

Emma Clowes
Maida Vale & Little Venice
+44 (0) 20 3425 5600
emma.clowes@savills.com

Chippenham Road, W9

70 sq m (758 sq ft)

For identification purposes only. Not to scale
© Redinventory 2018.



Important Notice Savills, its clients and any joint agents give notice that 1: They are not authorised to make or give any representations or warranties in relation to the property either here or elsewhere, either on their own behalf or on behalf of their client or otherwise. They assume no responsibility for any statement that may be made in these particulars. These particulars do not form part of any offer or contract and must not be relied upon as statements or representations of fact. 2: Any areas, measurements or distances are approximate. The text, photographs and plans are for guidance only and are not necessarily comprehensive. It should not be assumed that the property has all necessary planning, building regulation or other consents and Savills have not tested any services, equipment or facilities. Purchasers must satisfy themselves by inspection or otherwise. 20210330IVCH

