



Stylishly presented flat in a modern development

Harland House, 30-34 Woodfield Place, London, W9

£710,000 Leasehold (994 years remaining)



- Modern development • Two double bedrooms • Lift
- Private Balcony • Residents parking permit

About this property

Harland House was built in 2014 and this second floor apartment, with lift, is presented to the highest standard of decoration and style throughout. An impressive open-plan reception room with wooden flooring leads to a modern bespoke white kitchen with integrated appliances by Bosch. The bright double bedrooms both benefit from access to the private balcony and the principal bedroom has a lovely modern en-suite bathroom.

The modern Harland House development is perfectly located in Maida Vale, moments from the beautiful canal but also from the local amenities of Harrow Road, Elgin Avenue and the famous Portobello Road. Westbourne Park Tube station (Circle and Hammersmith & City lines) is around the corner, and Maida Vale (Bakerloo line) is only a short walk away.

Tenure

Leasehold (994 years remaining)

Ground rent (per annum)

Service charge (per annum)

Local Authority

City Of Westminster

Energy Performance

EPC Rating = B

Viewing

All viewings will be accompanied and are strictly by prior arrangement through Savills Maida Vale & Little Venice Office. Telephone: +44 (0) 20 3425 5600.



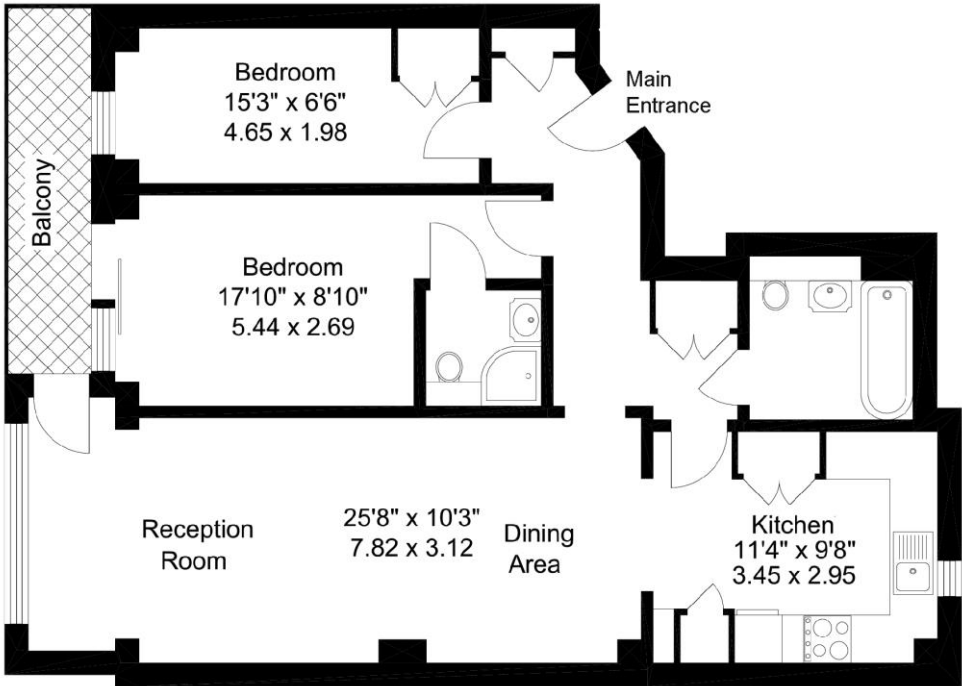
Harland House, 30-34 Woodfield Place, London, W9
Gross Internal Area 801 sq. ft., 74.4 m²

Marius Nazare
Maida Vale & Little Venice
+44 (0) 20 3425 5600
emma.clowes@savills.com


Harland House, W9

75 sq m (801 sq ft)

For identification purposes only. Not to scale
© Redinventory 2020.



Second Floor

Energy Efficiency Rating		
	Current	Potential
Very energy efficient - lower running costs		
(92+) A		
(81-91) B		
(69-80) C		
(55-68) D		
(39-54) E		
(21-38) F		
(1-20) G		
Not energy efficient - higher running costs		
	81	81
England, Scotland & Wales EU Directive 2002/91/EC 		

Important notice Savills, its clients and any joint agents give notice that 1: They are not authorised to make or give any representations or warranties in relation to the property either here or elsewhere, either on their own behalf or on behalf of their client or otherwise. They assume no responsibility for any statement that may be made in these particulars. These particulars do not form part of any offer or contract and must not be relied upon as statements or representations of fact. 2: Any areas, measurements or distances are approximate. The text, photographs and plans are for guidance only and are not necessarily comprehensive. It should not be assumed that the property has all necessary planning, building regulation or other consents and Savills have not tested any services, equipment or facilities. Purchasers must satisfy themselves by inspection or otherwise. 20200427JESS

