

A beautifully presented apartment with
access to communal gardens

Lauderdale Mansions, Lauderdale Road, London, W9

3 2 1

Guide Price £1,175,000



A beautifully presented apartment with access to communal gardens

Lauderdale Mansions, Lauderdale Road, London, W9

3 2 1

Guide Price £1,175,000



A beautifully presented apartment with access to communal gardens

Lauderdale Mansions, Lauderdale Road, London, W9



Guide Price £1,175,000



About this property

Lauderdale Mansions is a highly desirable red brick mansion block within Maida Vale with access to communal gardens.

This spacious and beautifully presented apartment is situated on the raised ground floor with high ceilings and benefits from plenty of natural light.

The apartment comprises of a generous reception room, modern well-appointed separate kitchen and dining area, a principal bedroom benefitting from ample built-in storage and en suite, a second double bedroom, separate bathroom, and a study which could also be used as a third bedroom.



A beautifully presented apartment with access to communal gardens

Lauderdale Mansions, Lauderdale Road, London, W9

3  2  1 

Guide Price £1,175,000



A beautifully presented apartment with
access to communal gardens

Lauderdale Mansions, Lauderdale Road, London, W9



Guide Price £1,175,000



Plans

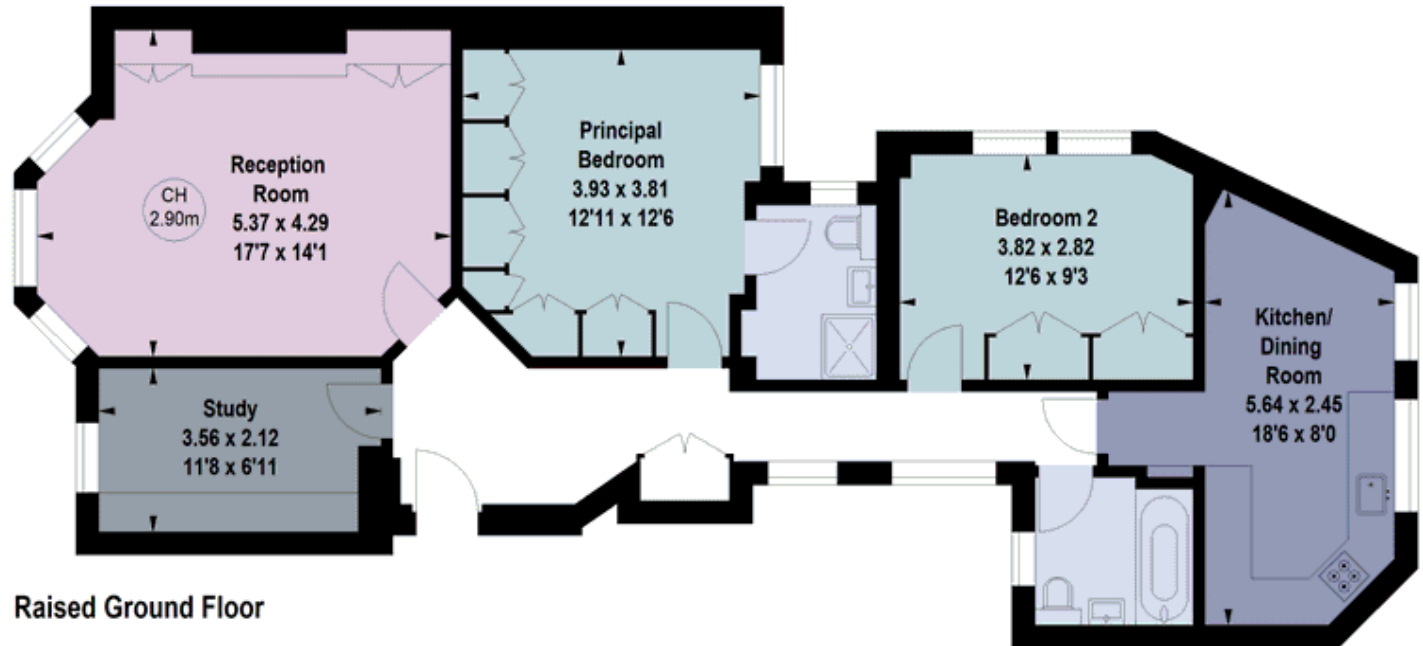
Approx. gross internal floor area

987 sq ft

Lauderdale Mansions, W9

Gross internal area (approx) 91.69 sq m / 987 sq ft

Key :
CH - Ceiling Height



Raised Ground Floor

For Identification Only. Not To Scale.

© Click London Limited

A beautifully presented apartment with access to communal gardens

Lauderdale Mansions, Lauderdale Road, London, W9



Guide Price £1,175,000



Key Information

Local Authority

Westminster

Council Tax

Band = F

Tenure

Share of Freehold
(Lease Expiry 2989)

Ground Rent

£0 per annum (reviewed every 10 years)

Service Charge

£5,000 per annum
(reviewed every 10 years)

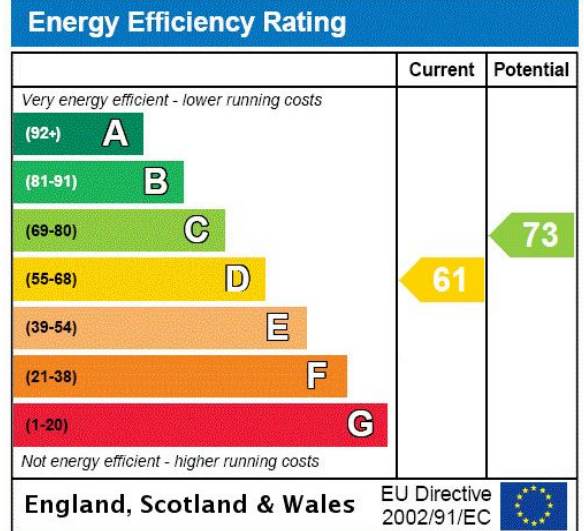
Services & Additional Information

Raised ground floor
Three bedrooms two bathrooms
Communal gardens
Plenty of natural light

EPC

EPC Rating = D

PROPERTY



A beautifully presented apartment with access to communal gardens

Lauderdale Mansions, Lauderdale Road, London, W9



Guide Price £1,175,000



Enquire



George Baskerville

Maida Vale & Little Venice

02034255600

george.baskerville@savills.com

More Information



[View on website](#)



[View Digital Brochure](#)



[Property Search](#)

Viewing strictly by appointment

Published: February 2024

Property Ref: CLI221504

powered by
FluxPro

Important Notice: Savills, its clients and any joint agents give notice that 1: They are not authorised to make or give any representations or warranties in relation to the property either here or elsewhere, either on their own behalf or on behalf of their client or otherwise. They assume no responsibility for any statement that may be made in these particulars. These particulars do not form part of any offer or contract and must not be relied upon as statements or representations of fact. 2: Any areas, measurements or distances are approximate. The text, photographs and plans are for guidance only and are not necessarily comprehensive. It should not be assumed that the property has all necessary planning, building regulation or other consents and Savills have not tested any services, equipment or facilities. Purchasers must satisfy themselves by inspection or otherwise.