



An architecturally designed upper floor two double bedroom duplex apartment with vaulted ceilings and oceans of light.

Hormead Road, London, W9

£775,000 Leasehold (119 years remaining)

savills

- Bright top floor apartment • Two double bedrooms • Good location, close to Notting Hill • Long lease 119 years
- No onward chain

### Local Information

Maida Vale is a stunning location in West London, offering period conversions and red-brick mansion flats some of which include well-manicured communal gardens. Paddington Recreational Ground offers open green space for the avid jogger and dog walker, as well as an athletics track, gym and 3D artificial pitch. In addition, there are a number of tennis clubs in the immediate area. BBC Maida Vale Studios is conveniently located on a quiet residential street and hosts a number of live performances. Hornmead Road is positioned between Maida Vale and on the outskirts of the bustling and cultural Notting Hill. The property is moments away from the Union Canal and within 0.7 miles from Portobello market. The local area has excellent transport links from Westbourne Park Station (Hammersmith and City), Paddington station and great bus links into Central London.

### About this property

Well-located within a ten minute walk of Portobello Road, this bright and spacious top floor apartment in a period conversion, has been stylishly renovated throughout with vaulted ceilings, crisply decorated in white with modern fixtures and fittings. There are two double bedrooms with the suspended principal bedroom on the top floor benefitting from large windows and skylights to allow for a double aspect and a gallery view into the sitting area. The open-plan kitchen and living room have bespoke storage, large windows and perfect entertaining space. The property is for sale with a long lease and no onward chain.

### Tenure

Leasehold (119 years remaining)

### Local Authority

City Of Westminster

### Energy Performance

EPC Rating = D

### Viewing

All viewings will be accompanied and are strictly by prior arrangement through Savills Maida Vale & Little Venice Office.

Telephone: +44 (0) 20 3425 5600.



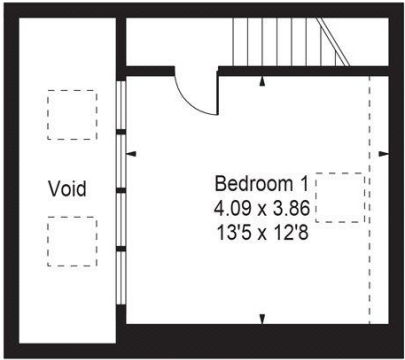




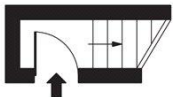
Hormead Road, London, W9  
Gross Internal Area 821 sq.ft., 76.2 m<sup>2</sup>

**Emma Clowes**  
Maida Vale & Little Venice  
**+44 (0) 20 3425 5600**  
emma.clowes@savills.com

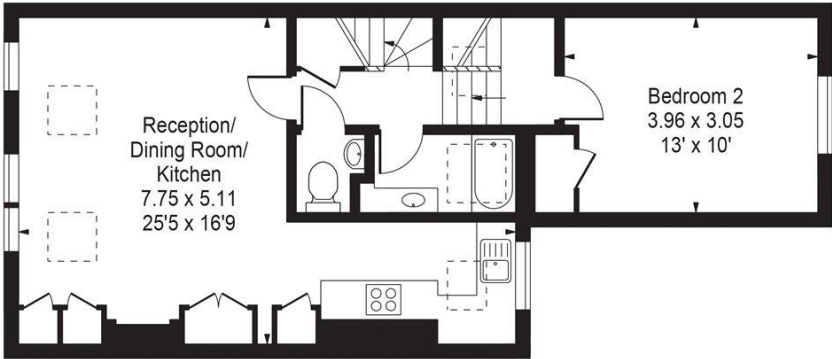
Hormead Road  
Gross Internal Area(Approx)  
Total = 76.27 Sq m / 821 Sq ft (Excluding Void)



Third Floor  
19.6 sq m / 211 sq ft



First Floor Entrance  
1.6 sq m / 17sq ft



Second Floor  
53.9 sq m / 580 sq ft

For Illustration Purposes Only - Not To Scale  
Floorplan by Humble Spy Photography Ltd.  
Produces exclusively for Savills

Energy Efficiency Rating		
	Current	Potential
Very energy efficient - lower running costs		
(92+) <b>A</b>		
(81-91) <b>B</b>		
(69-80) <b>C</b>		
(55-68) <b>D</b>	62	73
(39-54) <b>E</b>		
(21-38) <b>F</b>		
(1-20) <b>G</b>		
Not energy efficient - higher running costs		
England, Scotland & Wales		
EU Directive 2002/91/EC		

**Important Notice** Savills, its clients and any joint agents give notice that 1: They are not authorised to make or give any representations or warranties in relation to the property either here or elsewhere, either on their own behalf or on behalf of their client or otherwise. They assume no responsibility for any statement that may be made in these particulars. These particulars do not form part of any offer or contract and must not be relied upon as statements or representations of fact. 2: Any areas, measurements or distances are approximate. The text, photographs and plans are for guidance only and are not necessarily comprehensive. It should not be assumed that the property has all necessary planning, building regulation or other consents and Savills have not tested any services, equipment or facilities. Purchasers must satisfy themselves by inspection or otherwise. 20210504IVCH

