

THE HUNTING LODGE BURY HILL, HEMEL HEMPSTEAD, HERTFORDSHIRE HP1 1SR

A delightful Grade II* Listed detached house set in a tree lined no through road just 0.5 miles from the town centre



savills

THE HUNTING LODGE

BURY HILL, HP1 1SR

A DELIGHTFUL GRADE II* LISTED DETACHED HOUSE SET IN A TREE LINED NO THROUGH ROAD JUST 0.5 MILES FROM THE TOWN CENTRE

Marlowes shopping centre 0.8 miles, Hemel Hempstead mainline station 1.7 miles (London Euston from 25 minutes), A41 Bypass 1.8 miles, M1 (Junction 8) 3.6 miles, Berkhamsted 5 miles, Harpenden 8.2 miles, London Luton Airport 13.2 miles, London Heathrow Airport 24.0 miles

ACCOMMODATION

Reception hall, sitting room, dining room, kitchen/ breakfast room, utility room, cloakroom/shower room, large cellar, master bedroom with dressing room and en suite bathroom, bedroom 2 with dressing room and en suite bathroom, separate shower room, 2 second floor bedrooms, gated courtyard providing parking for 3 cars, double garage, private and secluded rear garden.

DESCRIPTION

The Hunting Lodge is one of Hemel Hempstead's historic hidden gems! Reputed to have been used on occasions by King Henry VIII back in Tudor times, this delightful family home oozes character and charm, as many of the wonderful internal architectural features still remain.

Some of these features include;

- Ornate moulded plaster ceilings to sitting room and main bedroom
- Wonderful stone fireplace
- Bread oven and cider press
- Rare sections of historic wallpaper in the master bedroom



LOCATION

Nestled behind a tall wall and mature hedgerow, The Hunting Lodge is set part way down a no through road just 0.5 miles from the bustling town centre of Hemel Hempstead. The 'Old Town' of Hemel is a lovely, part cobbled street which boasts an array of quality boutiques, shops and restaurants. The Marlowes shopping centre offers many well known high street brand names such as Debenhams, Marks & Spencer and TK Maxx.

LOCAL AUTHORITY

Dacorum Borough Council

VIEWING

Strictly by appointment with Savills

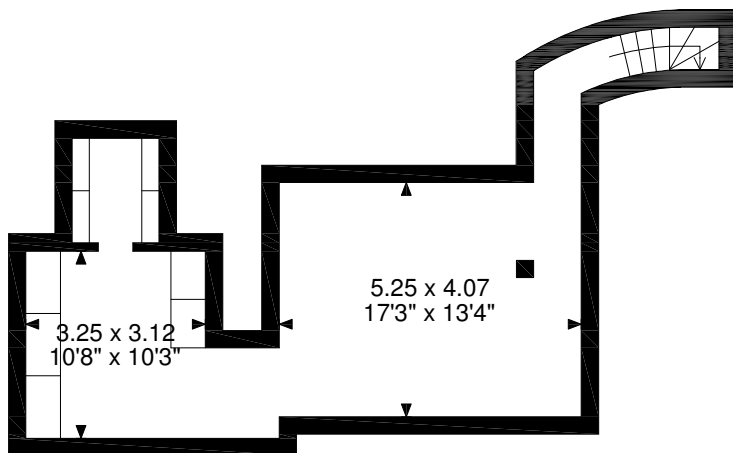
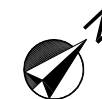
EASEMENTS, WAYLEAVES AND RIGHTS OF WAY

The property is offered for sale subject to any public or private rights of way and any easements and wayleaves, whether referred to in these particulars or not.

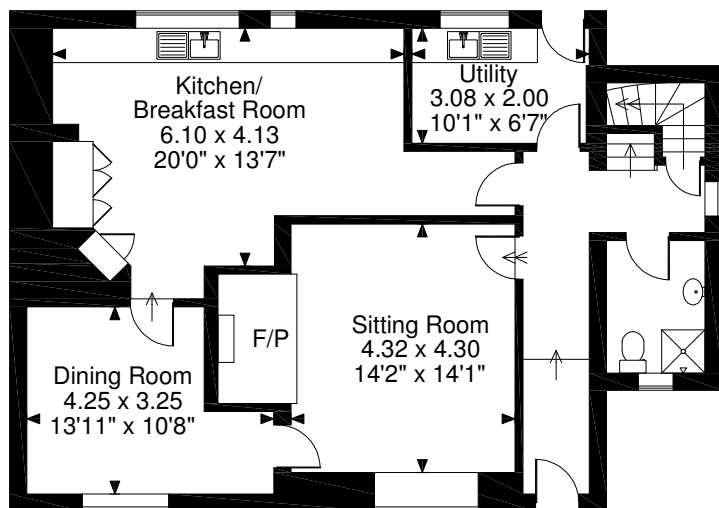
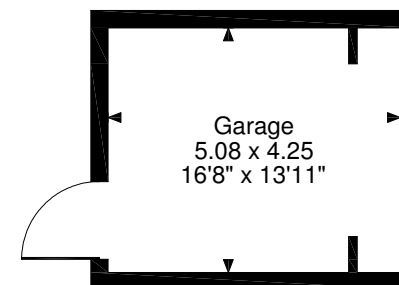
SERVICES

Mains electricity, water and gas

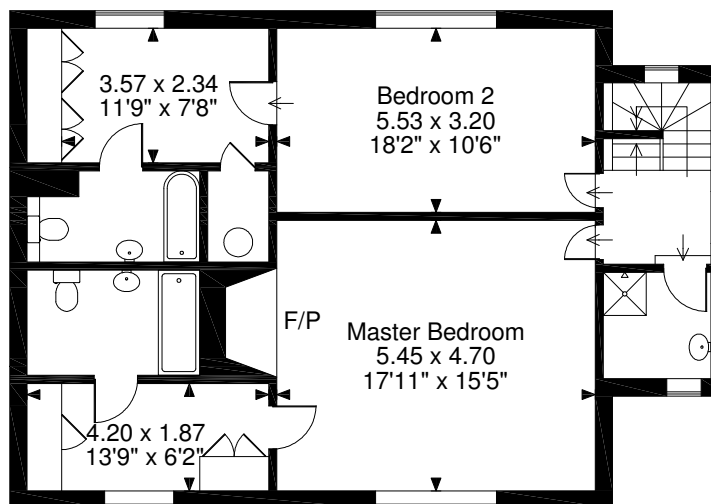
The Hunting Lodge, Hemel Hempstead
Main House gross internal area = 2,645 sq ft / 246 sq m
Garage gross internal area = 232 sq ft / 22 sq m
Total gross internal area = 2,877 sq ft / 267 sq m



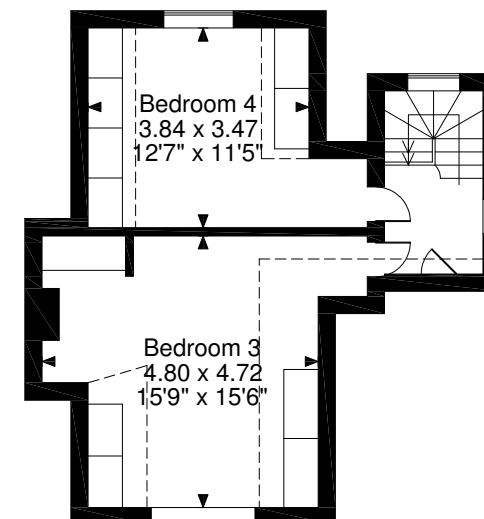
Cellar



Ground Floor



First Floor



Second Floor

FOR ILLUSTRATIVE PURPOSES ONLY - NOT TO SCALE

The position & size of doors, windows, appliances and other features are approximate only.

□ □ □ □ Denotes restricted head height

© ehouse. Unauthorised reproduction prohibited. Drawing ref. dig/8329491/NJD



SAVILLS HARPENDEN
harpenden@savills.com

01582 465000
savills.com

Savills, their clients and any joint agents give notice that: 1. They are not authorised to make or give any representations or warranties in relation to the property either here or elsewhere, either on their own behalf or on behalf of their client or otherwise. They assume no responsibility for any statement that may be made in these particulars. These particulars do not form part of any offer or contract and must not be relied upon as statements or representations of fact. 2. Any areas, measurements or distances are approximate. The text, images and plans are for guidance only and are not necessarily comprehensive. It should not be assumed that the property has all necessary planning, building regulation or other consents and Savills have not tested any services, equipment or facilities. Purchasers must satisfy themselves by inspection or otherwise. 180313DS