



A spacious detached 5 bedroom family home.

College Close, Flamstead, St. Albans, Hertfordshire, AL3

£2,800 pcm plus fees apply, Unfurnished
Available from 24.02.2021



- 5 bedrooms
- 4 reception rooms
- 2 bathrooms (1 en-suite with sauna)
- Fitted kitchen & utility room
- Conservatory
- Mature gardens (gardener included)
- Garage and off street parking

Local Information

In a quiet location backing onto a meadow in the popular village of Flamstead approximately 5.5 miles from the larger town of Harpenden with direct rail links into St Pancras International, Convenient for access to major road links M1 & M25 and Luton airport.

About this property

A spacious detached 5 bedroom family home offering versatile accommodation in good condition throughout set on a large private corner plot backing onto private conservation area, tucked away in a quiet location in the popular village of Flamstead.

Internally offering; entrance hall, principle bedroom with en suite including sauna room and mezzanine area, 4 further bedrooms, family bathroom, large spacious living room, reception room, study, conservatory, fitted kitchen, utility room, guest cloakroom.

Externally offering; mature gardens, garage & ample off street parking.

Furnishing

Unfurnished

Local Authority

Three Rivers District Council
Council Tax Band = G

Energy Performance

EPC Rating = E

Viewing

All viewings will be accompanied and are strictly by prior arrangement through Savills Harpenden Lettings Office.
Telephone: +44 (0) 1582 465 020.



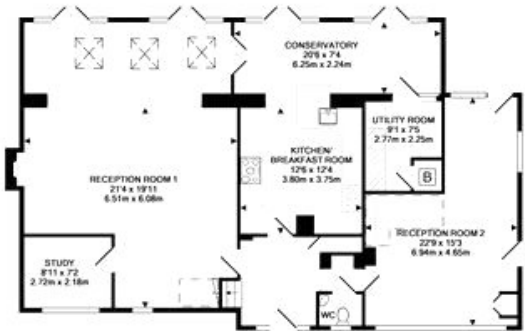


College Close, Flamstead, St. Albans, Hertfordshire, AL3
Gross Internal Area 2475 sq ft, 229.9 m²

Ryan Green
Harpenden Lettings
+44 (0) 1582 465 020
rgreen@savills.com



College Close,
Flamstead, Hertfordshire, AL3 8DJ

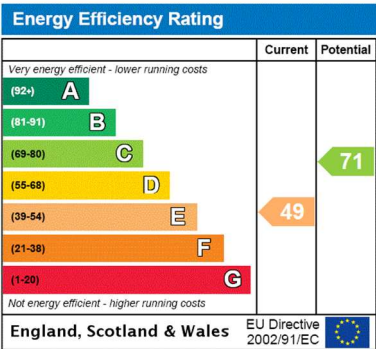


GROUND FLOOR



FIRST FLOOR

TOTAL APPROX. FLOOR AREA 2346 SQ.FT. (217.9 SQ.M.)
While every attempt has been made to ensure the accuracy of the floor plan contained here, measurements of doors, windows, rooms and any other items are approximate and no responsibility is taken for any error, omission, or mis-statement. This plan is for illustrative purposes only and should be used as such by any prospective purchaser. The services, systems and appliances shown have not been tested and no guarantee as to their operability or efficiency can be given.
Made with Metropix CQ013



Important notice Savills, their clients and any joint agents give notice that: 1. They are not authorised to make or give any representations or warranties in relation to the property either here or elsewhere, either on their own behalf or on behalf of their client or otherwise. They assume no responsibility for any statement that may be made in these particulars. These particulars do not form part of any offer or contract and must not be relied upon as statements or representations of fact. 2. Any areas, measurements or distances are approximate. The text, images and plans are for guidance only and are not necessarily comprehensive. It should not be assumed that the property has all necessary planning, building regulation or other consents and Savills have not tested any services, equipment or facilities. Prospective tenants must satisfy themselves by inspection or otherwise. Please note that the local area may be affected by aircraft noise, you should make your own enquiries regarding any noise within the area before you make any offer.

*There are different rules and fees for different tenancy types. For details of our fees and charges please go to Savills.co.uk/tenant-fees. For more detailed information read our applicant guide at savills.co.uk/applicant-guide.
Hard copy available on request. . 20210105RYGR

