



# A town house in a small development

**Vallance Place, Harpenden, Hertfordshire, AL5**

£1,200 pcm plus fees apply, Unfurnished  
Available from 30.01.2019





2 bedrooms • 1 reception room • 2 bathrooms (1 en suite) •  
Allocated parking space • Secluded rear garden

#### Local Information

On the south-east side of Harpenden within easy walking distance of local shopping facilities, the Common and golf course and train into London.

#### About this property

Well-presented town house in a delightful cul-de-sac setting. Offering; 2 bedrooms, 2 bathrooms (en-suite to master bedroom), living room, kitchen, cloakroom, secluded rear garden and two allocated parking spaces.

#### Furnishing

Unfurnished

#### Local Authority

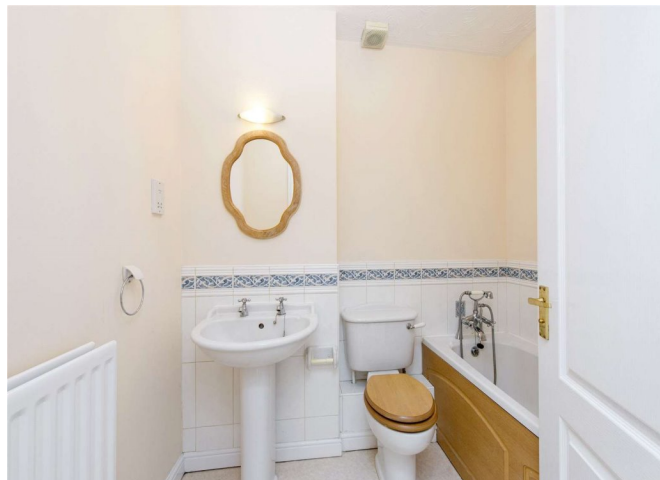
St. Albans City and District Council

#### Energy Performance

EPC Rating = C

#### Viewing

All viewings will be accompanied and are strictly by prior arrangement through Savills Harpenden Lettings Office. Telephone: +44 (0) 1582 465 020.





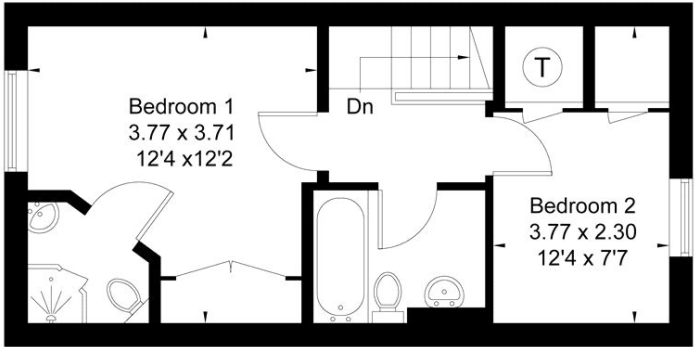
Vallance Place, Harpenden, Hertfordshire, AL5  
Gross Internal Area 683 sq ft

Simone McClellan  
Harpenden Lettings  
+44 (0) 1582 465 020  
simone.mcclellan@savills.com


 |  savills | savills.co.uk

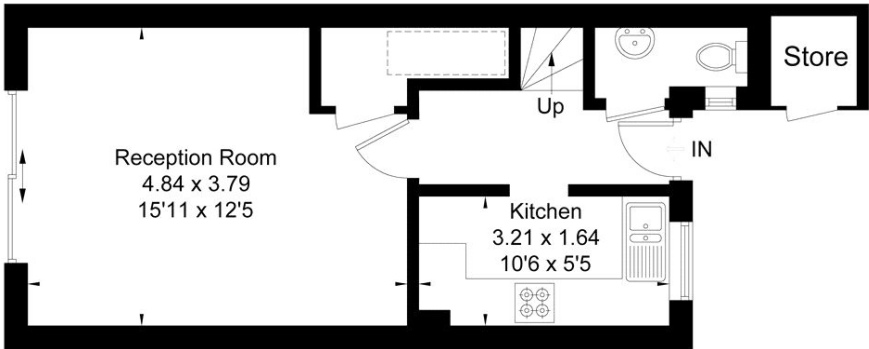
Vallance Place, Harpenden, AL5 1AX

Gross Internal Area (approx) = 63.5 sq m / 683 sq ft  
(Excluding Store)  
For identification only. Not to scale.  
© Floorplanz Ltd

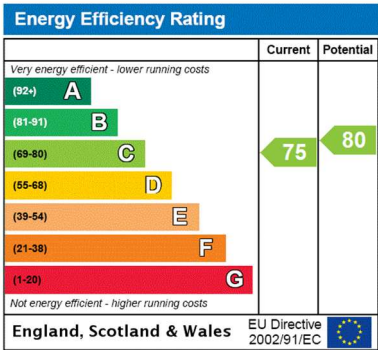


First Floor

 = Reduced headroom below 1.5m / 5'0



Ground Floor



**Important notice** Savills, their clients and any joint agents give notice that: 1. They are not authorised to make or give any representations or warranties in relation to the property either here or elsewhere, either on their own behalf or on behalf of their client or otherwise. They assume no responsibility for any statement that may be made in these particulars. These particulars do not form part of any offer or contract and must not be relied upon as statements or representations of fact. 2. Any areas, measurements or distances are approximate. The text, images and plans are for guidance only and are not necessarily comprehensive. It should not be assumed that the property has all necessary planning, building regulation or other consents and Savills have not tested any services, equipment or facilities. Prospective tenants must satisfy themselves by inspection or otherwise. Please note that the local area may be affected by aircraft noise, you should make your own enquiries regarding any noise within the area before you make any offer.

\*There are different rules and fees for different tenancy types. For details of our fees and charges to go to Savills.co.uk/tenant-fees. For more detailed information read our applicant guide at savills.co.uk/applicant-guide. Hard copy available on request. . 20200113RYGR

