



Contemporary two bedroom apartment

5 Mayflower House, Leckhampton Place, Cheltenham, Gloucestershire, GL53 0FB

Leasehold - 125 year lease from January 2016



Entrance hall • sitting/kitchen/dining room
• two bedrooms (one with en suite shower room)
• bathroom • balcony

Situation

Leckhampton Place is a secluded private development of luxury town houses and apartments just off Leckhampton Road. The location is close to the popular Leckhampton Primary School, and the Richard Pate Prep School, as well as the superb amenities in and around the Bath Road. The property also offers good access up Leckhampton Hill and out to the A46, A417, and the motorway network. Cheltenham town centre, with its wide range of excellent schools, including Cheltenham Ladies' College, St. Edwards and Dean Close is within easy reach. As well as superb educational facilities the town is well known for the many jazz, literary and music festivals that it holds as well as the cricket and National Hunt festivals.

Description

5 Mayflower House is a spacious, modern first floor apartment offering approximately 947 sq ft of accommodation. Access to the apartment is via an immaculate communal entrance with lift access and video security system. A spacious entrance hall leads to the large sitting/kitchen/dining area complete with integrated appliances and an enclosed balcony overlooking the communal gardens.

The master bedroom is spacious with an en suite shower room and built-in wardrobes. The second bedroom is also a good size and is located next to the master bathroom. There are two useful storage cupboards in the hallway, one containing the boiler. Outside there are well maintained communal gardens, an allocated parking space and visitors parking. The apartment benefits from the remainder of the new home 10 year guarantee and is offered with no onward chain.

Services

Mains water, electricity, gas and drainage. Gas fired central heating.

Local Authority

Cheltenham Borough Council.
Tel: 01242 262626.

Tenure

Leasehold – 125 year lease from January 2016

Energy Performance

A copy of the full Energy Performance Certificate is available upon request.

Viewing

Strictly by appointment with Savills.





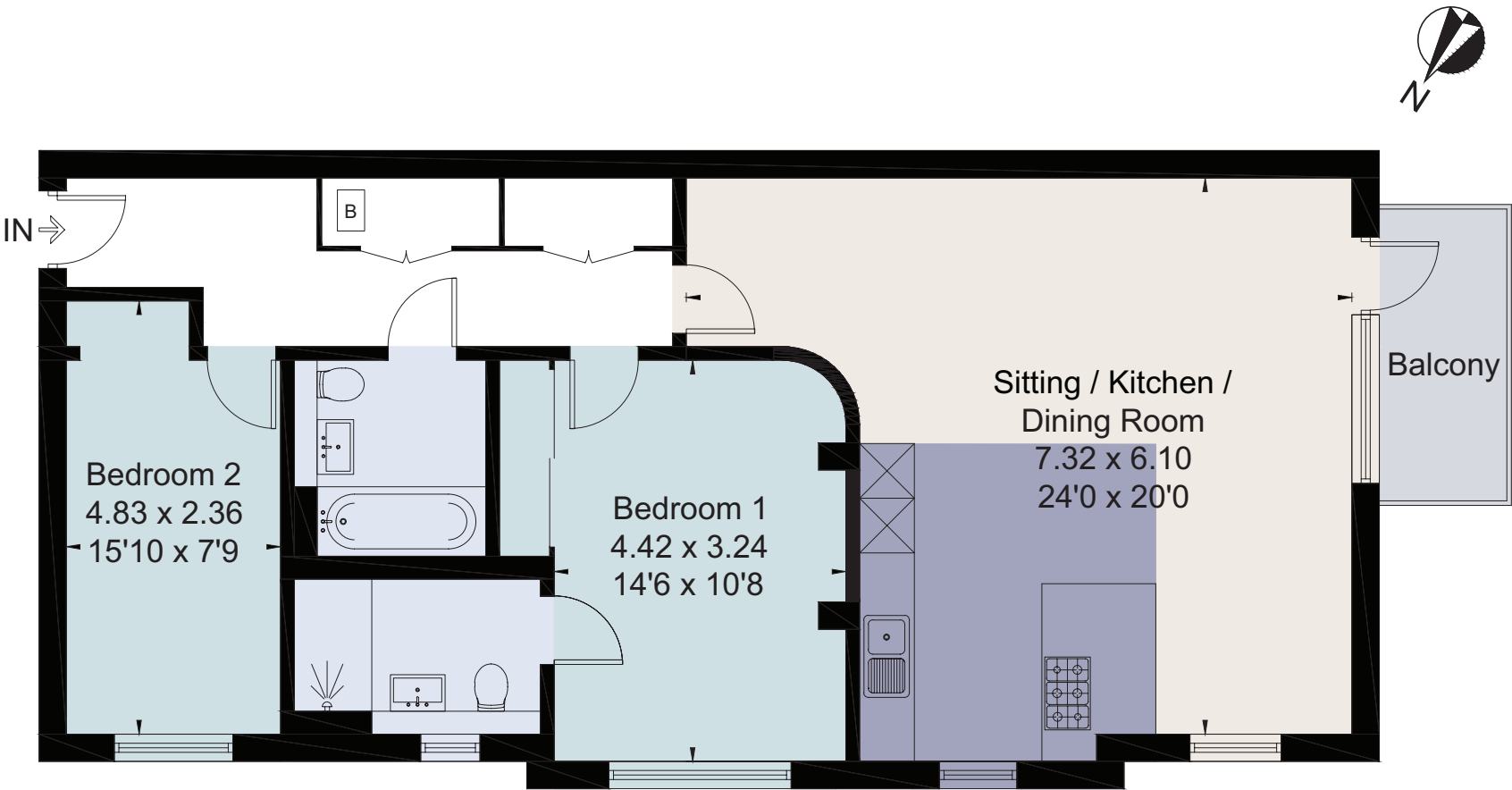
5 Mayflower House, Leckhampton Place, Cheltenham, Gloucestershire, GL53 0FB
Approximate Area 88 sq m / 947 sq ft



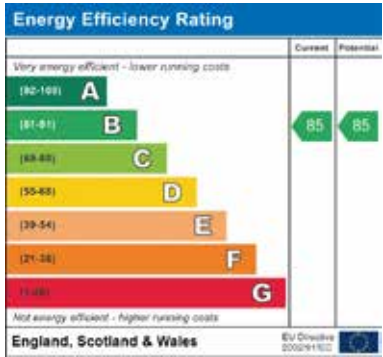
savills

savills.co.uk

Becky Brooks
Savills Cheltenham
01242 548 000
cheltenham@savills.com



For identification only. Not to scale. © 200617BB



Important notice Savills, its clients and any joint agents give notice that 1: They are not authorised to make or give any representations or warranties in relation to the property either here or elsewhere, either on their own behalf or on behalf of their client or otherwise. They assume no responsibility for any statement that may be made in these particulars. These particulars do not form part of any offer or contract and must not be relied upon as statements or representations of fact. 2: Any areas, measurements or distances are approximate. The text, photographs and plans are for guidance only and are not necessarily comprehensive. It should not be assumed that the property has all necessary planning, building regulation or other consents and Savills have not tested any services, equipment or facilities. Purchasers must satisfy themselves by inspection or otherwise. Brochure by fourwalls-group.com

