



Period terraced cottage in Montpellier

41 Montpellier Villas, Cheltenham, Gloucestershire, GL50 2XQ

Freehold



Sitting room • dining room • kitchen • shower room • two bedrooms • cellar room • courtyard garden • parking space at the rear

Situation

Montpellier Villas is a residential road located in sought after Montpellier close to the superb amenities in and around the Suffolks, Cheltenham College and the hospital. The area is sought after, being within easy walking distance of local parks and the Bath Road shopping area. Cheltenham is famed as one of the most complete Regency towns in England and historically the original and most fashionable spa.

Description

41 Montpellier Villas is a period terraced townhouse offering a wealth of character. An entrance area leads to the sitting room with plantation shutters at the window. The dining room features a fireplace and double doors to the pretty courtyard garden. The kitchen is galley style with a window to the side and a shower room is located at the rear. On the lower ground floor is a useful cellar room which is currently used as a utility area and an occasional room for guests. Upstairs, are two spacious double bedrooms, both with plantation shutters and built-in wardrobes.

Outside, there is a west-facing courtyard garden with a parking space for one vehicle.

Services

Mains water, electricity, gas and drainage. Gas central heating.

Local Authority

Cheltenham Borough Council.
Tel: 01242 262626.

Energy Performance

A copy of the full Energy Performance Certificate is available upon request.

Viewing

Strictly by appointment with Savills.





41 Montpellier Villas, Cheltenham, Gloucestershire, GL50 2XQ

Approximate Area 101.3 sq m / 1090 sq ft

Including Limited Use Area (3.6 sq m / 39 sq ft)



savills

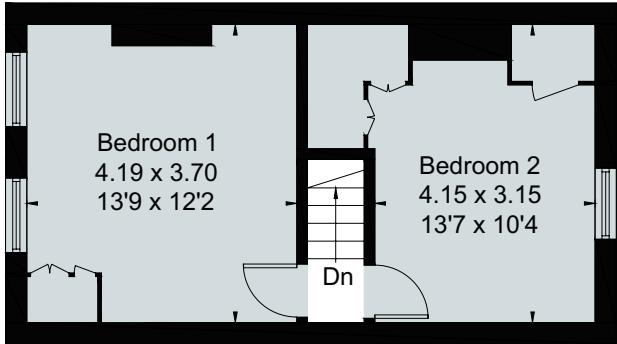
savills.co.uk

Chris Jarrett

Savills Cheltenham

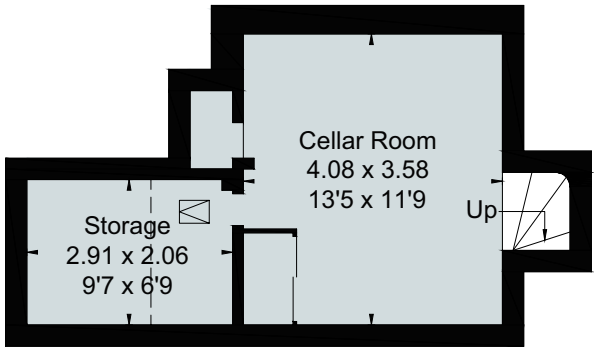
01242 548 000

cheltenham@savills.com

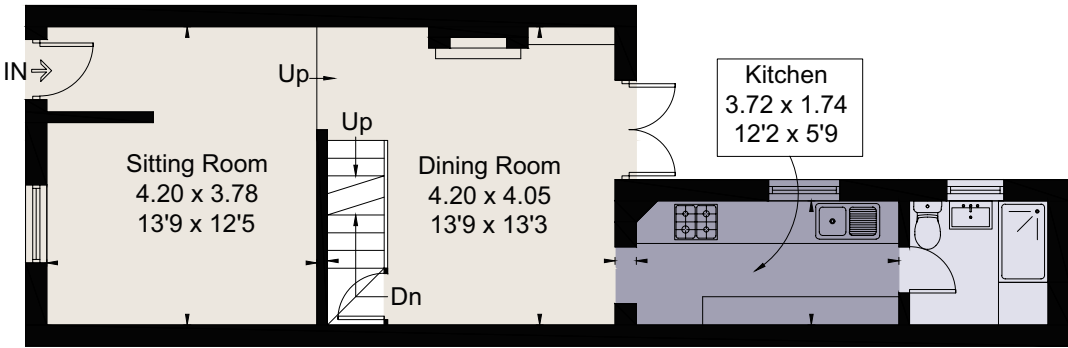


[] = Reduced head height below 1.5m

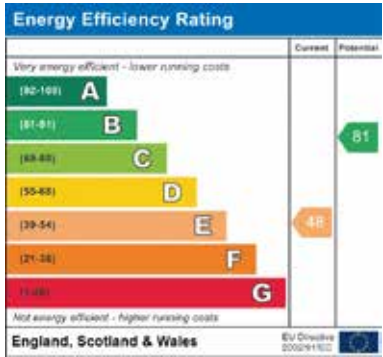
First Floor



Lower Ground Floor



Ground Floor



For identification only. Not to scale. ©191108CJ

Important notice Savills, its clients and any joint agents give notice that 1: They are not authorised to make or give any representations or warranties in relation to the property either here or elsewhere, either on their own behalf or on behalf of their client or otherwise. They assume no responsibility for any statement that may be made in these particulars. These particulars do not form part of any offer or contract and must not be relied upon as statements or representations of fact. 2: Any areas, measurements or distances are approximate. The text, photographs and plans are for guidance only and are not necessarily comprehensive. It should not be assumed that the property has all necessary planning, building regulation or other consents and Savills have not tested any services, equipment or facilities. Purchasers must satisfy themselves by inspection or otherwise. Brochure by fourwalls-group.com

