



Beautifully designed new build house

2 Apple Tree Close, Burgess Hill, West Sussex, RH15 0QR

Freehold



Hall • Sitting room • Kitchen/dining/family room • Utility room • Cloakroom • Master bedroom suite • 3 further bedrooms (2 en suite) • Family bathroom • Integrated garage • Garden • Off street parking • EPC rating B

About the property

A stunning individually designed four bedroom detached home, with traditional Sussex tile hung and brick elevations.

The property is ideally designed for modern living with a high-end 38' open plan kitchen/dining/family room with Silestone quartz surfaces, Quooker tap, integrated Siemens appliances including oven, grill, warming drawer, 5 ring induction hob with extractor and dishwasher. There is an integrated full height freezer and a fridge and separate Caple wine fridge; the utility room has space for appliances.

The dining/family room has bi-fold doors to the south-west facing terrace, creating a superb space for entertaining, and further reception space is offered by a separate sitting room with Stovax woodburner.

The master bedroom has a walk-through wardrobe and luxury en suite shower room with dual basins; all the bedrooms have bespoke fitted wardrobes. The beautifully fitted shower and bathrooms feature recessed shelving, heated towel rails and white sanitary ware. Each is individually finished with neutral shades of porcelain tiles.

The garden is mainly laid to lawn, with laurel hedging, mature trees, gravel to the side

access and a block paved drive to the front. The integrated garage has an electronically operated up and over door.

Situation

Situated in a gated private close on the north side of Burgess Hill. Local amenities include a Waitrose, a range of shops, bars and restaurants, an independent cinema, and a leisure centre. Brighton 12 miles, Gatwick 16 miles.

Rail services: Wivelsfield (½ a mile) and Burgess Hill (1.3 miles), to London, Lewes and Brighton.

Schools: There is an excellent range of state and independent schools in Mid Sussex.

Services

Gas central heating (Valliant combi boiler); NEST controlled underfloor heating to the ground floor and electric underfloor heating to all bath and shower rooms.

All mains services. Megaflo cylinder.

Energy Performance

A copy of the full Energy Performance Certificate is available upon request.

Viewing

Strictly by appointment with Savills on 01444 446000.





2 Apple Tree Close, Burgess Hill, West Sussex, RH15 0QR

Approximate Area 229.3 sq m / 2468 sq ft

Garage 17.6 sq m / 189 sq ft

Total 246.9 sq m / 2657 sq ft

Including Limited Use Area (0.3 sq m / 3 sq ft)



savills

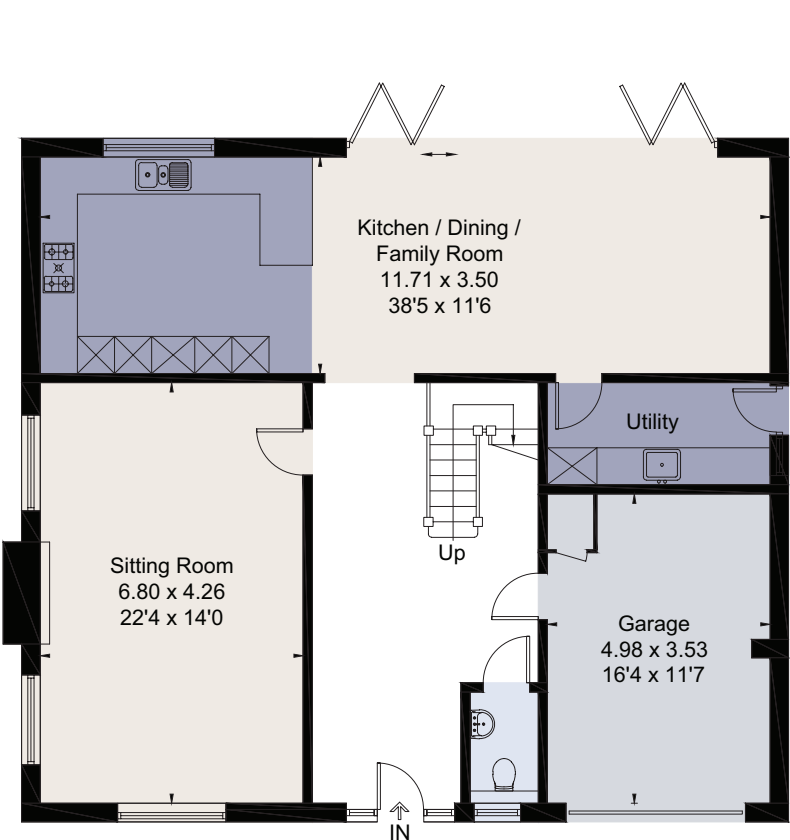
savills.co.uk

Rohan Vines

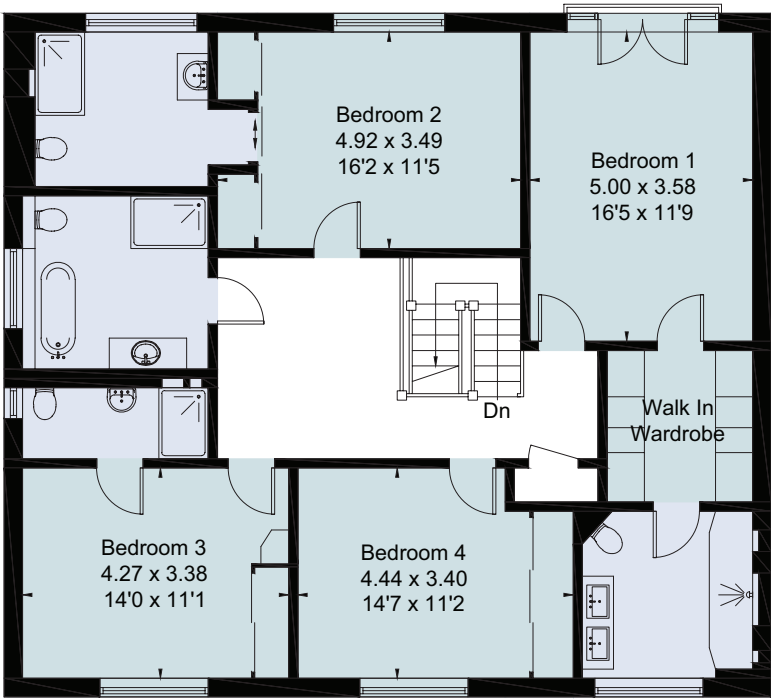
Savills Haywards Heath

01444 446000

haywardsheath@savills.com

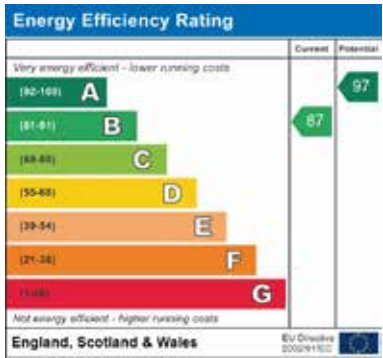


Ground Floor



First Floor

For identification only. Not to scale. © TP 01029030



Important notice Savills, its clients and any joint agents give notice that 1: They are not authorised to make or give any representations or warranties in relation to the property either here or elsewhere, either on their own behalf or on behalf of their client or otherwise. They assume no responsibility for any statement that may be made in these particulars. These particulars do not form part of any offer or contract and must not be relied upon as statements or representations of fact. 2: Any areas, measurements or distances are approximate. The text, photographs and plans are for guidance only and are not necessarily comprehensive. It should not be assumed that the property has all necessary planning, building regulation or other consents and Savills have not tested any services, equipment or facilities. Purchasers must satisfy themselves by inspection or otherwise. Brochure by fourwalls-group.com. Brochure prepared: September 2019. Photographs taken: August 2019

