



2 bedroom apartment overlooking the village square

Middle Village, Bolnore Village, Haywards Heath, West Sussex, RH16

£250,000 Leasehold



Communal and private entrance halls • Open plan sitting room and kitchen • Principal bedroom with dressing area and shower room • Bedroom 2 • Bathroom • Allocated parking space • EPC rating C

Local Information

64 Middle Village overlooks the village square in the centre of Bolnore Village, on the edge of Haywards Heath. Local Amenities: There is a mini-supermarket, hairdresser, primary school, a recreation ground and Woodside Community Centre in Bolnore Village. A regular bus service runs into Haywards Heath town centre, which has a good range of further amenities including a variety of restaurants, wine bars, high street shops and supermarkets. Comprehensive Shopping: Brighton and Crawley.

Mainline Rail Service: There are regular trains from Haywards Heath station to London Bridge/Victoria (timetable journey from 42 minutes).

About this property

64 Middle Village is modern apartment built in 2005. The property has the benefit of a pleasant outlook over the village square and is within easy reach of the village shops, school and bus service.

The accommodation is on the second floor and comprises: An L-shaped entrance hall with airing cupboard housing the boiler and hot water tank, and a large coats/storage cupboard.

Open plan sitting room and kitchen with French doors

opening to a Juliet balcony; the kitchen with a good range of units, an inset sink and drainer and appliances including a Bosch oven, four-ring gas hob with extractor over and a Hotpoint washer/dryer. There is plumbing for a dishwasher.

The principal bedroom has a walk-in dressing area with hanging rails and an en suite shower room with shower cubicle, basin, WC and heated towel rail. Bedroom 2. Bathroom with white suite comprising a bath with wall mounted shower over, separate shower cubicle, basin, WC and heated towel rail. Allocated parking space.

Tenure

The property is held on a 150 year lease from 1 January 2003, at a ground rent of £100 per annum. The service charge is currently £1,769.30 per annum (reviewed on a yearly basis), which includes buildings insurance and maintenance, and cleaning of the communal areas.

Local Authority

Mid Sussex District Council. Tax band D.

Viewing

Strictly by appointment with Savills on 01444 446000.



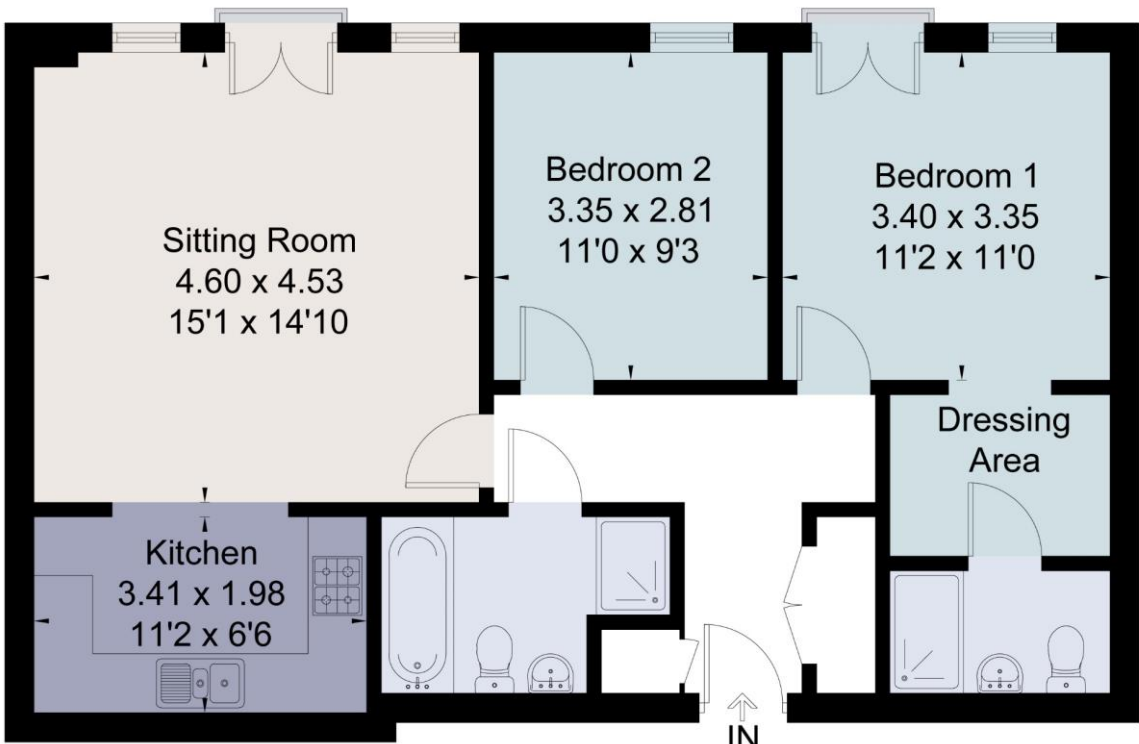


Middle Village, Bolnore Village, Haywards Heath, West Sussex, RH16
Gross Internal Area 786 sq ft, 73 m²

 OnTheMarket.com |  savills | savills.co.uk

Mark Taylor
Haywards Heath
+44 (0) 1444 446 000
mataylor@savills.com

Approximate Area = 73.0 sq m / 786 sq ft
For identification only. Not to scale.
© Fourwalls Group



Second Floor

Surveyed and drawn in accordance with the International Property Measurement Standards (IPMS 2: Residential)
fourwalls-group.com 243980

Energy Efficiency Rating		
	Current	Potential
Very energy efficient - lower running costs		
(92+) A		
(81-91) B		
(69-80) C	80	82
(55-68) D		
(39-54) E		
(21-38) F		
(1-20) G		
Not energy efficient - higher running costs		
England, Scotland & Wales		
		EU Directive 2002/91/EC

Important notice Savills, its clients and any joint agents give notice that 1: They are not authorised to make or give any representations or warranties in relation to the property either here or elsewhere, either on their own behalf or on behalf of their client or otherwise. They assume no responsibility for any statement that may be made in these particulars. These particulars do not form part of any offer or contract and must not be relied upon as statements or representations of fact. 2: Any areas, measurements or distances are approximate. The text, photographs and plans are for guidance only and are not necessarily comprehensive. It should not be assumed that the property has all necessary planning, building regulation or other consents and Savills have not tested any services, equipment or facilities. Purchasers must satisfy themselves by inspection or otherwise. 20191010JRCK

