



Superb Turner house with beautiful gardens

7 Summerhill Close, Haywards Heath, West Sussex, RH16 1QY

Freehold



Entrance hall • Sitting room • Conservatory/dining room
• Kitchen/breakfast room • Study • Utility room
• 3 bedrooms (1 en suite) • Family bathroom • Garden
• Garage • EPC rating D

About the property

This detached property is a fine Turner house, believed to date from the 1920s and extended in 2007. Thoughtfully renovated by the current owners, it offers a wealth of period details including decorative ironwork, tiled stills, wood panelled doors and a wonderful bay window with crittal French doors between the sitting room and the conservatory/dining room. The kitchen/breakfast room has granite surfaces, a good range of wood cabinets, a Rangemaster stove and a central island with breakfast bar.

On the first floor are three bedrooms, one with an en suite wet room, and a family bathroom.

Outside, the property is screened by hedging. A short driveway leads to the detached single garage. The pretty gardens have well-stocked borders, raised beds, a stone flagged terrace with pizza oven and a decked terrace.

Agent's Note

Summerhill Close is a private road. Each household contributes £115 pa maintenance.

Situation

Situated on the north side of Haywards Heath, within approximately half a mile of Haywards Heath station, direct services to London Victoria/ London Bridge from 45 minutes.

Comprehensive shopping: Lewes (10 miles) and Brighton (14.5 miles).

Schools: There is a good range in the area including Harlands Primary School and Warden Park Academy.

Services

Gas fired central heating.
All mains services.

Local Authority

Mid Sussex DC, council tax band F.

Energy Performance

A copy of the full Energy Performance Certificate is available upon request.

Viewing

Strictly by appointment with Savills. If there is any point which is of particular importance to you, we invite you to discuss this with us, especially before you travel to view the property.





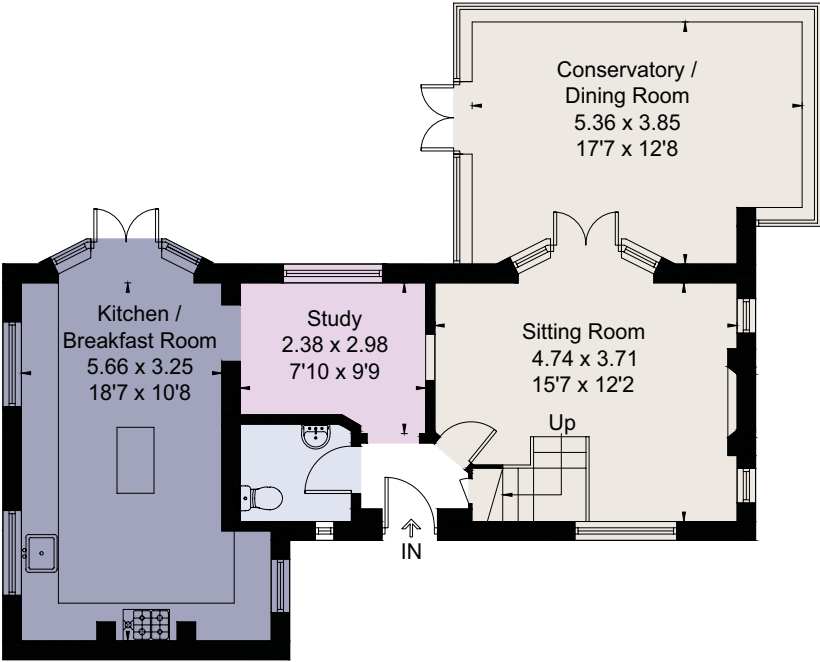
7 Summerhill Close, Haywards Heath, West Sussex, RH16 1QY
Approximate Area 130.7 sq m / 1407 sq ft
Garage 9.1 sq m / 98 sq ft
Total 139.8 sq m / 1505 sq ft
Including Limited Use Area (4.3 sq m / 46 sq ft)



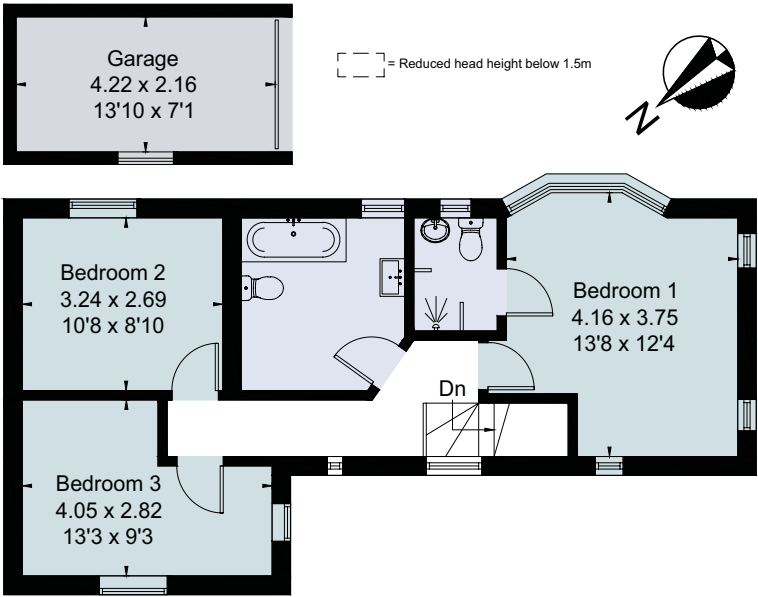
savills

savills.co.uk

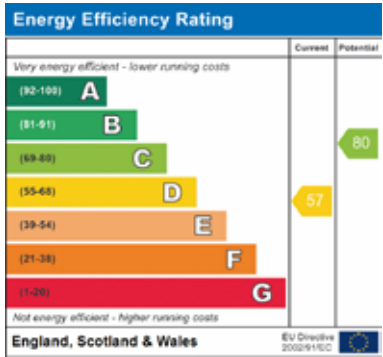
Rohan Vines
Savills Haywards Heath
01444 446000
haywardsheath@savills.com



Ground Floor



First Floor



For identification only. Not to scale. © TP91027020

Important notice Savills, its clients and any joint agents give notice that 1: They are not authorised to make or give any representations or warranties in relation to the property either here or elsewhere, either on their own behalf or on behalf of their client or otherwise. They assume no responsibility for any statement that may be made in these particulars. These particulars do not form part of any offer or contract and must not be relied upon as statements or representations of fact. 2: Any areas, measurements or distances are approximate. The text, photographs and plans are for guidance only and are not necessarily comprehensive. It should not be assumed that the property has all necessary planning, building regulation or other consents and Savills have not tested any services, equipment or facilities. Purchasers must satisfy themselves by inspection or otherwise. Brochure by fourwalls-group.com Brochure prepared: July 2019 Photographs taken: July 2019

