



A ground floor apartment in the village of Sonning

Apartment 1, The Manor House, Thames Street, Sonning, Berkshire, RG4 6UR

£400,000 Leasehold



- 2 bedroom apartment
- German made Poggenpohl Kitchen
- Set in the idyllic location of Sonning
- Close to the River Thames and Thames path
- Parking & Mooring
- No onward chain

Tenure
Leasehold

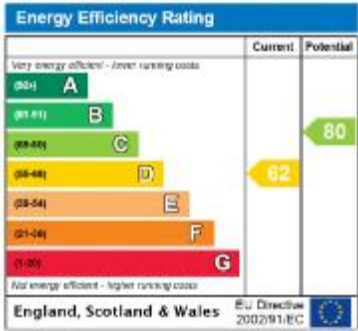
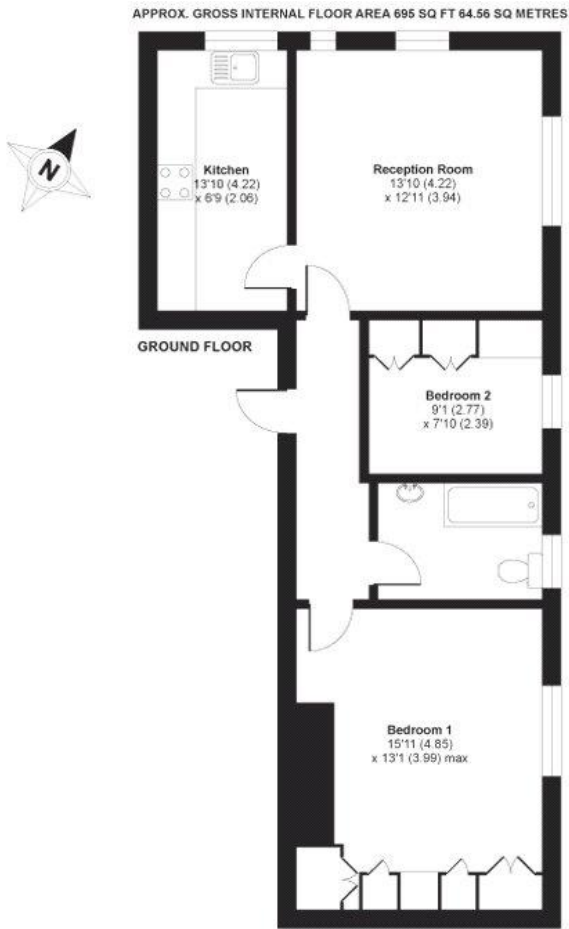
Local Authority
Reading Borough Council, Reading

Energy Performance
EPC Rating = D

Viewing
All viewings will be accompanied and are strictly by prior arrangement through Savills Henley Office.
Telephone: 01491 843 000.

Apartment 1, The Manor House, Thames Street, Sonning, Berkshire, RG4 6UR

Henley
01491 843 000
henley@savills.com



Important Notice Savills, its clients and any joint agents give notice that 1: They are not authorised to make or give any representations or warranties in relation to the property either here or elsewhere, either on their own behalf or on behalf of their client or otherwise. They assume no responsibility for any statement that may be made in these particulars. These particulars do not form part of any offer or contract and must not be relied upon as statements or representations of fact. 2: Any areas, measurements or distances are approximate. The text, photographs and plans are for guidance only and are not necessarily comprehensive. It should not be assumed that the property has all necessary planning, building regulation or other consents and Savills have not tested any services, equipment or facilities. Purchasers must satisfy themselves by inspection or otherwise. 20210428CSCS

