



# Super apartment in centre of Henley available for short let

**Tuns Lane, Henley-on-Thames, Oxfordshire, RG9**

£485 pw (£2,015 pcm) plus fees apply, Furnished

savills

- Short Let
- Beautifully presented
- Excellent location
- Central position
- Furnished

#### Local Information

The property is located in the town centre, giving excellent access to the station, shops, restaurants and pubs.

The historic riverside town of Henley-on-Thames has all major amenities including a supermarket, hospital, a fine variety of shops, pubs and restaurants. More comprehensive facilities can be found in nearby Reading and Maidenhead.

Henley railway station provides a link to the mainline railway stations in Reading and Twyford with a fast service to London, Paddington.

The M4 (J8/9) is approximately 6 miles distant providing access to Heathrow and the motorway network.

There are excellent schools in the area including Rupert House prep school, and sporting facilities include golf at a number of local courses and boating on the Thames.

#### About this property

A beautifully updated one bedroom apartment in the heart of Henley. The living space is open plan with a good size kitchen, fitted appliances and a sitting room. There is a double bedroom and a shower room.

NB: All utilities including Council tax is included in the rental

#### Furnishing

Furnished

#### Local Authority

Council Tax Band = Council Tax

#### Energy Performance

EPC Rating = E

#### Viewing

All viewings will be accompanied and are strictly by prior arrangement through Savills Henley Lettings Office.  
Telephone: +44 (0) 1491 843 002.





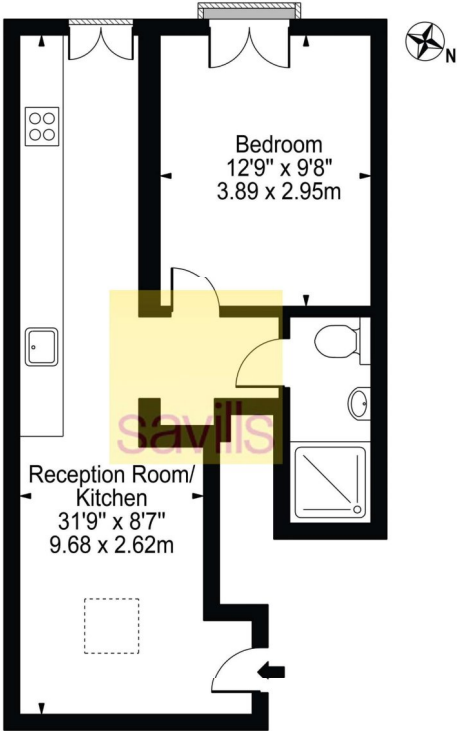


Tuns Lane, Henley-on-Thames, Oxfordshire, RG9  
Gross Internal Area 434 sq ft, 40.32 m<sup>2</sup>

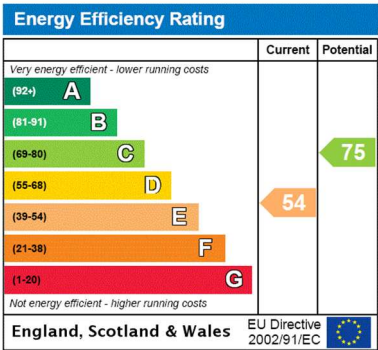
Tom Hyde  
Henley Lettings  
+44 (0) 1491 843 002  
thyde@savills.com

[onTheMarket.com](#) | [savills](#) | [savills.co.uk](#)

Tuns Lane  
Approx. Gross Internal Area 434 Sq Ft - 40.32 Sq M



This floor plan should be used as a general outline for guidance only and does not constitute in whole or in part an offer or contract.  
Any intending purchaser or lessee should satisfy themselves by inspection, searches, enquiries and full survey as to the correctness of each statement.  
Any areas, measurements or distances quoted are approximate and should not be used to value a property or be the basis of any sale or let.



**Important notice** Savills, their clients and any joint agents give notice that: 1. They are not authorised to make or give any representations or warranties in relation to the property either here or elsewhere, either on their own behalf or on behalf of their client or otherwise. They assume no responsibility for any statement that may be made in these particulars. These particulars do not form part of any offer or contract and must not be relied upon as statements or representations of fact. 2. Any areas, measurements or distances are approximate. The text, images and plans are for guidance only and are not necessarily comprehensive. It should not be assumed that the property has all necessary planning, building regulation or other consents and Savills have not tested any services, equipment or facilities. Prospective tenants must satisfy themselves by inspection or otherwise. Please note that the local area may be affected by aircraft noise, you should make your own enquiries regarding any noise within the area before you make any offer.

\*There are different rules and fees for different tenancy types. For details of our fees and charges please go to [Savills.co.uk/tenant-fees](#). For more detailed information read our applicant guide at [savills.co.uk/applicant-guide](#).  
Hard copy available on request. . 20210625ARAE

