



A modern and spacious six bedroom detached house.

Manor Wood Gate, Lower Shiplake, Henley-on-Thames, Oxfordshire, RG9

£5,100 pcm plus fees apply, Unfurnished
Available from 30.08.2021

savills

- Long Let and Short Let
- Six Bedrooms
- Three Bathrooms
- Enclosed Rear Garden
- Off Street Parking For Several Cars
- Lower Shiplake Station Within Close Proximity

Local Information

Set within the convenient location of Lower Shiplake offers great transport links into London and Reading being within moments of Lower Shiplake train station and equally well served by the road network with the A4, M4 and A404 (to the M40) close by. A five minute drive to the north is Henley-on-Thames and its bustling town centre. Reading is a 15 minute drive to the south.

About this property

A modern, bright and spacious six bedroom detached house on a peaceful private road in the delightful village of Lower Shiplake.

The ground floor of the house consists of a large double reception room with a separate study room to the side, a modern and fully integrated spacious kitchen leading into a sun lit conservatory with direct access into the rear garden and a good sized separate family room to the front of the property. Also on the ground floor is a W.C and cloak room.

On the first floor is a delightful master bedroom suite featuring an en suite bathroom and a dressing room space. There are also a further three double bedrooms a family bathroom and a large first floor landing with ample space for furnishings.

To the second floor are two further large double bedrooms and a further family bathroom.

The rear garden is landscaped with a mixture of mature shrubs, flowers and well tended lawn and is enclosed.

To the front is a well tended lawn and off street parking for three cars. A professional gardener is included in the rent (lawn mowing is not included).

Furnishing

Unfurnished

Local Authority

South Oxfordshire District Council
Council Tax Band = H

Energy Performance

EPC Rating = D

Viewing

All viewings will be accompanied and are strictly by prior arrangement through Savills Henley Lettings Office.
Telephone: +44 (0) 1491 843 002.





Manor Wood Gate, Lower Shiplake, Henley-on-Thames, Oxfordshire, RG9
Gross Internal Area 3,741 sq ft, 348 m²

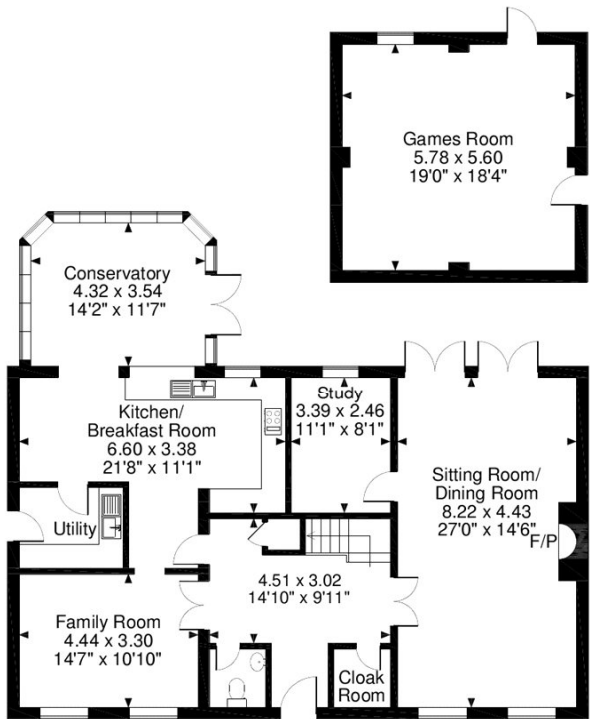
Tom Hyde
Henley Lettings
+44 (0) 1491 843 002
thyde@savills.com



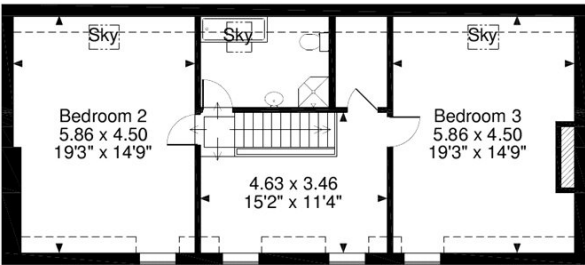
savills

savills.co.uk

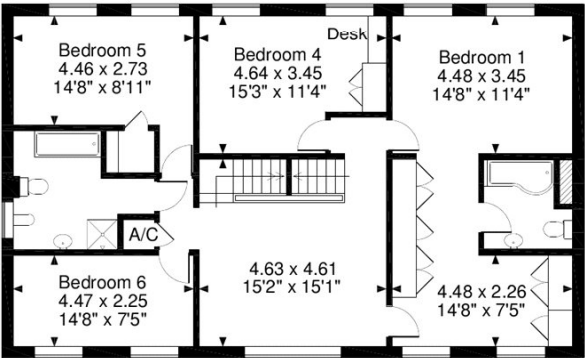
Manor Wood Gate, Henley-On-Thames
Main House gross internal area = 3,393 sq ft / 316 sq m
Garage gross internal area = 348 sq ft / 32 sq m
Total gross internal area = 3,741 sq ft / 348 sq m



Ground Floor

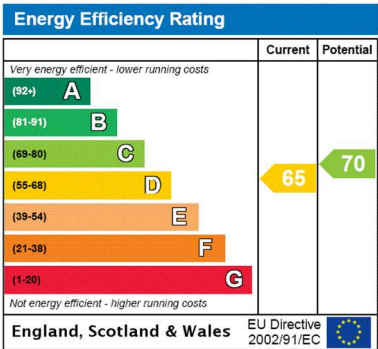


Second Floor



First Floor

FOR ILLUSTRATIVE PURPOSES ONLY - NOT TO SCALE
The position & size of doors, windows, appliances and other features are approximate only.
□ □ □ □ Denotes restricted head height
© ehouse. Unauthorised reproduction prohibited. Drawing ref. dig/8290262/JPN



Important notice Savills, their clients and any joint agents give notice that: 1. They are not authorised to make or give any representations or warranties in relation to the property either here or elsewhere, either on their own behalf or on behalf of their client or otherwise. They assume no responsibility for any statement that may be made in these particulars. These particulars do not form part of any offer or contract and must not be relied upon as statements or representations of fact. 2. Any areas, measurements or distances are approximate. The text, images and plans are for guidance only and are not necessarily comprehensive. It should not be assumed that the property has all necessary planning, building regulation or other consents and Savills have not tested any services, equipment or facilities. Prospective tenants must satisfy themselves by inspection or otherwise. Please note that the local area may be affected by aircraft noise, you should make your own enquiries regarding any noise within the area before you make any offer.

*There are different rules and fees for different tenancy types. For details of our fees and charges please go to Savills.co.uk/tenant-fees. For more detailed information read our applicant guide at savills.co.uk/applicant-guide.
Hard copy available on request. . 20210602ARAE

