



# An attractive cottage in a sought after rural village

**Skirmett, Henley-On-Thames, Oxfordshire, RG9**

£1,950 pcm plus fees apply, Unfurnished  
Available from 29.01.2020





Character cottage • Beautiful village • Stunning views • Garden  
• Two garages for storage

#### Local Information

Set in a desirable village location in one of the prettiest valleys in the Oxfordshire countryside, with excellent access to Henley-on-Thames, Marlow, Oxford and London via the M40 or M4.

#### About this property

A lovely cottage in a much loved village with stunning outlook over the countryside. From the entrance hall is a cloakroom with w/c, a sitting room with wood burner and doors to the garden, a dining room and a study area. The kitchen is a good size and overlooks the rear garden and fields beyond.

To the first floor are two double bedrooms, a single bedroom and a family bathroom. There is some eaves storage.

There are two garages, one which would be suitable for a small car, and an attractive rear garden backing on to fields. There is a gated, gravel driveway to the front.

#### Furnishing

Unfurnished

#### Local Authority

Wycombe District Council, High Wycombe

#### Energy Performance

EPC Rating = E

#### Viewing

All viewings will be accompanied and are strictly by prior arrangement through Savills Henley Lettings Office.  
Telephone: +44 (0) 1491 843 002.



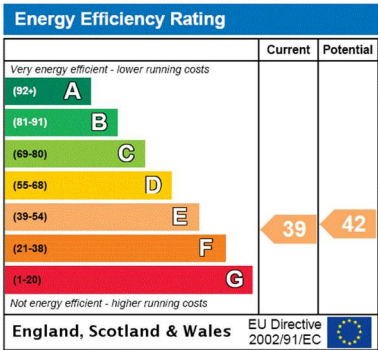
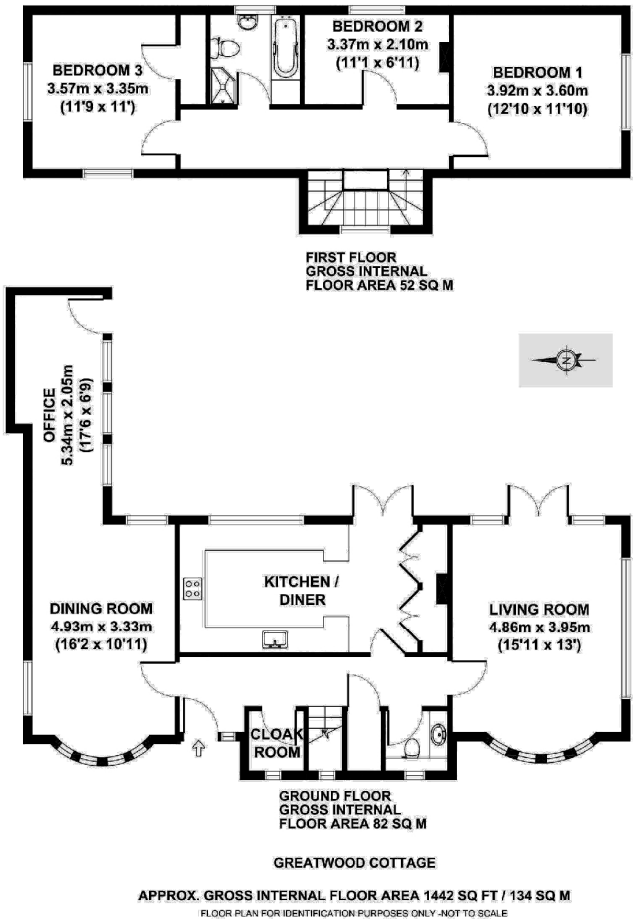




Skirmett, Henley-On-Thames, Oxfordshire, RG9  
Gross Internal Area 1,442 sq ft, 134 m²

Charlie Knapp  
Henley Lettings  
+44 (0) 1491 843 002  
cknapp@savills.com

 |  savills | savills.co.uk



**Important notice** Savills, their clients and any joint agents give notice that: 1. They are not authorised to make or give any representations or warranties in relation to the property either here or elsewhere, either on their own behalf or on behalf of their client or otherwise. They assume no responsibility for any statement that may be made in these particulars. These particulars do not form part of any offer or contract and must not be relied upon as statements or representations of fact. 2. Any areas, measurements or distances are approximate. The text, images and plans are for guidance only and are not necessarily comprehensive. It should not be assumed that the property has all necessary planning, building regulation or other consents and Savills have not tested any services, equipment or facilities. Prospective tenants must satisfy themselves by inspection or otherwise. Please note that the local area may be affected by aircraft noise, you should make your own enquiries regarding any noise within the area before you make any offer.

\*There are different rules and fees for different tenancy types. For details of our fees and charges to go to Savills.co.uk/tenant-fees. For more detailed information read our applicant guide at savills.co.uk/applicant-guide. Hard copy available on request. . 20191206ARAE

