



A spectacular newly built three bedroom luxury penthouse.

Princes Park Apartments South, 52 Prince Of Wales Road, Kentish Town, London, NW5

£875 pw (£3,791.67 pcm) plus fees apply, Unfurnished
Available from 20.11.2020



- Open-plan reception room
- Kitchen
- Dining area
- Principle bedroom suite with shower room
- Two further bedrooms
- Bathroom
- Large roof terrace

Local Information

Kentish Town offers a vivid mix of urban vibrancy and pastoral peace, located in poll position between cool Camden Town and airy Hampstead Heath and Regent's Park.

For transport links Kentish Town Underground Station (Northern Line) is approximately 0.6 miles away and Kentish Town West Overground is approximately 0.1m distant.

About this property

A beautiful penthouse in excess of 1,150 sq ft with under floor heating and plenty of natural light throughout. The property also offers floor to ceiling windows, lift access, concierge services and underground parking.

The penthouse comprises an open-plan kitchen with a bright reception room and dining area. Accessible via the reception room are doors leading out on to a spacious terrace with stunning panoramic views over Hampstead and London's skyline. There is a well-proportioned principle en suite with shower room, two further bedrooms and a bathroom.

Viewings are highly recommended.

Furnishing

Unfurnished

Local Authority

Council Tax Band = F

Energy Performance

EPC Rating = B

Viewing

All viewings will be accompanied and are strictly by prior arrangement through Savills Hampstead Lettings Office. Telephone: +44 (0) 20 7472 5030.

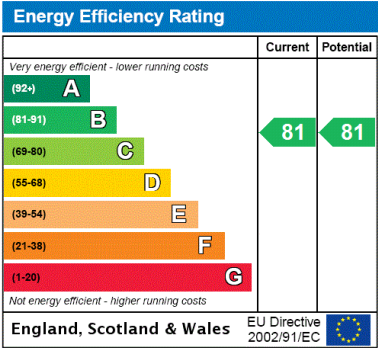
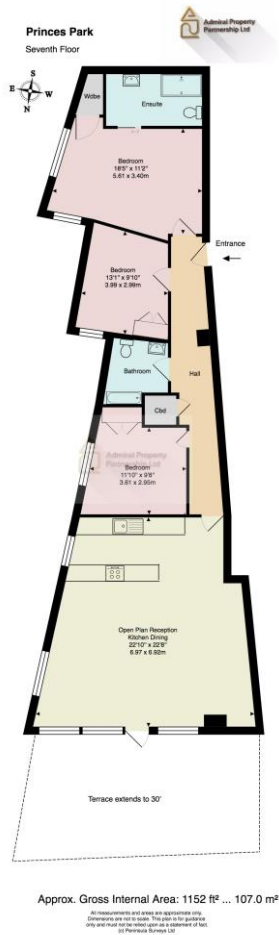




Princes Park Apartments South, 52 Prince Of Wales Road, Kentish Town, London, NW5
Gross Internal Area 1152 sq ft, 107 m²

Xavier Dias
Hampstead Lettings
+44 (0) 20 7472 5030
xavier.dias@savills.com

 |  savills | savills.co.uk



Important notice Savills, their clients and any joint agents give notice that: 1. They are not authorised to make or give any representations or warranties in relation to the property either here or elsewhere, either on their own behalf or on behalf of their client or otherwise. They assume no responsibility for any statement that may be made in these particulars. These particulars do not form part of any offer or contract and must not be relied upon as statements or representations of fact. 2. Any areas, measurements or distances are approximate. The text, images and plans are for guidance only and are not necessarily comprehensive. It should not be assumed that the property has all necessary planning, building regulation or other consents and Savills have not tested any services, equipment or facilities. Prospective tenants must satisfy themselves by inspection or otherwise. Please note that the local area may be affected by aircraft noise, you should make your own enquiries regarding any noise within the area before you make any offer.

*There are different rules and fees for different tenancy types. For details of our fees and charges please go to [Savills.co.uk/tenant-fees](https://www.savills.co.uk/tenant-fees). For more detailed information read our applicant guide at [savills.co.uk/applicant-guide](https://www.savills.co.uk/applicant-guide).
Hard copy available on request. . 20201002LCCY

