



A three double bedroom apartment set on this quiet tree-lined residential street in Hampstead.

**Maresfield Gardens, Hampstead, London, NW3**

£692 pw (£2,998 pcm) plus fees apply, Unfurnished  
Available now



- 3 bedrooms
- 2 bathrooms
- 1 reception room
- Lateral apartment
- Quiet Hampstead location

#### Local Information

Maresfield Gardens is ideally situated for access for both the Jubilee Line and Metropolitan Line (at both Swiss Cottage and Finchley Road tube station), Finchley Road & Frognal (Overground train) as well as the many local schools. Charming Hampstead village and stylish Belsize Park are within walking distance, as well as the amenities of the O2 Centre.

#### About this property

A three double bedroom apartment on this quiet, tree-lined residential street in Hampstead conveniently located for both Finchley Road tube station, O2 Centre and the shops and transport of Hampstead High Street. The property boasts high ceilings, is neutrally decorated throughout and comprises 3 bedrooms, 2 modern bathrooms (one en suite) and a fully equipped kitchen.

#### Furnishing

Unfurnished

#### Local Authority

London Borough Of Camden  
Council Tax Band = G

#### Energy Performance

EPC Rating = D

#### Viewing

All viewings will be accompanied and are strictly by prior arrangement through Savills Hampstead Lettings Office.  
Telephone: +44 (0) 20 7472 5030.



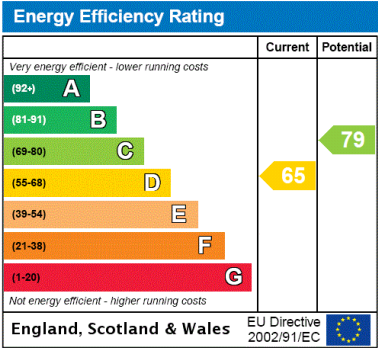
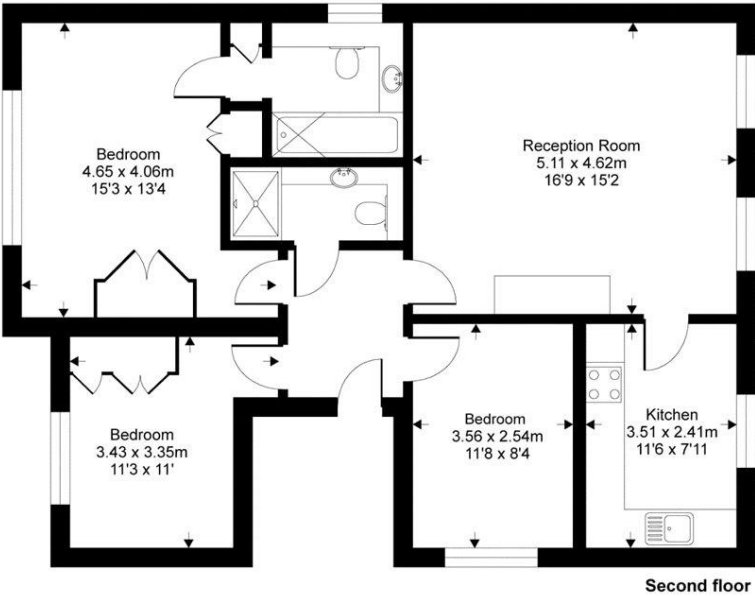




Maresfield Gardens, Hampstead, London, NW3  
Gross Internal Area 912 sq ft, 84.7 m²

Xavier Dias  
Hampstead Lettings  
+44 (0) 20 7472 5030  
xavier.dias@savills.com

Maresfield Gardens, London, NW3  
Gross internal floor area (approx):  
84.7 sq m / 912 sq ft  
For Identification only - Not to scale  
Niche Communications



**Important notice** Savills, their clients and any joint agents give notice that: 1. They are not authorised to make or give any representations or warranties in relation to the property either here or elsewhere, either on their own behalf or on behalf of their client or otherwise. They assume no responsibility for any statement that may be made in these particulars. These particulars do not form part of any offer or contract and must not be relied upon as statements or representations of fact. 2. Any areas, measurements or distances are approximate. The text, images and plans are for guidance only and are not necessarily comprehensive. It should not be assumed that the property has all necessary planning, building regulation or other consents and Savills have not tested any services, equipment or facilities. Prospective tenants must satisfy themselves by inspection or otherwise. Please note that the local area may be affected by aircraft noise, you should make your own enquiries regarding any noise within the area before you make any offer.

\*There are different rules and fees for different tenancy types. For details of our fees and charges please go to Savills.co.uk/tenant-fees. For more detailed information read our applicant guide at savills.co.uk/applicant-guide.  
Hard copy available on request. . 20200930LCCY

