



A well-proportioned three bedroom period house in  
the Suburb.

**Willifield Way, London, NW11**

£950,000 Freehold

**savills**



**Attractive period cottage • Three beds with potential to extend • Lovely rear garden • Very close to Temple Fortune • Desirable position in the Suburb**

#### **About this property**

This attractive cottage house retains an immense amount of period charm and boast a large wonderful rear garden. The property comprises a kitchen, reception room and a guest cloakroom on the ground floor and has three generously proportioned bedrooms as well as a bathroom on the first floor.

#### **Local Information**

Situated on the south side of the suburb, this property is conveniently located for the shops, cafes and restaurants of Temple Fortune, as well as the green open spaces of Hampstead Heath Extension and Bigwood.

Golders Green Underground (Northern Line) and bus station is approximately 1.2 miles away.

#### **Tenure**

Freehold

#### **Local Authority**

London Borough of Barnet

#### **Energy Performance**

EPC Rating = D

#### **Viewing**

All viewings will be accompanied and are strictly by prior arrangement through Savills Hampstead Office. Telephone: +44 (0) 20 7472 5000.







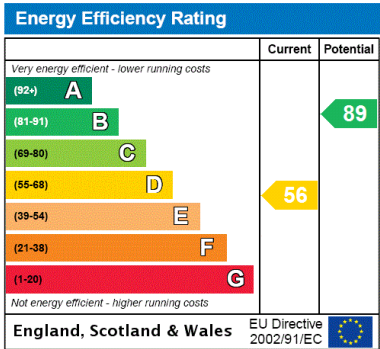
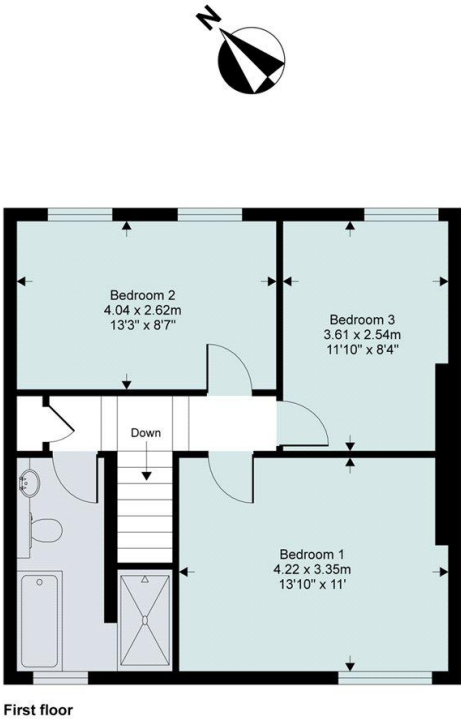
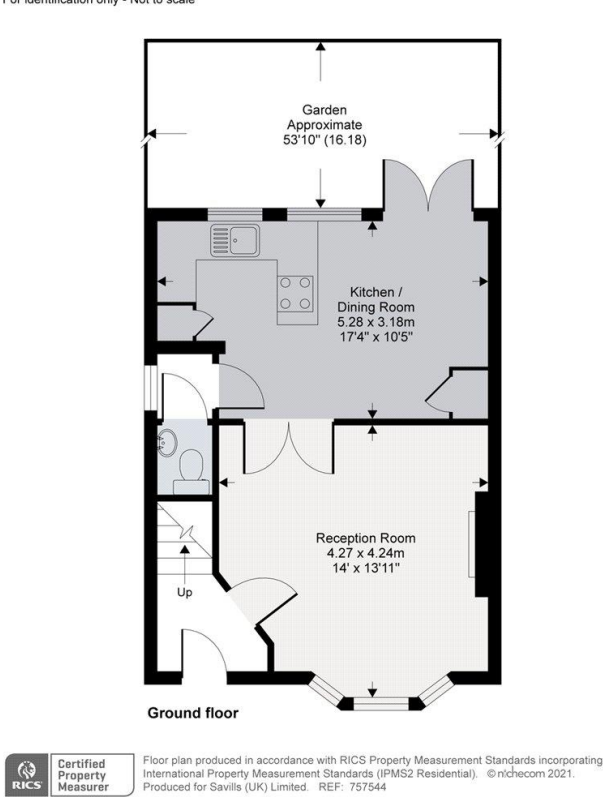


Willifield Way, London, NW11  
Gross Internal Area 914 sq ft, 85 m<sup>2</sup>

James Diaper  
Hampstead  
+44 (0) 20 7472 5000  
jdiaper@savills.com

Willifield Way, London, NW11 6YD

Approximate Area = 914 sq ft / 85 sq m  
For identification only - Not to scale



**Important Notice** Savills, its clients and any joint agents give notice that 1: They are not authorised to make or give any representations or warranties in relation to the property either here or elsewhere, either on their own behalf or on behalf of their client or otherwise. They assume no responsibility for any statement that may be made in these particulars. These particulars do not form part of any offer or contract and must not be relied upon as statements or representations of fact. 2: Any areas, measurements or distances are approximate. The text, photographs and plans are for guidance only and are not necessarily comprehensive. It should not be assumed that the property has all necessary planning, building regulation or other consents and Savills have not tested any services, equipment or facilities. Purchasers must satisfy themselves by inspection or otherwise. 20210813AYPT

