



Semi-detached Freehold house in the heart of Highgate with a garden.

Winchester Place, Highgate, London, N6

£1,200,000 Freehold



Investment rental yield • Freehold house • Further development potential • Highly desirable location • Close to Waterlow Park

About this property

Currently, divided as five self-contained flats. This property comprises three one bed apartments, two studio apartments as well as a rear garden and garage. The property offers an excellent opportunity for investors for development and rental yields.

Local Information

The property is perfectly located near both primary and secondary schools. It is in proximity from six bus routes and situated between Highgate and Archway Underground stations (Northern Line), both approximately 0.5m away.

Tenure

Freehold

Local Authority

London Borough Of Haringey

Energy Performance

Flat 1 EPC Rating = D, Flat 2 EPC Rating = E, Flat 3 EPC Rating = D, Flat 4 EPC Rating = D, Flat 5 EPC Rating = E

Viewing

All viewings will be accompanied and are strictly by prior arrangement through Savills Hampstead Office.

Telephone: +44 (0) 20 7472 5000.

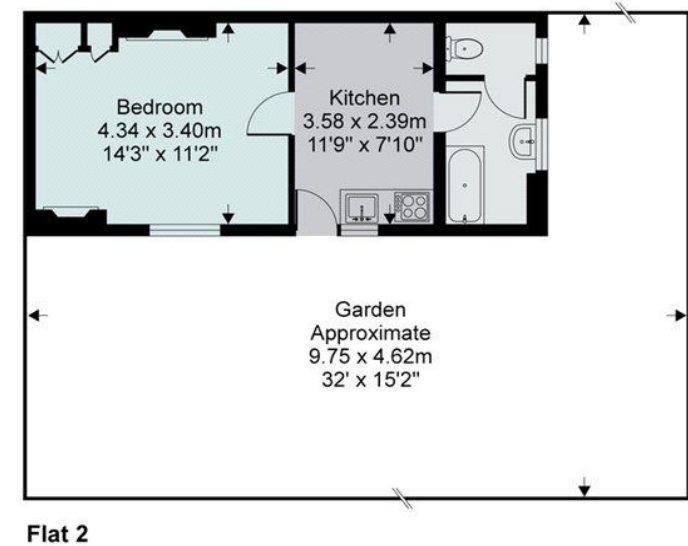
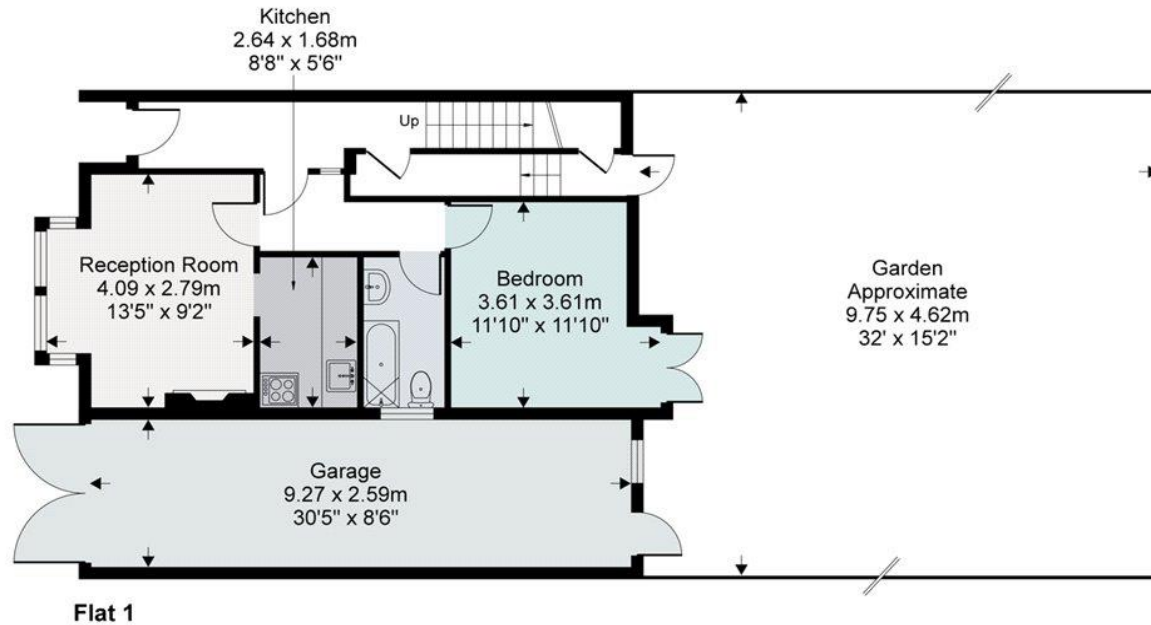
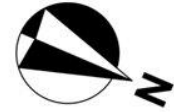




Winchester Place, London, N6 5HJ

Approximate Area = 2412 sq ft / 224.1 sq m (includes garage)

For identification only - Not to scale



Floor plan produced in accordance with RICS Property Measurement Standards incorporating International Property Measurement Standards (IPMS2 Residential). © n/checom 2021. Produced for Savills (UK) Limited. REF: 763447

Winchester Place, Highgate, London, N6
Gross Internal Area 2412 sq ft, 224.1 m²

James Diaper
Hampstead
+44 (0) 20 7472 5000
jdiaper@savills.com



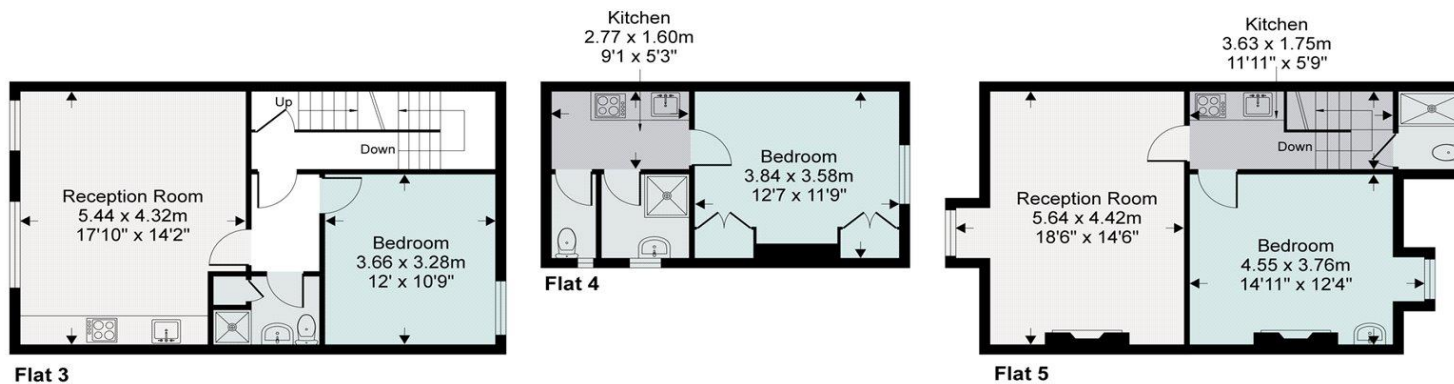
savills

savills.co.uk

Winchester Place, London, N6 5HJ

Approximate Area = 2412 sq ft / 224.1 sq m (includes garage)

For identification only - Not to scale



Floor plan produced in accordance with RICS Property Measurement Standards incorporating International Property Measurement Standards (IPMS2 Residential). © nichecom 2021. Produced for Savills (UK) Limited. REF: 763447

Important Notice Savills, its clients and any joint agents give notice that 1: They are not authorised to make or give any representations or warranties in relation to the property either here or elsewhere, either on their own behalf or on behalf of their client or otherwise. They assume no responsibility for any statement that may be made in these particulars. These particulars do not form part of any offer or contract and must not be relied upon as statements or representations of fact. 2: Any areas, measurements or distances are approximate. The text, photographs and plans are for guidance only and are not necessarily comprehensive. It should not be assumed that the property has all necessary planning, building regulation or other consents and Savills have not tested any services, equipment or facilities. Purchasers must satisfy themselves by inspection or otherwise. 20210908AYPT

