



A fabulous three bedroom garden maisonette  
with Freehold ownership.

**Pilgrims Lane, London, NW3**

£2,800,000 Freehold

savills



**Freehold maisonette has a house feel with its own front door. • Incredible finish throughout with a thoughtful layout. • All three bedrooms are en suite. • Private front and rear gardens. • Private side storage/passage • Price includes Freehold rights. • Highly desirable location in Hampstead Village.**

#### About this property

An outstanding period maisonette set over three floors occupying a highly sought after location near Hampstead Heath. The apartment is offered as part of the Freehold sale and has been fully renovated and beautifully re-designed by the current owner to create a truly stunning split level maisonette fashioned to impress the very discerning of purchasers. The highly refined and exquisite finish presents itself throughout the property offering three bedrooms, a magnificent reception room, intelligent kitchen, separate utility room and secluded private garden.

#### Local Information

Pilgrim's Lane is a quiet residential street located in the heart of Hampstead village, approximately 300 metres distant from the shops, restaurants and cafes of Hampstead High Street. The green open spaces of Hampstead Heath are also a stone throw away.

For transport links Hampstead Underground Station (Northern Line) is approximately 750 metres distant and Hampstead Heath Overground Station is approximately 500 metres distant, offering services between Stratford and Richmond.

#### Tenure

Freehold

#### Local Authority

London Borough Of Camden

#### Energy Performance

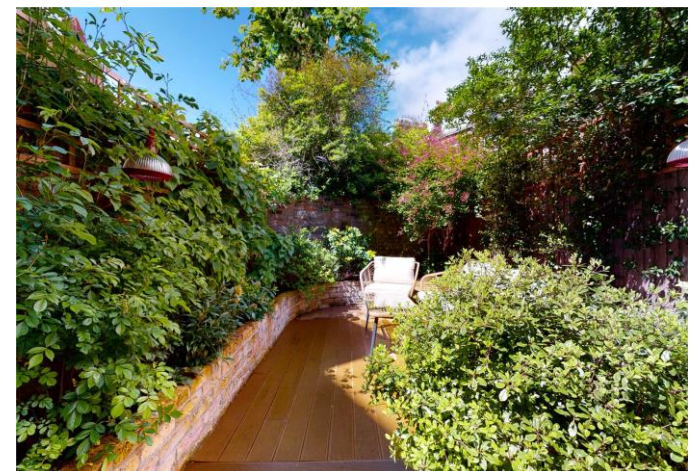
EPC Rating = D

#### Viewing

All viewings will be accompanied and are strictly by prior arrangement through Savills Hampstead Office. Telephone: +44 (0) 20 7472 5000.







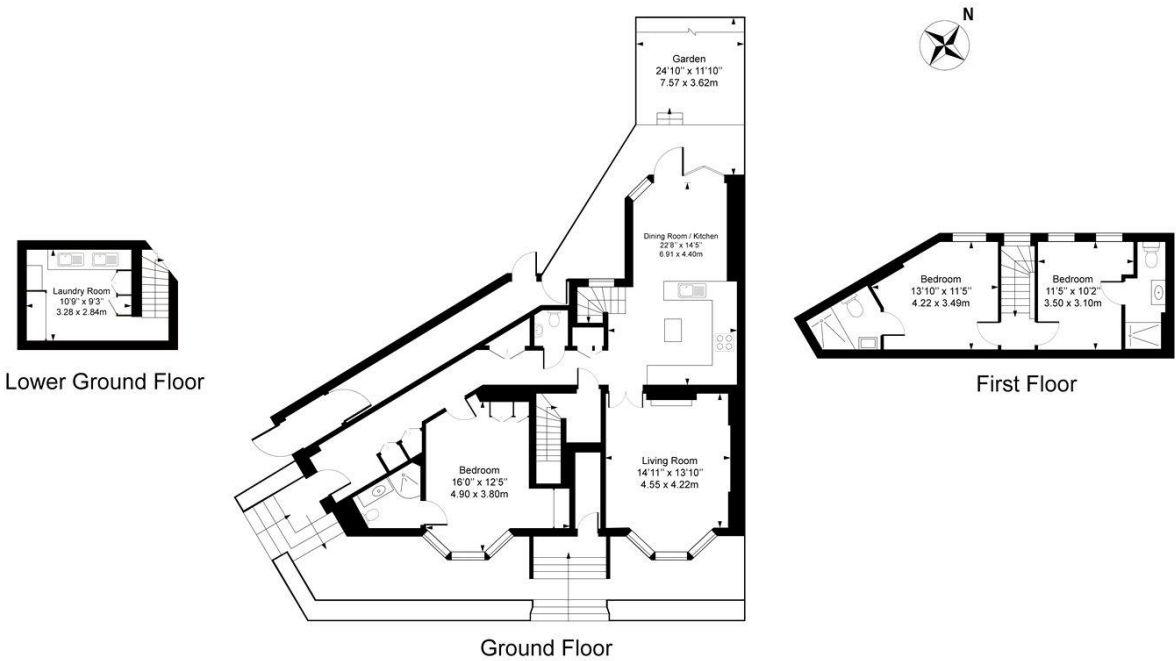
Pilgrims Lane, London, NW3  
Gross Internal Area 1744 sq ft, 162 m²

James Diaper  
Hampstead  
+44 (0) 20 7472 5000  
jdiaper@savills.com

 |  savills | savills.co.uk

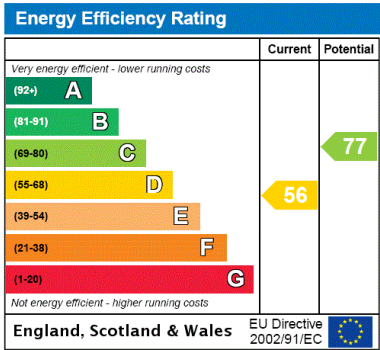
Pilgrims Lane, NW3

Approx. Gross Internal Area 1744 sq ft / 162.03 sq m



For Illustration Purposes Only - Not To Scale

This floor plan should be used as a general outline for guidance only and does not constitute in whole or in part an offer or contract. Any intending purchaser or lessee should satisfy themselves by inspection, search, enquiries and full survey as to the correctness of each statement. Any areas, measurements or distances quoted are approximate and should not be used to value a property or be the basis of any sale or let.



**Important Notice** Savills, its clients and any joint agents give notice that 1: They are not authorised to make or give any representations or warranties in relation to the property either here or elsewhere, either on their own behalf or on behalf of their client or otherwise. They assume no responsibility for any statement that may be made in these particulars. These particulars do not form part of any offer or contract and must not be relied upon as statements or representations of fact. 2: Any areas, measurements or distances are approximate. The text, photographs and plans are for guidance only and are not necessarily comprehensive. It should not be assumed that the property has all necessary planning, building regulation or other consents and Savills have not tested any services, equipment or facilities. Purchasers must satisfy themselves by inspection or otherwise. 20211110JESS

