



A two bedroom second floor flat set within an impressive gated new development of 9 luxury apartments.

Dersingham Road, London, NW2

£745,000 Leasehold (999 years)



**Incredible floor-to-ceiling windows •
Two balconies to the front • Walk-in dressing
room • 4-person lift • Bathed in natural light •
Attractive easterly aspect**

Local Information

Dersingham Road is within easy reach of West Hampstead, The Hocrfts and Cricklewood Broadway. This location is close to the famous and wide open spaces of Hampstead Heath and the Village where there are many local amenities. There is an array of eclectic local shops, bars and restaurants as well as excellent transport connections into Central London and further afield.

Cricklewood Station (Thameslink & Overland Service) is 0.5m away. Willesden Green (Jubilee Line) is 1.2m away. In addition there are numerous bus routes in and out of the Capital.

About this property

The lift-served apartments offer beautiful finishes to include kitchen units by Euromobil from Italy with integrated Bosch appliances and Caesar stone 'Verona' worktops. The bathrooms have luxury Italian vanity units with Hans Grohe mixer taps, full height Porcelain tiles and Corian wash basins. Throughout the apartment there is brushed matt grey engineered Oak flooring with underfloor heating.

Secure underground parking is available separately with electric charging points and there is a secure 18 cycle store room off the main entrance hall. Video entry phone, security cameras and alarms are standard and the development offers at 10 year Premier Warranty on completion.

This energy efficient low carbon building offers the very best in design and ingenuity with MVHR fresh air ventilation systems, low energy lighting and Air Source Heat Pumps.

Tenure

Leasehold (999 years)

Local Authority

London Borough of Barnet

Energy Performance

EPC Rating = B

Viewing

All viewings will be accompanied and are strictly by prior arrangement through Savills Hampstead Office.
Telephone: +44 (0) 20 7472 5000.





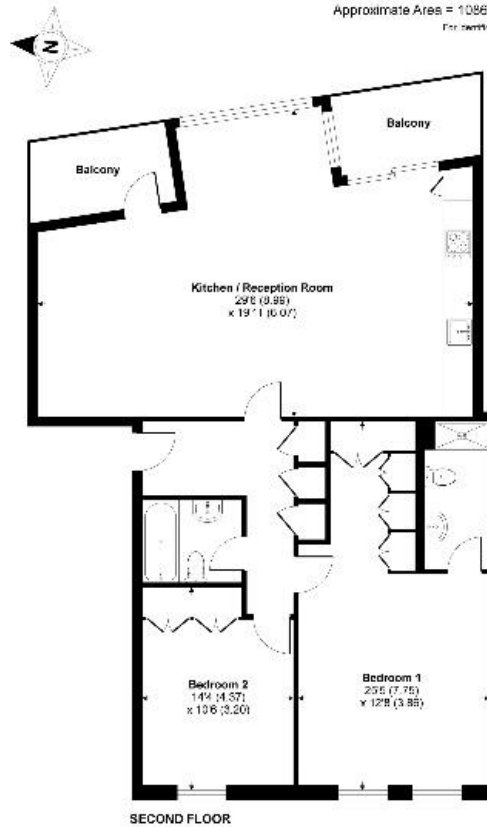
Dersingham Road, London, NW2
 Gross Internal Area 1086 sq ft, 100.9 m²

James Diaper
 Hampstead
 +44 (0) 20 7472 5000
 jdiaper@savills.com

| | savills.co.uk

Dersingham Road, Cricklewood, NW2

Approximate Area = 1086 sq ft / 101 sq m
 For verification see - Metric scale



Plans shown are based on information supplied by the seller. Measurements are approximate and should not be relied upon for legal purposes. For more information, please contact the seller. © 2021 Savills

Energy Efficiency Rating		
	Current	Potential
Very energy efficient - lower running costs		
(92+) A		
(81-91) B	86	86
(69-80) C		
(55-68) D		
(39-54) E		
(21-38) F		
(1-20) G		
Not energy efficient - higher running costs		

Important Notice Savills, its clients and any joint agents give notice that 1: They are not authorised to make or give any representations or warranties in relation to the property either here or elsewhere, either on their own behalf or on behalf of their client or otherwise. They assume no responsibility for any statement that may be made in these particulars. These particulars do not form part of any offer or contract and must not be relied upon as statements or representations of fact. 2: Any areas, measurements or distances are approximate. The text, photographs and plans are for guidance only and are not necessarily comprehensive. It should not be assumed that the property has all necessary planning, building regulation or other consents and Savills have not tested any services, equipment or facilities. Purchasers must satisfy themselves by inspection or otherwise. 20211109JESS

