



Grade II listed detached 18th century Georgian cottage

Windmill Hill, Hampstead, London, NW3

£6,995,000 Freehold

savills

Rear garden with direct access to the Heath • Guest suite with private entrance • Gym/playroom • Walled and gated front garden • Grade II listed

About this property

Capo di Monte' is an exquisite, part stucco, part weather board, Grade II listed detached 18th century Georgian cottage, nestled in this coveted location at one of the highest points in London, abutting Hampstead Heath and within walking distance of Hampstead Village.

Set back from the road behind a pristine, gated walled garden the house benefits from off-street parking and a Japanese style rear garden, whilst internally there is an abundance of original features including paneling and shutters, painstakingly restored.

The house, which has been amalgamated from two smaller properties, has been sympathetically renovated having undergone an extensive programme of works to create a stunning home for the 21st Century. Arranged over only three floors, this charming six bedroom property comprises approximately 3,762 sq.ft (350 sq. m.).

The house has a fascinating history of previous occupants over the centuries, notably the actress Sarah Siddons between 1804-1805, art historian Sir Kenneth Clarke in the late 1930's and 40's and the novelist and broadcaster Marghanita Laski from 1949-1988.

IN ACCORDANCE WITH THE ORIGINAL CONSENTED PLANNING (2014/6987/P) AN IN GOING PURCHASER COULD EXPAND THE EXISTING BASEMENT TO PROVIDE EXTENSIVE ADDITIONAL ACCOMMODATION.

Tenure
Freehold

Local Authority
London Borough Of Camden

Energy Performance
EPC Rating = Exempt

Viewing
All viewings will be accompanied and are strictly by prior arrangement through Savills Hampstead Office.
Telephone: +44 (0) 20 7472 5000.





Capo Di Monte, Windmill Hill, NW3

Gross internal area (approx.)

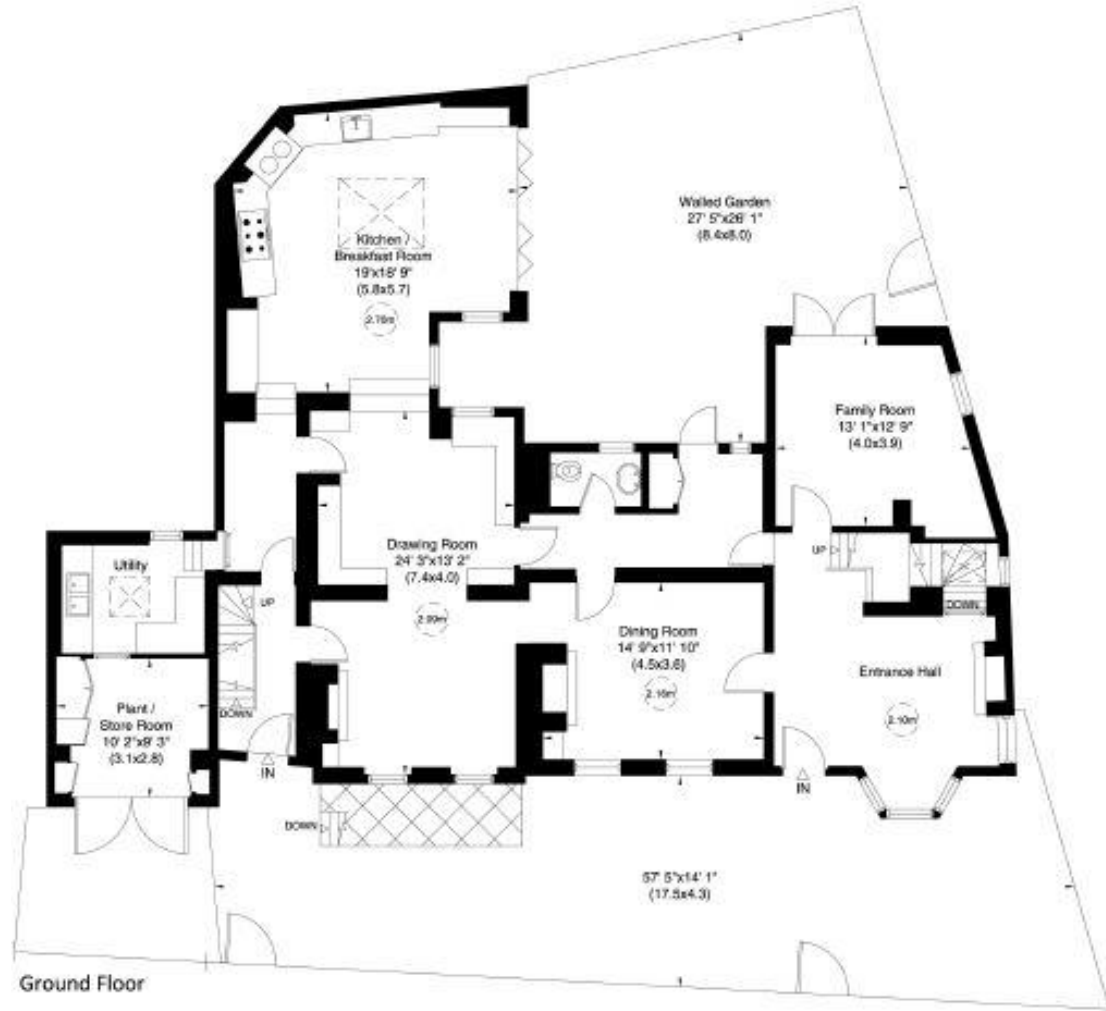
350 Sq m (3762 Sq ft)

For identification only, Not to Scale

capital.020 8671 7722



Lower Ground Floor



Ground Floor

Not to scale, for guidance only and must not be relied upon as a statement of fact. All measurements and areas are approximate only (and have been prepared in accordance with the current edition of the RICS Code of Measuring Practice).

Windmill Hill, Hampstead, London, NW3
Gross Internal Area 3762 sq ft, 349.5 m²

Peter Brookes
Hampstead
+44 (0) 20 7472 5000
pbrookes@savills.com

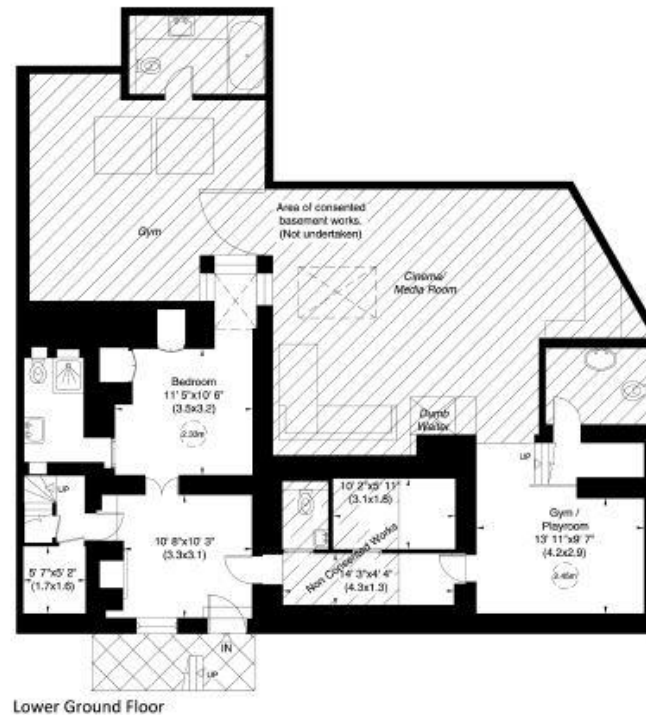


savills

savills.co.uk

Capo Di Monte, Windmill Hill, NW3

Gross internal area (approx.)
350 Sq m (3762 Sq ft)
For identification only, Not to Scale
capital.020 8671 7722



Not to scale, for guidance only and must not be relied upon as a statement of fact. All measurements and areas are approximate only (and have been prepared in accordance with the current edition of the RICS Code of Measuring Practice).

Important Notice Savills, its clients and any joint agents give notice that 1: They are not authorised to make or give any representations or warranties in relation to the property either here or elsewhere, either on their own behalf or on behalf of their client or otherwise. They assume no responsibility for any statement that may be made in these particulars. These particulars do not form part of any offer or contract and must not be relied upon as statements or representations of fact. 2: Any areas, measurements or distances are approximate. The text, photographs and plans are for guidance only and are not necessarily comprehensive. It should not be assumed that the property has all necessary planning, building regulation or other consents and Savills have not tested any services, equipment or facilities. Purchasers must satisfy themselves by inspection or otherwise. 20200828JESS

