



Detached contemporary house with a large lawned garden, an integral double garage and off-street parking

Westover Hill, Hampstead, London, NW3

£4,850,000 Freehold

savills

- Secluded plot
- Gated development
- Large lawned garden
- Integral double garage
- Cinema room
- Swimming pool
- Off street parking for 2 cars

- Reception room • kitchen • dining room • study
- 5 en suite bedrooms •

Westover Hill is a private road off West Heath Road and is within 350 metres of Hampstead Heath. There is easy road access to Brent Cross Shopping Centre, the A406 North Circular Road, the A41/A1 arterial route and junction 1 of the M1 Motorway.

Set within this gated development on a secluded plot is this detached contemporary house which benefits from a large lawned garden, an integral double garage and off street parking for two cars behind gates.

Arranged over three floors and presented in excellent decorative condition throughout, the lower ground floor comprises an indoor swimming pool, sauna, media room, utility room and a shower room.

On the upper ground floor there is a fully equipped kitchen, a double reception room with double doors opening out onto the beautiful garden, a dining room, study and guest cloakroom.

Bedroom accommodation is arranged over the first floor and features a master bedroom suite complete with a private dressing room and four further en suite bedrooms. There is a large loft room of some 623 sq ft offering additional accommodation.

Tenure

Freehold

Local Authority

London Borough of Barnet

Energy Performance

EPC Rating = E

Viewing

All viewings will be accompanied and are strictly by prior arrangement through Savills Hampstead Office.

Telephone: +44 (0) 20 7472 5000.





Westover Hill, NW3

Gross internal area (approx.)

473 Sq m (5087 Sq ft) Including Under 1.5m

464 Sq m (4990 Sq ft) Excluding Under 1.5m

Loft

113 Sq m (1217 Sq ft) Including Under 1.5m

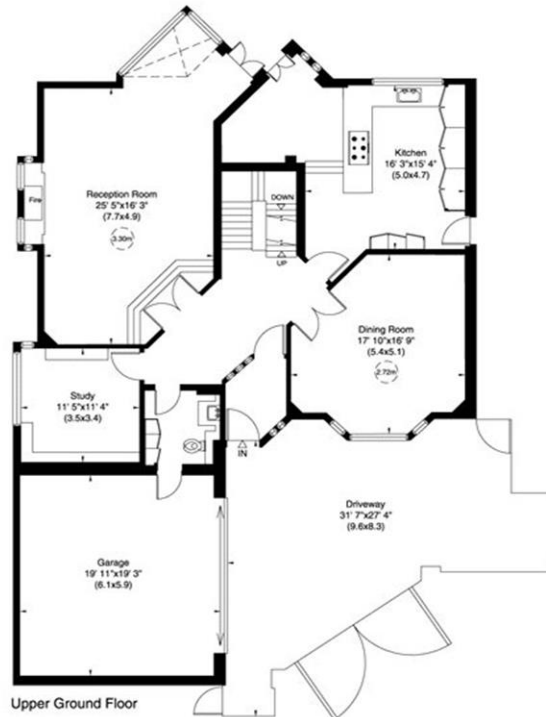
58 Sq m (623 Sq ft) Excluding Under 1.5m

For identification only. Not to Scale

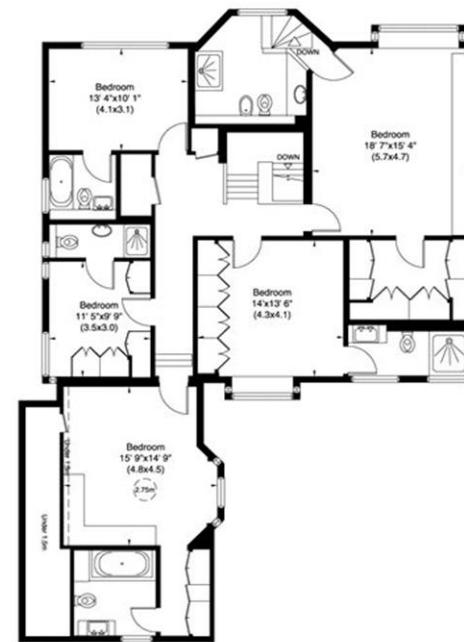
Floor Plan by **capital group** 020 8671 7722



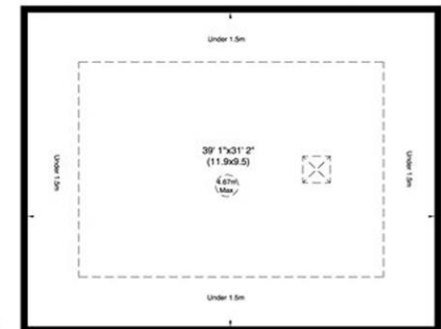
Lower Ground Floor



Upper Ground Floor



First Floor



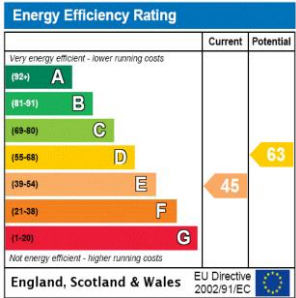
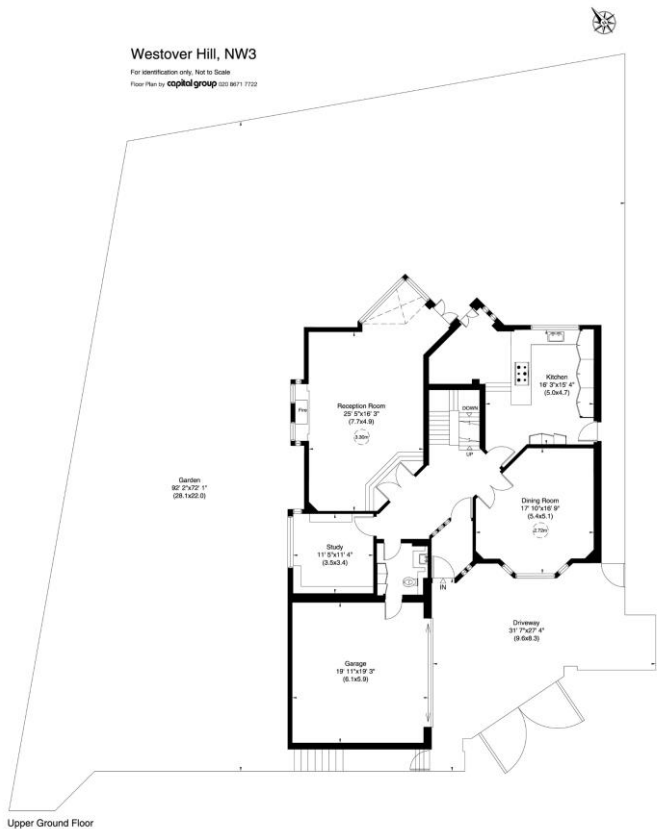
Loft



Westover Hill, Hampstead, London, NW3
Gross Internal Area 5,613 sq ft, 521.5 m²

Giles Elliott
Hampstead
+44 (0) 20 7472 5000
gelliott@savills.com

 onTheMarket.com |  savills | savills.co.uk



Important notice Savills, its clients and any joint agents give notice that 1: They are not authorised to make or give any representations or warranties in relation to the property either here or elsewhere, either on their own behalf or on behalf of their client or otherwise. They assume no responsibility for any statement that may be made in these particulars. These particulars do not form part of any offer or contract and must not be relied upon as statements or representations of fact. 2: Any areas, measurements or distances are approximate. The text, photographs and plans are for guidance only and are not necessarily comprehensive. It should not be assumed that the property has all necessary planning, building regulation or other consents and Savills have not tested any services, equipment or facilities. Purchasers must satisfy themselves by inspection or otherwise. 20200701JESS

