



A remarkable architecturally designed property

Hornsey Lane, Highgate, London, N6

£2,650,000 Freehold



A remarkable architecturally designed property • 4 bedrooms & 3 bathrooms •
Bespoke kitchen & wardrobes • Landscaped garden • BOSE system •

About this property

A remarkable architecturally designed property with unsurpassed views over central London.

Set behind its original façade the interior and gardens are unrecognisable from their previous forms. The attention to detail and product specification throughout the property is staggering and the house feels truly bespoke and by virtue, totally uncompromised.

Entrance hall, triple reception area open plan to kitchen, master suite with dressing room, bathroom and terrace, 3 further bedrooms, 2 further bathrooms, eaves storage, guest cloakroom, plant room, front and rear gardens.

Features and technology includes: Bespoke Parapan and walnut kitchen by Roundhouse featuring Miele appliances. Bespoke high gloss and walnut wardrobes by Roundhouse. Porcelain floor tiles throughout the ground floor and to all bathrooms, solid oak floorboards to staircase and engineered oak to first and second floors.

Underfloor heating throughout the ground floor and first floor bathrooms powered by a Megaflow system. Lutron Grafik Eye intelligent mood lighting to interior and garden. Bose speakers and/or wiring to all rooms, including the master en suite bathroom. CAT 5 wiring throughout and video entry system compatible with the AV system.

Local Information

Hornsey Lane is located on a quiet tree-lined residential street in Highgate. Close to several excellent schools and Highgate village, it is also well served for public transport.

Highgate tube station (0.8m) is conveniently located and there are six bus routes that are less than 0.1 mile away. Other attractions such as the lovely Waterlow Park is at the end of the street on Highgate Hill, with Highgate Woods a short distance away.

Tenure

Freehold

Local Authority

London Borough Of Haringey

Energy Performance

EPC Rating = C

Viewing

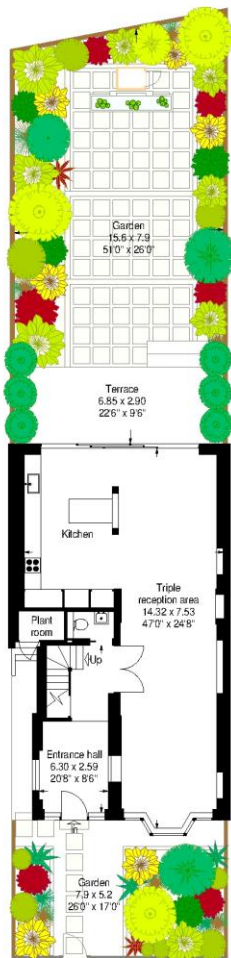
All viewings will be accompanied and are strictly by prior arrangement through Savills Hampstead Office.
Telephone: +44 (0) 20 7472 5000.



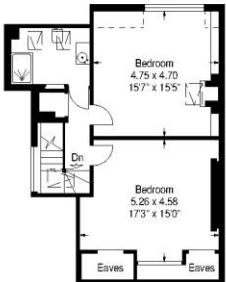


Hornsey Lane, Highgate, London, N6
Gross Internal Area 2558 sq ft, 237.6 m²

James Diaper
Hampstead
+44 (0) 20 7472 5000
jdiaper@savills.com




Hornsey Lane, London N6
For identification purposes only. Not to scale.
Propplan Ltd. ©



Second floor



First floor

Energy Efficiency Rating		
	Current	Potential
Very energy efficient - lower running costs		
(92+) A		
(81-91) B		
(69-80) C		
(55-68) D		
(39-54) E		
(21-38) F		
(1-20) G		
Not energy efficient - higher running costs		
England, Scotland & Wales	EU Directive 2002/91/EC	

Important Notice Savills, its clients and any joint agents give notice that 1: They are not authorised to make or give any representations or warranties in relation to the property either here or elsewhere, either on their own behalf or on behalf of their client or otherwise. They assume no responsibility for any statement that may be made in these particulars. These particulars do not form part of any offer or contract and must not be relied upon as statements or representations of fact. 2: Any areas, measurements or distances are approximate. The text, photographs and plans are for guidance only and are not necessarily comprehensive. It should not be assumed that the property has all necessary planning, building regulation or other consents and Savills have not tested any services, equipment or facilities. Purchasers must satisfy themselves by inspection or otherwise. 20200826AYPT

