



An elegant Grade II listed period family house on the market for the first time since 1965.

Provost Road, Belsize Park, London, NW3

£3,000,000 Freehold

savills

**Elegant period house • Grade II listed •
Wonderful array of period features • In need of
refurbishment • Mature South-facing garden**

About this property

A Grade II listed period family house on the market for the first time since 1965. The house dates from circa 1844 in an 'Italianate villa' style with the internal accommodation over four floors and a mature south facing garden.

Hall, double drawing room, dining room, kitchen, principal bedroom, 3 further bedrooms, 2 bathrooms, office, South-facing garden.

Local Information

Provost Road is located within easy reach of Belsize Park, Chalk Farm and Primrose Hill. Transport Links include: Northern Line (Chalk Farm) approx 0.2 miles. Jubilee Line (Swiss Cottage) approx 0.8 miles. London Overground (Kentish Town West) approx 0.6 miles.

Tenure

Freehold

Local Authority

London Borough Of Camden

Energy Performance

EPC Rating = E

Viewing

All viewings will be accompanied and are strictly by prior arrangement through Savills Hampstead Office. Telephone: +44 (0) 20 7472 5000.



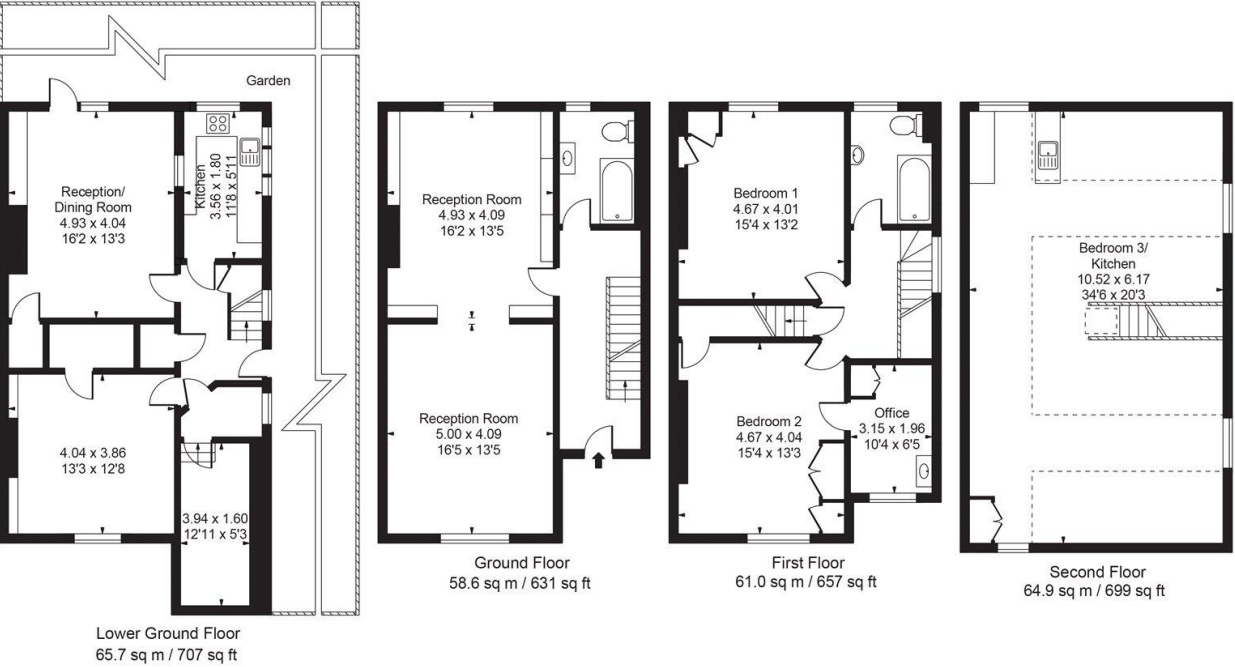



Provost Road, Belsize Park, London, NW3
Gross Internal Area 2304 sq ft, 214.04 m²

Peter Brookes
Hampstead
+44 (0) 20 7472 5000
pbrookes@savills.com

 |  savills | savills.co.uk

Provost Road
Gross Internal Area(Approx)
Total = 214.04 Sq m / 2304 Sq ft (Excluding Restricted Height Area)
For Illustration Purposes Only - Not To Scale
Floorplan by Humble Spy Photography Ltd.



Energy Efficiency Rating		
	Current	Potential
Very energy efficient - lower running costs		
(92+) A		
(81-91) B		
(69-80) C		
(55-68) D		
(39-54) E	53	80
(21-38) F		
(1-20) G		
Not energy efficient - higher running costs		
England, Scotland & Wales	EU Directive 2002/91/EC 	

Important Notice Savills, its clients and any joint agents give notice that 1: They are not authorised to make or give any representations or warranties in relation to the property either here or elsewhere, either on their own behalf or on behalf of their client or otherwise. They assume no responsibility for any statement that may be made in these particulars. These particulars do not form part of any offer or contract and must not be relied upon as statements or representations of fact. 2: Any areas, measurements or distances are approximate. The text, photographs and plans are for guidance only and are not necessarily comprehensive. It should not be assumed that the property has all necessary planning, building regulation or other consents and Savills have not tested any services, equipment or facilities. Purchasers must satisfy themselves by inspection or otherwise. 20201124AYPT

